

4

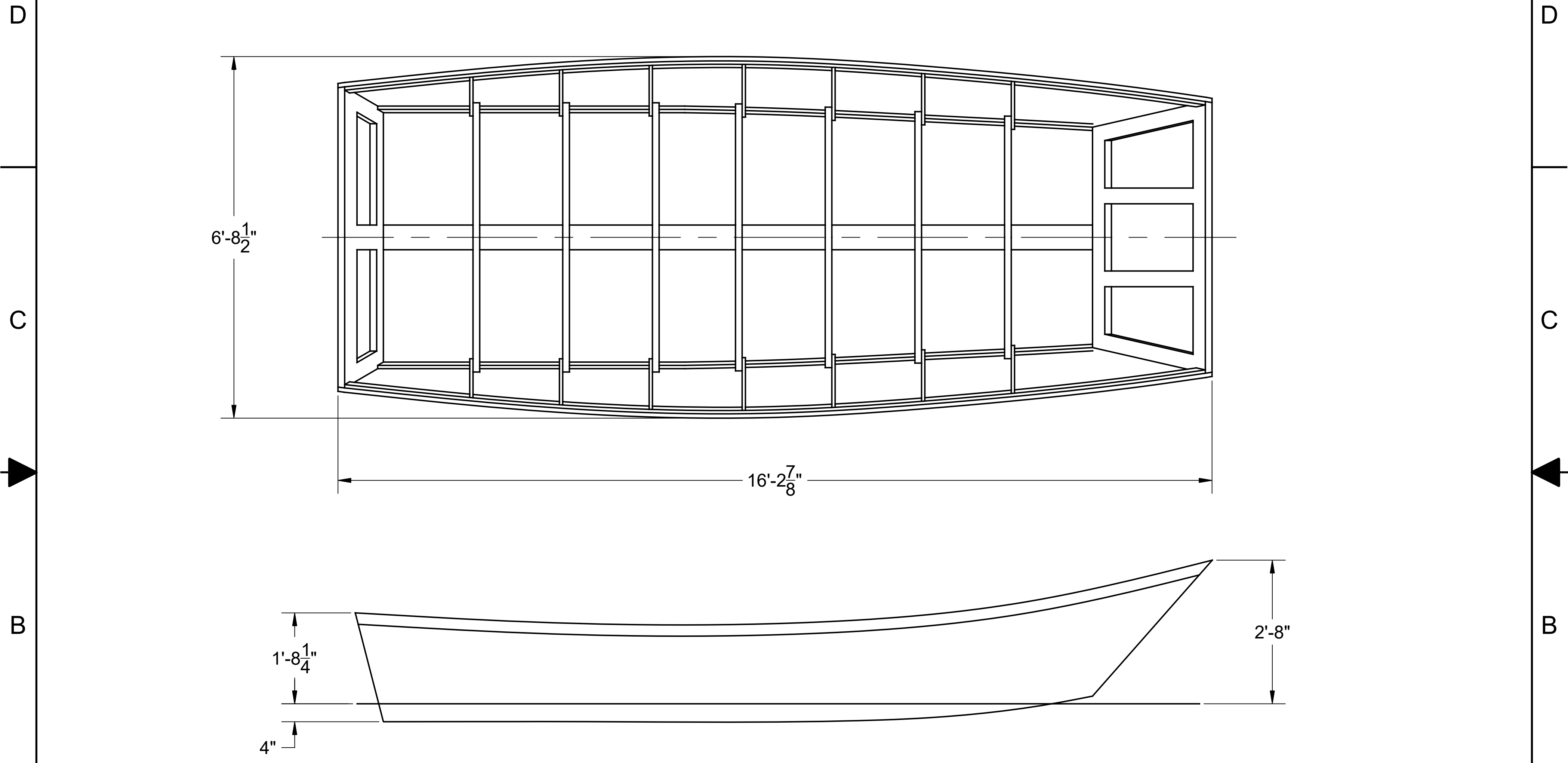
3

2


1

NOTICE
 THIS DRAWING CONTAINS A PROPRIETARY DESIGN ASSIGNED TO SPIRA INTERNATIONAL, INC. ALL RIGHTS TO DUPLICATE, TRANSFER OR USE ARE EXPRESSLY RESERVED BY SPIRA INTERNATIONAL. THE BUYER IS LICENSED TO BUILD ONE ASSEMBLY FROM THESE PLANS.

REVISIONS				
ZONE	LTR	DESCRIPTION	DATE	APPROVED



SPECIFICATIONS	
MAX. DISPLACEMENT	2700 LBS
HULL WEIGHT	725 LBS
MAX. HP (REMOTE STEER)	75 HP
RECOMMENDED HP	30 HP

 **Spira International, Inc.**
 Huntington Beach, California

16' WYE RIVER GARVEY

DRAWN BY: J. SPIRA	DATE: 11/26/12	DRAWING NO. WYER01
SCALE 3/4" = 1' & NOTED		SHEET OF

4

3

2

1

A

A

B

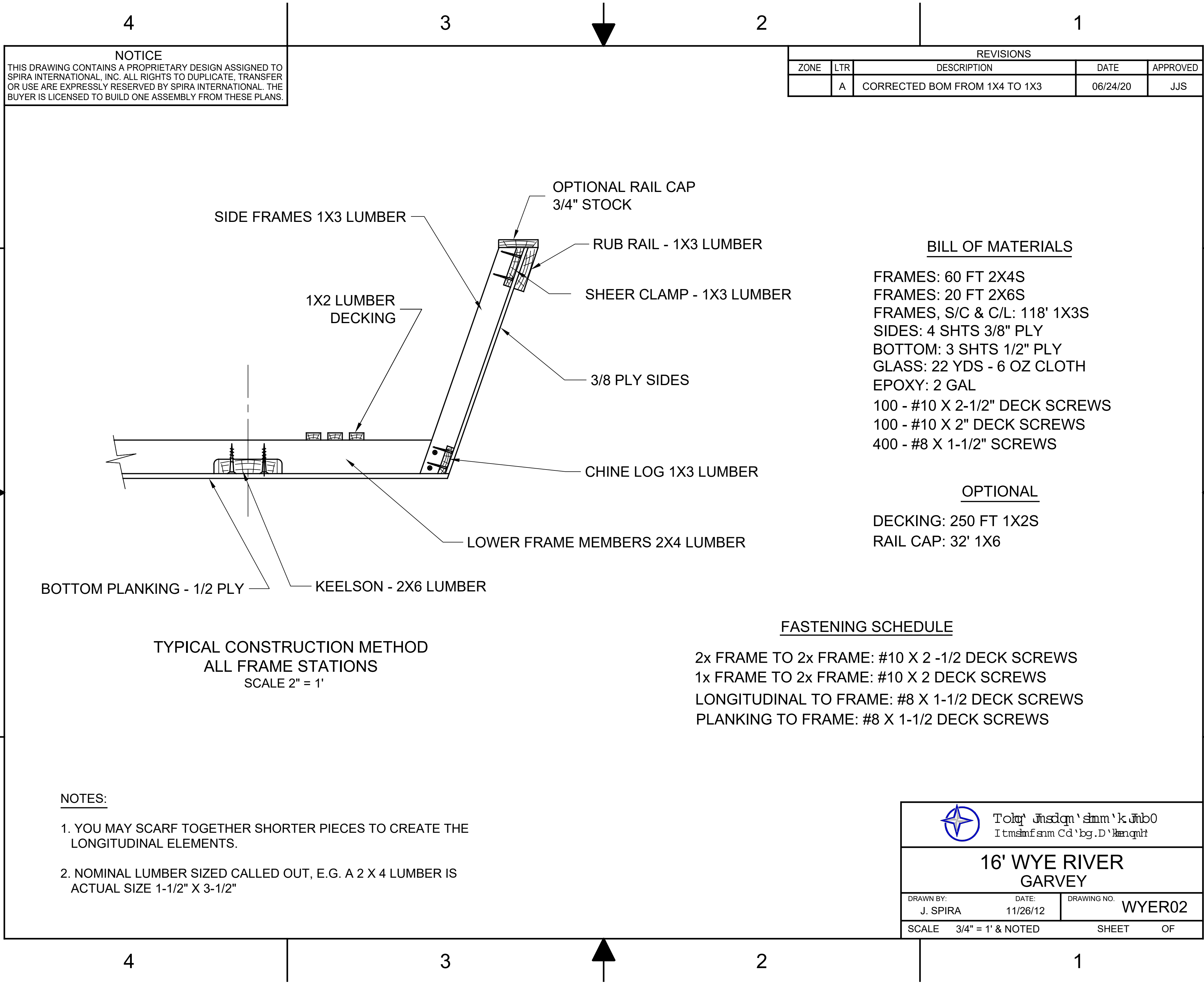
B

C

C

D

D



NOTICE
 THIS DRAWING CONTAINS A PROPRIETARY DESIGN ASSIGNED TO SPIRA INTERNATIONAL, INC. ALL RIGHTS TO DUPLICATE, TRANSFER OR USE ARE EXPRESSLY RESERVED BY SPIRA INTERNATIONAL. THE BUYER IS LICENSED TO BUILD ONE ASSEMBLY FROM THESE PLANS.

REVISIONS				
ZONE	LTR	DESCRIPTION	DATE	APPROVED
	A	CORRECTED BOM FROM 1X4 TO 1X3	06/24/20	JJS

BILL OF MATERIALS

- FRAMES: 60 FT 2X4S
- FRAMES: 20 FT 2X6S
- FRAMES, S/C & C/L: 118' 1X3S
- SIDES: 4 SHTS 3/8" PLY
- BOTTOM: 3 SHTS 1/2" PLY
- GLASS: 22 YDS - 6 OZ CLOTH
- EPOXY: 2 GAL
- 100 - #10 X 2-1/2" DECK SCREWS
- 100 - #10 X 2" DECK SCREWS
- 400 - #8 X 1-1/2" SCREWS

OPTIONAL

- DECKING: 250 FT 1X2S
- RAIL CAP: 32' 1X6


FASTENING SCHEDULE

- 2x FRAME TO 2x FRAME: #10 X 2 -1/2 DECK SCREWS
- 1x FRAME TO 2x FRAME: #10 X 2 DECK SCREWS
- LONGITUDINAL TO FRAME: #8 X 1-1/2 DECK SCREWS
- PLANKING TO FRAME: #8 X 1-1/2 DECK SCREWS

TYPICAL CONSTRUCTION METHOD
ALL FRAME STATIONS
 SCALE 2" = 1'

NOTES:

1. YOU MAY SCARF TOGETHER SHORTER PIECES TO CREATE THE LONGITUDINAL ELEMENTS.
2. NOMINAL LUMBER SIZED CALLED OUT, E.G. A 2 X 4 LUMBER IS ACTUAL SIZE 1-1/2" X 3-1/2"

 Spira International I t m s n f s n m C d ' b g . D ' k a n q n h		
16' WYE RIVER GARVEY		
DRAWN BY: J. SPIRA	DATE: 11/26/12	DRAWING NO. WYER02
SCALE 3/4" = 1' & NOTED		SHEET OF