

4

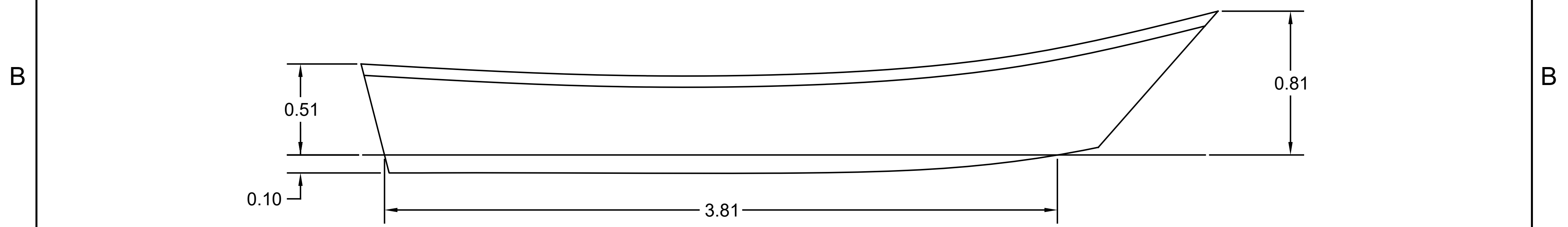
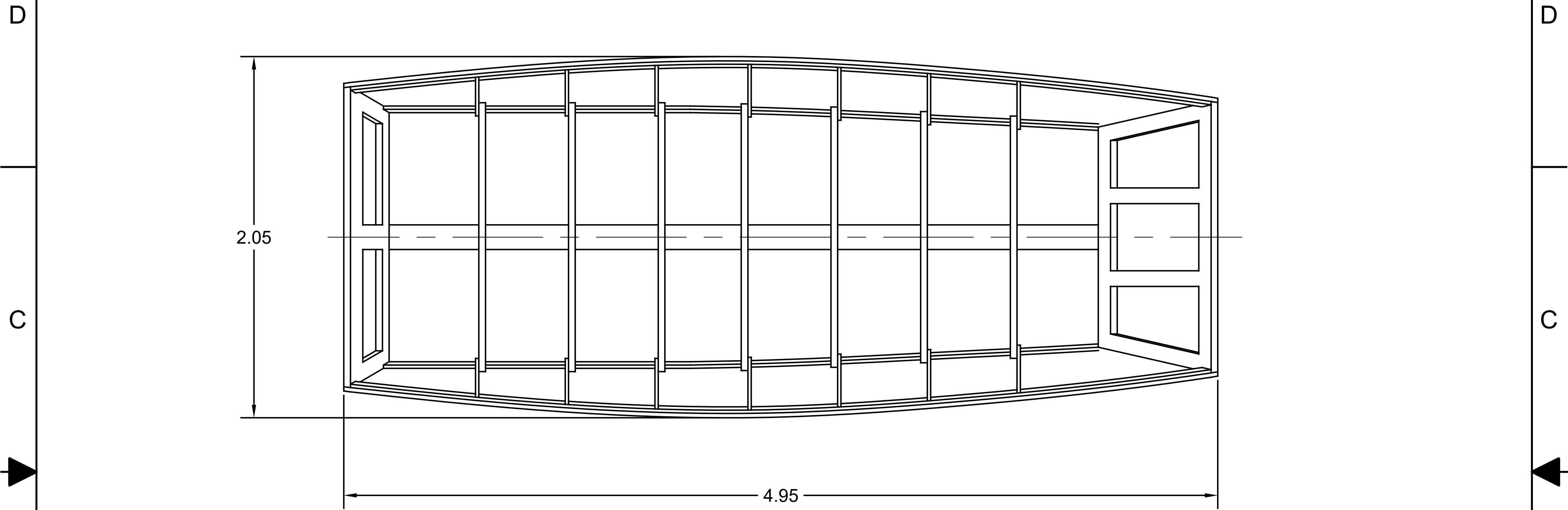
3

2


1

**NOTICE**  
 THIS DRAWING CONTAINS A PROPRIETARY DESIGN ASSIGNED TO SPIRA INTERNATIONAL, INC. ALL RIGHTS TO DUPLICATE, TRANSFER OR USE ARE EXPRESSLY RESERVED BY SPIRA INTERNATIONAL. THE BUYER IS LICENSED TO BUILD ONE ASSEMBLY FROM THESE PLANS.

REVISIONS				
ZONE	LTR	DESCRIPTION	DATE	APPROVED



SPECIFICATIONS	
MAX. DISPLACEMENT	1230 KG
HULL WEIGHT	330 KG
MAX. HP (REMOTE STEER)	75 HP
RECOMMENDED HP	30 HP

 <b>Spira International, Inc.</b> Huntington Beach, California		
<b>5.0M WYE RIVER GARVEY</b>		
DRAWN BY: J. SPIRA	DATE: 10/19/14	DRAWING NO. WYERM01
SCALE	1/16 & NOTED	SHEET OF

4

3

2

1

A

A

B

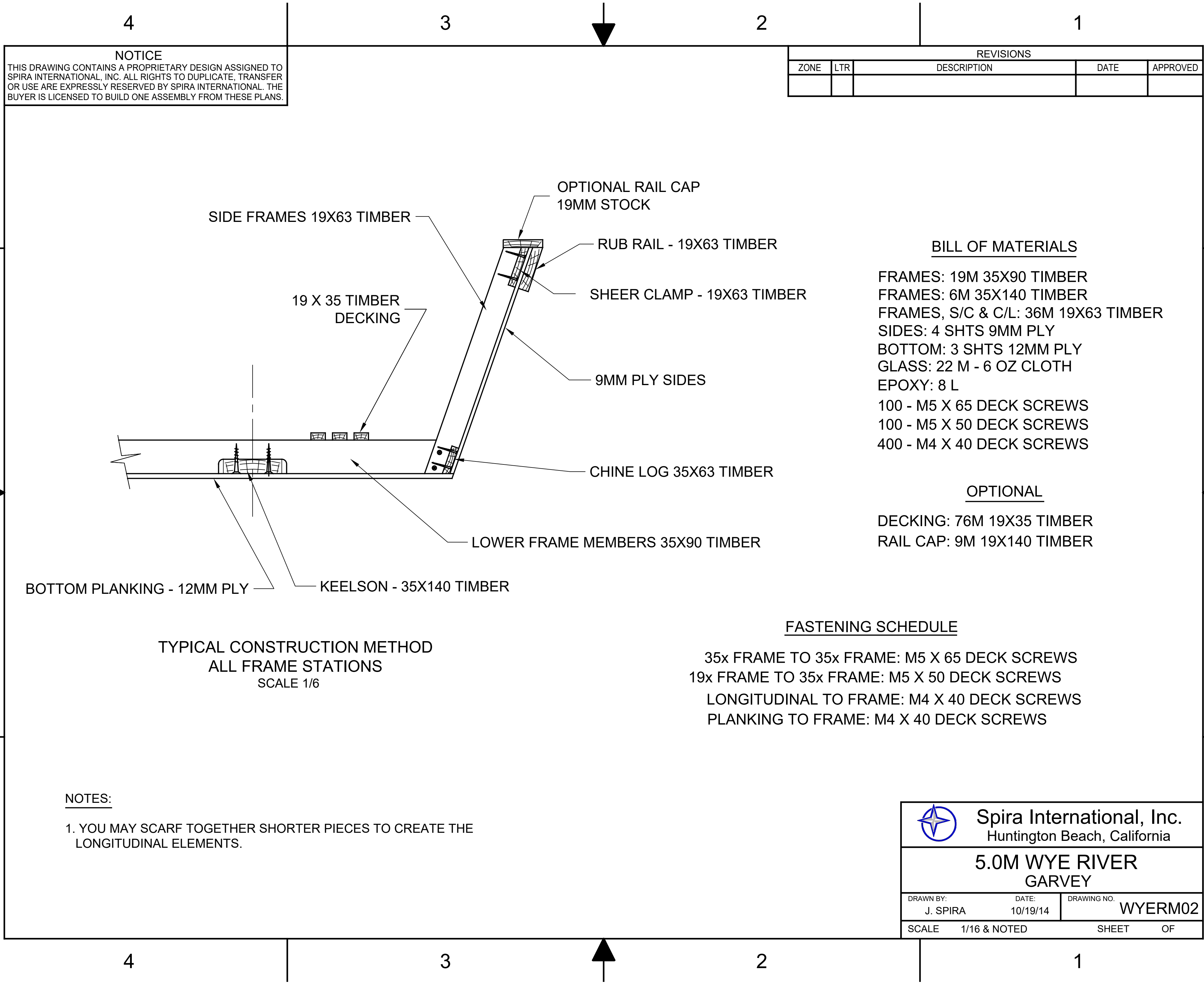
B

C

C

D

D



**NOTICE**  
 THIS DRAWING CONTAINS A PROPRIETARY DESIGN ASSIGNED TO SPIRA INTERNATIONAL, INC. ALL RIGHTS TO DUPLICATE, TRANSFER OR USE ARE EXPRESSLY RESERVED BY SPIRA INTERNATIONAL. THE BUYER IS LICENSED TO BUILD ONE ASSEMBLY FROM THESE PLANS.

REVISIONS				
ZONE	LTR	DESCRIPTION	DATE	APPROVED

**BILL OF MATERIALS**

- FRAMES: 19M 35X90 TIMBER
- FRAMES: 6M 35X140 TIMBER
- FRAMES, S/C & C/L: 36M 19X63 TIMBER
- SIDES: 4 SHTS 9MM PLY
- BOTTOM: 3 SHTS 12MM PLY
- GLASS: 22 M - 6 OZ CLOTH
- EPOXY: 8 L
- 100 - M5 X 65 DECK SCREWS
- 100 - M5 X 50 DECK SCREWS
- 400 - M4 X 40 DECK SCREWS

**OPTIONAL**

- DECKING: 76M 19X35 TIMBER
- RAIL CAP: 9M 19X140 TIMBER


**FASTENING SCHEDULE**

- 35x FRAME TO 35x FRAME: M5 X 65 DECK SCREWS
- 19x FRAME TO 35x FRAME: M5 X 50 DECK SCREWS
- LONGITUDINAL TO FRAME: M4 X 40 DECK SCREWS
- PLANKING TO FRAME: M4 X 40 DECK SCREWS

**TYPICAL CONSTRUCTION METHOD**  
**ALL FRAME STATIONS**  
 SCALE 1/6

**NOTES:**

1. YOU MAY SCARF TOGETHER SHORTER PIECES TO CREATE THE LONGITUDINAL ELEMENTS.

 <b>Spira International, Inc.</b> Huntington Beach, California		
<b>5.0M WYE RIVER</b> <b>GARVEY</b>		
DRAWN BY:	DATE:	DRAWING NO.
J. SPIRA	10/19/14	WYERM02
SCALE	1/16 & NOTED	SHEET OF