

4

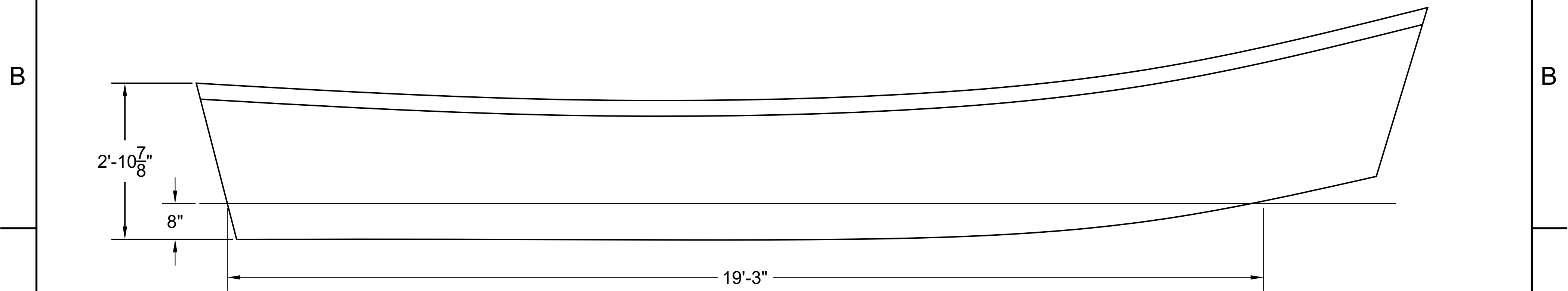
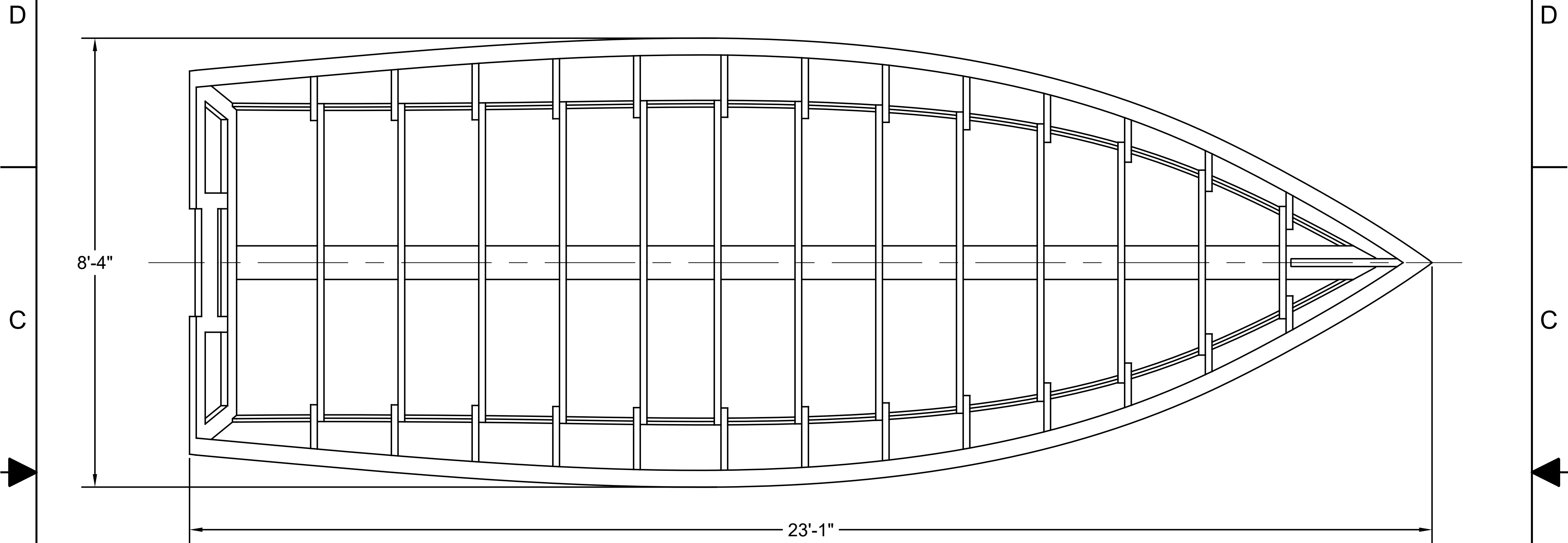
3

2


1

NOTICE
 THIS DRAWING CONTAINS A PROPRIETARY DESIGN ASSIGNED TO SPIRA INTERNATIONAL, INC. ALL RIGHTS TO DUPLICATE, TRANSFER OR USE ARE EXPRESSLY RESERVED BY SPIRA INTERNATIONAL. THE BUYER IS LICENSED TO BUILD ONE ASSEMBLY FROM THESE PLANS.

| ZONE | | REVISIONS | | |
|------|-----|---------------------------|----------|----------|
| ZONE | LTR | DESCRIPTION | DATE | APPROVED |
| | A | ADDED SPECIFICATION TABLE | 06/29/16 | JJS |



| SPECIFICATIONS | |
|----------------------|----------|
| MAX. DISPLACEMENT | 5900 LBS |
| HULL WEIGHT | 1300 LBS |
| MAX. HP - 20" REMOTE | 200 HP |
| RECOMMENDED HP | 75 HP |

 **Spira International, Inc.**
 Huntington Beach, California

WINCHESTER
 23' PACIFIC POWER DORY

| | | |
|-----------------------|-------------------|-----------------------|
| DRAWN BY: J. SPIRA | DATE: 04/01/10 | DRAWING NO. WINC01 |
|-----------------------|-------------------|-----------------------|

SCALE 3/4" = 1' SHEET OF

4

3

2

1

4

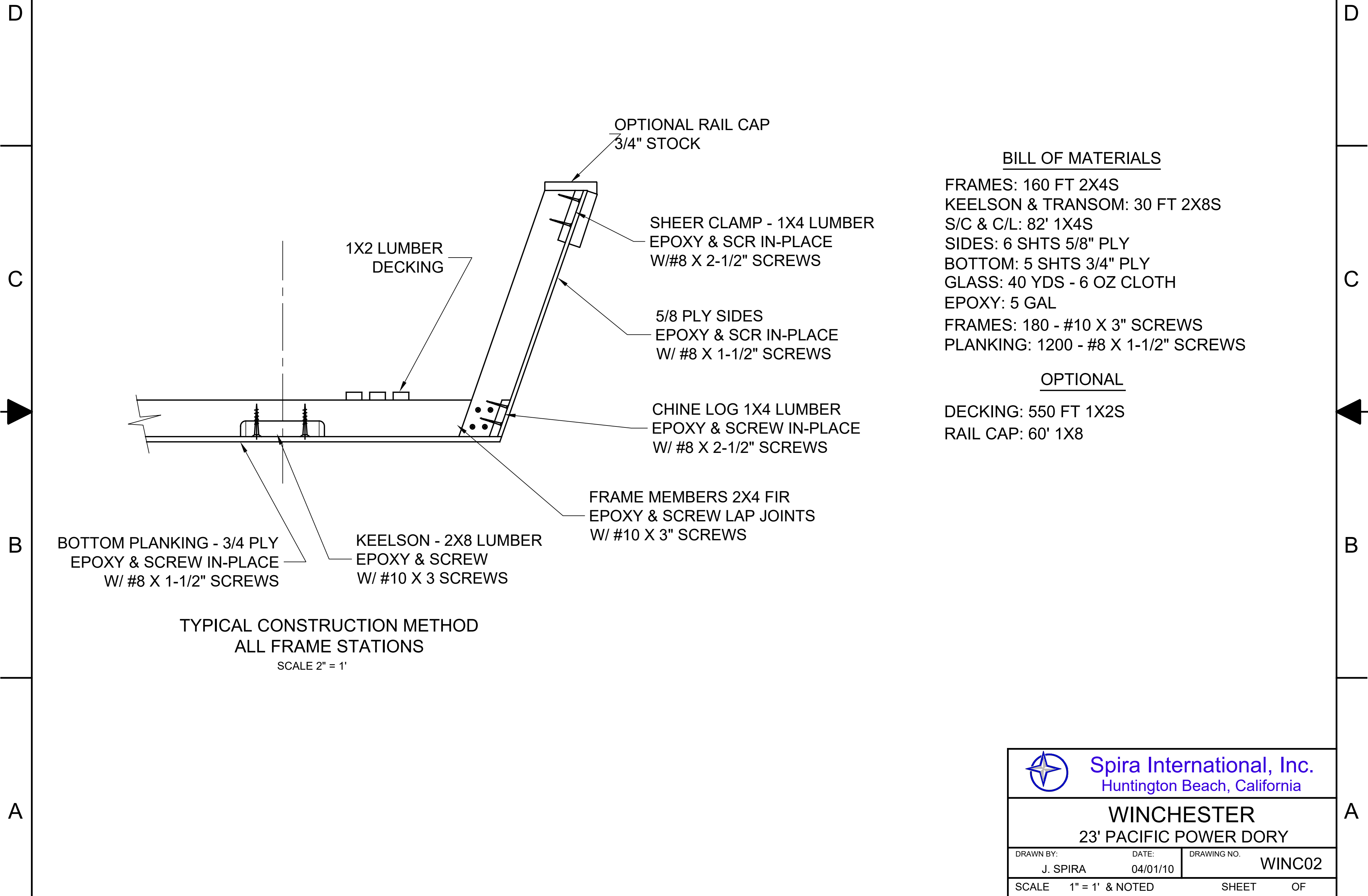
3

2

1

NOTICE
 THIS DRAWING CONTAINS A PROPRIETARY DESIGN ASSIGNED TO SPIRA INTERNATIONAL, INC. ALL RIGHTS TO DUPLICATE, TRANSFER OR USE ARE EXPRESSLY RESERVED BY SPIRA INTERNATIONAL. THE BUYER IS LICENSED TO BUILD ONE ASSEMBLY FROM THESE PLANS.

| REVISIONS | | | | |
|-----------|-----|----------------------------|----------|----------|
| ZONE | LTR | DESCRIPTION | DATE | APPROVED |
| | A | CORRECTED BOM - BOTTOM PLY | 03/31/10 | JJS |




BILL OF MATERIALS

- FRAMES: 160 FT 2X4S
- KEELSON & TRANSOM: 30 FT 2X8S
- S/C & C/L: 82' 1X4S
- SIDES: 6 SHTS 5/8" PLY
- BOTTOM: 5 SHTS 3/4" PLY
- GLASS: 40 YDS - 6 OZ CLOTH
- EPOXY: 5 GAL
- FRAMES: 180 - #10 X 3" SCREWS
- PLANKING: 1200 - #8 X 1-1/2" SCREWS

OPTIONAL

- DECKING: 550 FT 1X2S
- RAIL CAP: 60' 1X8

| | | |
|--|-------------------|-----------------------|
|  Spira International, Inc. Huntington Beach, California | | |
| WINCHESTER 23' PACIFIC POWER DORY | | |
| DRAWN BY: J. SPIRA | DATE: 04/01/10 | DRAWING NO. WINC02 |
| SCALE 1" = 1' & NOTED | | SHEET OF |

4

3

2

1