

4

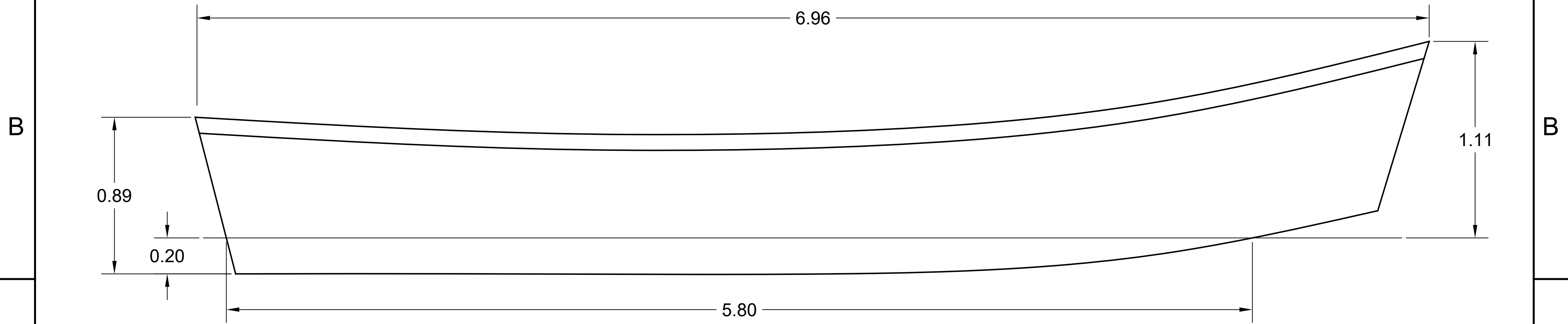
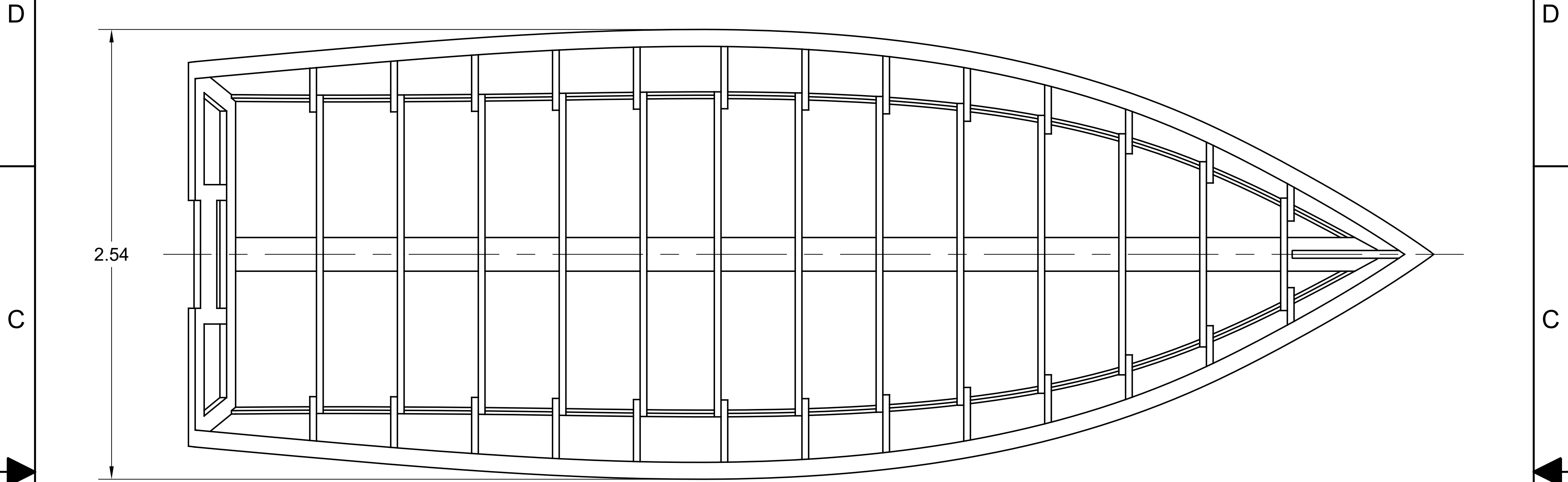
3

2


1

NOTICE
 THIS DRAWING CONTAINS A PROPRIETARY DESIGN ASSIGNED TO SPIRA INTERNATIONAL, INC. ALL RIGHTS TO DUPLICATE, TRANSFER OR USE ARE EXPRESSLY RESERVED BY SPIRA INTERNATIONAL. THE BUYER IS LICENSED TO BUILD ONE ASSEMBLY FROM THESE PLANS.

| REVISIONS | | | | |
|-----------|-----|------------------------|----------|----------|
| ZONE | LTR | DESCRIPTION | DATE | APPROVED |
| | A | ADDED SPEC SHEET & LWL | 04/09/21 | JJS |



| SPECIFICATIONS | |
|----------------------|-----------------|
| MAX. DISPLACEMENT | 2680 KG |
| HULL WEIGHT | 590 KG |
| MAX. HP - 20" REMOTE | 150 KW (200 HP) |
| RECOMMENDED HP | 56 KW (75 HP) |

 **Spira International, Inc.**
 Huntington Beach, California

WINCHESTER
 7M PACIFIC POWER DORY

| | | |
|-----------------------|-------------------|------------------------|
| DRAWN BY: J. SPIRA | DATE: 08/16/10 | DRAWING NO. WINCM01 |
| SCALE 1/16 | SHEET OF | |

4

3

2

1

4

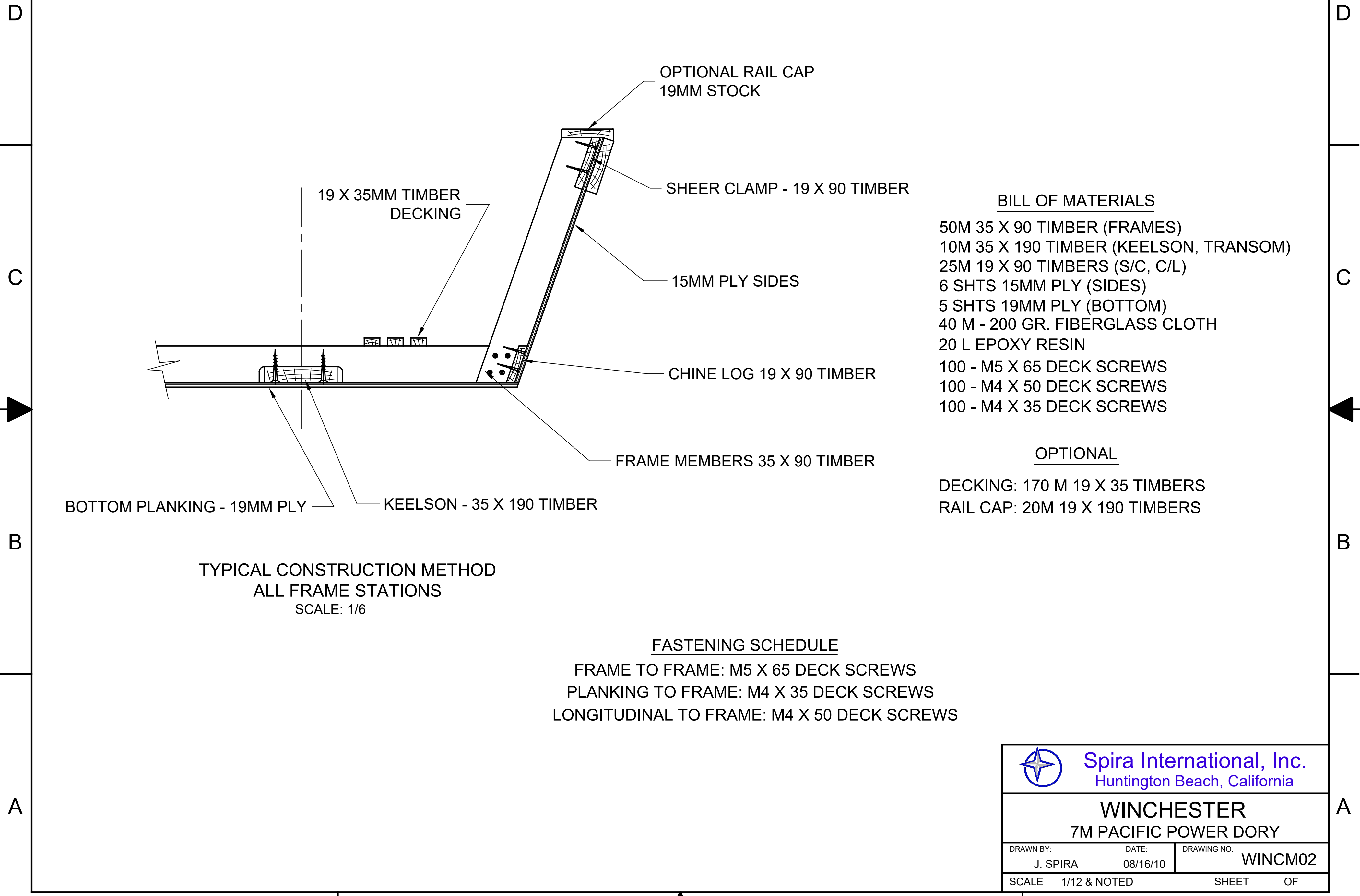
3

2

1


NOTICE
 THIS DRAWING CONTAINS A PROPRIETARY DESIGN ASSIGNED TO SPIRA INTERNATIONAL, INC. ALL RIGHTS TO DUPLICATE, TRANSFER OR USE ARE EXPRESSLY RESERVED BY SPIRA INTERNATIONAL. THE BUYER IS LICENSED TO BUILD ONE ASSEMBLY FROM THESE PLANS.

| REVISIONS | | | | |
|-----------|-----|---------------------------|----------|----------|
| ZONE | LTR | DESCRIPTION | DATE | APPROVED |
| | C | UPDATED BOM AND FASTENERS | 04/10/21 | JJS |



- BILL OF MATERIALS**
- 50M 35 X 90 TIMBER (FRAMES)
 - 10M 35 X 190 TIMBER (KEELSON, TRANSOM)
 - 25M 19 X 90 TIMBERS (S/C, C/L)
 - 6 SHTS 15MM PLY (SIDES)
 - 5 SHTS 19MM PLY (BOTTOM)
 - 40 M - 200 GR. FIBERGLASS CLOTH
 - 20 L EPOXY RESIN
 - 100 - M5 X 65 DECK SCREWS
 - 100 - M4 X 50 DECK SCREWS
 - 100 - M4 X 35 DECK SCREWS

- OPTIONAL**
- DECKING: 170 M 19 X 35 TIMBERS
 - RAIL CAP: 20M 19 X 190 TIMBERS

 **Spira International, Inc.**
 Huntington Beach, California

WINCHESTER
 7M PACIFIC POWER DORY

| | | |
|-----------------------|-------------------|------------------------|
| DRAWN BY: J. SPIRA | DATE: 08/16/10 | DRAWING NO. WINCM02 |
| SCALE 1/12 & NOTED | | SHEET OF |