

4

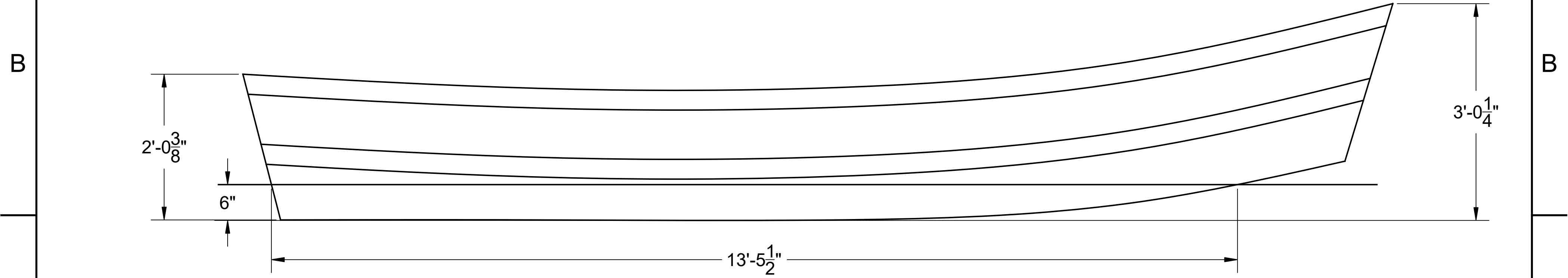
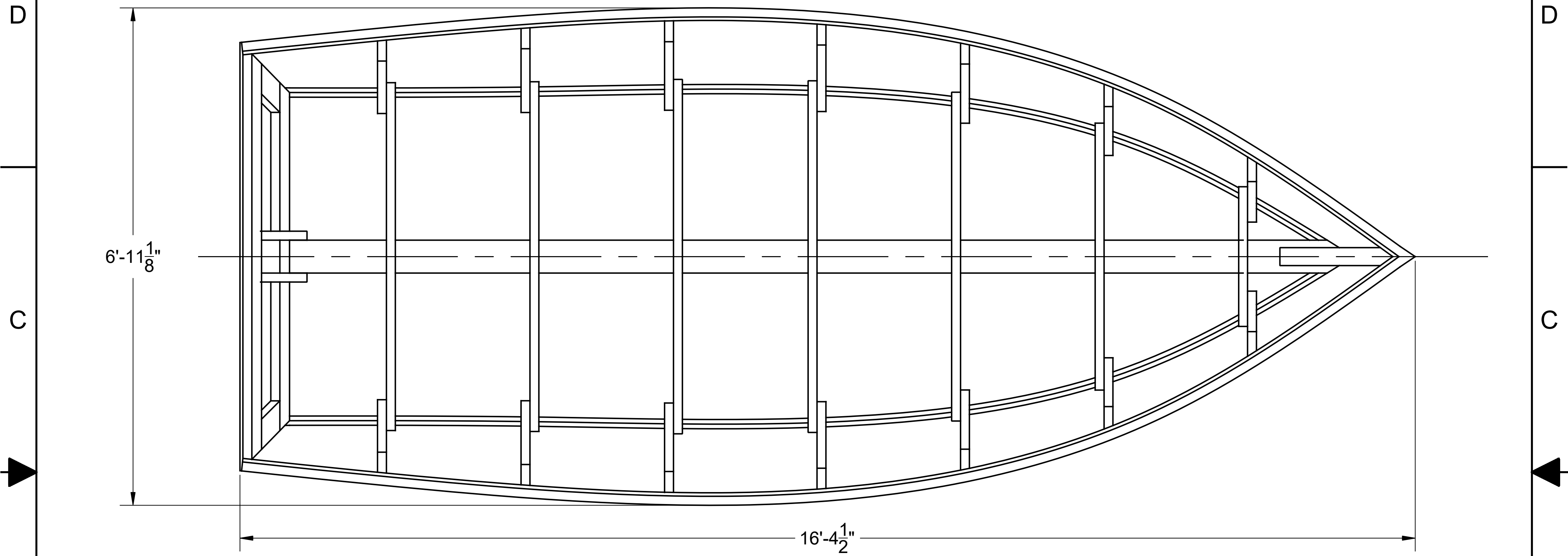
3

2


1

**NOTICE**  
 THIS DRAWING CONTAINS A PROPRIETARY DESIGN ASSIGNED TO SPIRA INTERNATIONAL, INC. ALL RIGHTS TO DUPLICATE, TRANSFER OR USE ARE EXPRESSLY RESERVED BY SPIRA INTERNATIONAL. THE BUYER IS LICENSED TO BUILD ONE ASSEMBLY FROM THESE PLANS.

REVISIONS				
ZONE	LTR	DESCRIPTION	DATE	APPROVED
	C	ADDED WATERLINE LENGTH & MAX DRAFT	11/14/15	JJS



SPECIFICATIONS	
MAX. DISPLACEMENT	2450 LBS
HULL WEIGHT	810 LBS
HP <sub>MAX</sub> (20" O/B, REMOTE)	90 HP
HP <sub>MAX</sub> (15" O/B, TILLER)	30 HP

 **Spira International, Inc.**  
 Huntington Beach, California

**TILLAMOOK**  
 16' PACIFIC POWER DORY

DRAWN BY: J. SPIRA	DATE: 09/28/07	DRAWING NO. TILL01
SCALE 1" = 1'		SHEET OF

4

3

2

1

4

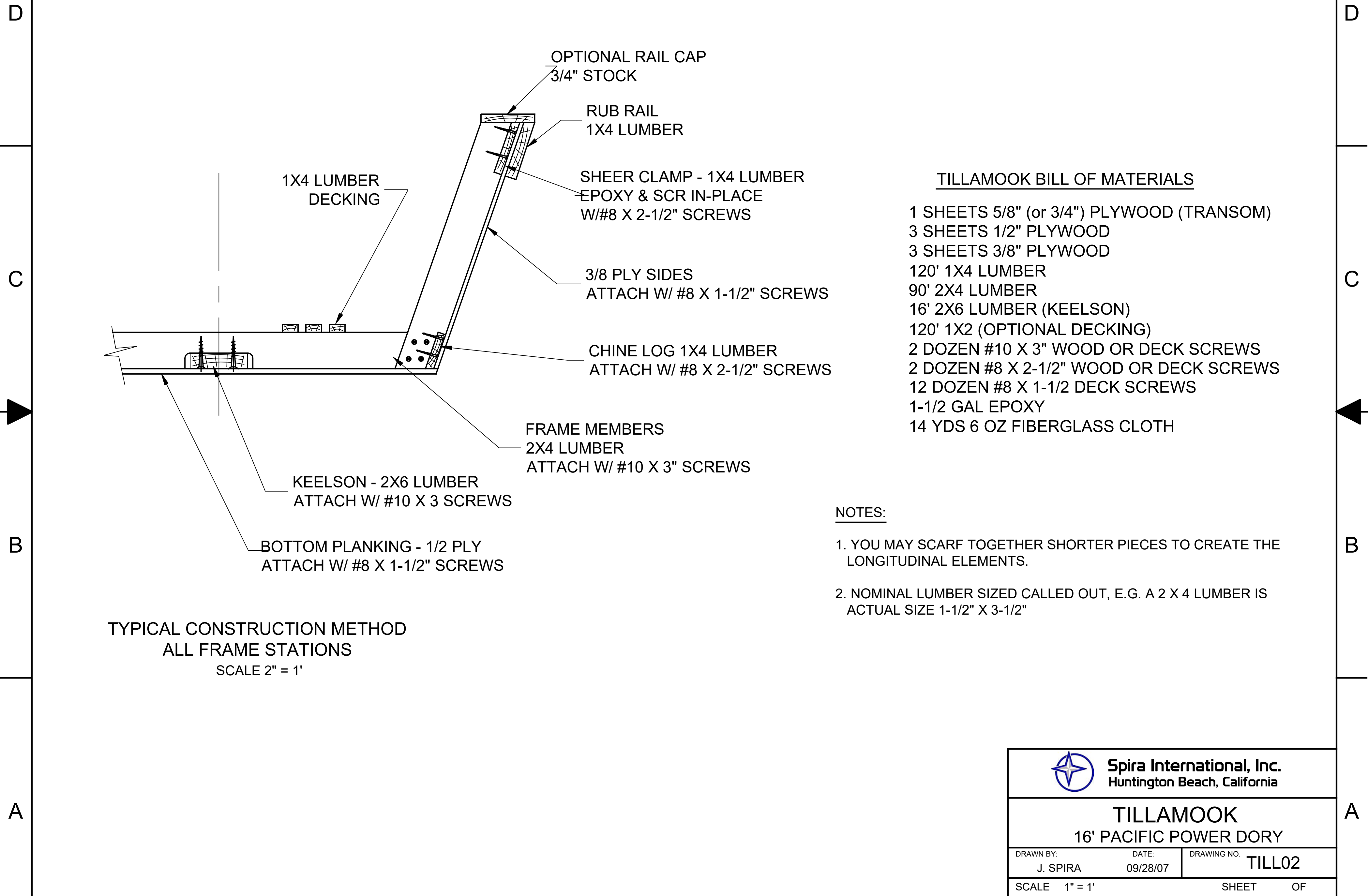
3

2

1

**NOTICE**  
 THIS DRAWING CONTAINS A PROPRIETARY DESIGN ASSIGNED TO SPIRA INTERNATIONAL, INC. ALL RIGHTS TO DUPLICATE, TRANSFER OR USE ARE EXPRESSLY RESERVED BY SPIRA INTERNATIONAL. THE BUYER IS LICENSED TO BUILD ONE ASSEMBLY FROM THESE PLANS.

REVISIONS				
ZONE	LTR	DESCRIPTION	DATE	APPROVED
	C	CORRECTED BOM	05/12/13	JJS




**TILLAMOOK BILL OF MATERIALS**

- 1 SHEETS 5/8" (or 3/4") PLYWOOD (TRANSOM)
- 3 SHEETS 1/2" PLYWOOD
- 3 SHEETS 3/8" PLYWOOD
- 120' 1X4 LUMBER
- 90' 2X4 LUMBER
- 16' 2X6 LUMBER (KEELSON)
- 120' 1X2 (OPTIONAL DECKING)
- 2 DOZEN #10 X 3" WOOD OR DECK SCREWS
- 2 DOZEN #8 X 2-1/2" WOOD OR DECK SCREWS
- 12 DOZEN #8 X 1-1/2" DECK SCREWS
- 1-1/2 GAL EPOXY
- 14 YDS 6 OZ FIBERGLASS CLOTH

**NOTES:**

1. YOU MAY SCARF TOGETHER SHORTER PIECES TO CREATE THE LONGITUDINAL ELEMENTS.
2. NOMINAL LUMBER SIZED CALLED OUT, E.G. A 2 X 4 LUMBER IS ACTUAL SIZE 1-1/2" X 3-1/2"

**TYPICAL CONSTRUCTION METHOD**  
**ALL FRAME STATIONS**  
 SCALE 2" = 1'

 <b>Spira International, Inc.</b> Huntington Beach, California		
<b>TILLAMOOK</b> 16' PACIFIC POWER DORY		
DRAWN BY:	DATE:	DRAWING NO.
J. SPIRA	09/28/07	TILL02
SCALE 1" = 1'		SHEET OF

4

3

2

1