

4

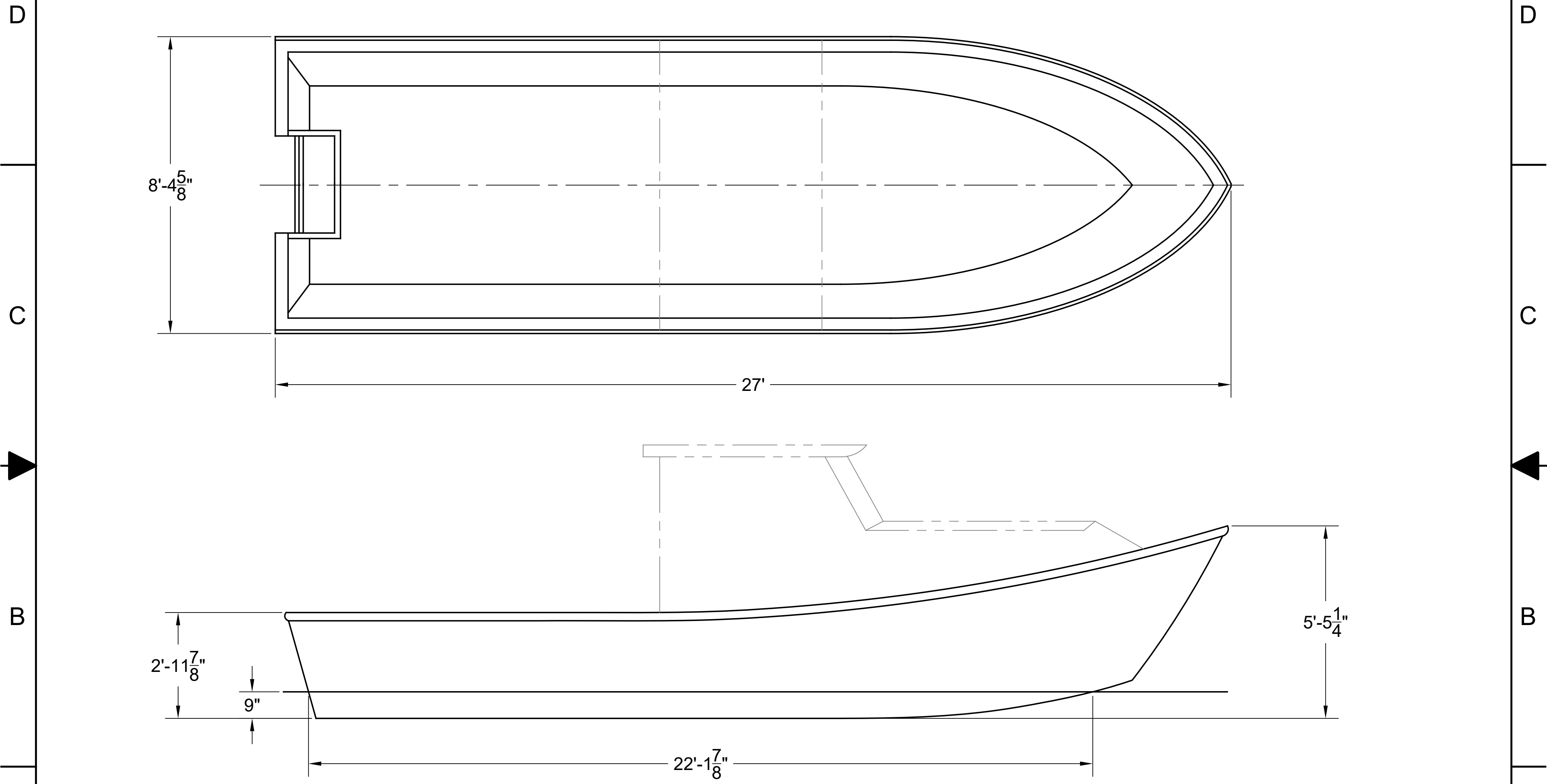
3

2


1

NOTICE
 THIS DRAWING CONTAINS A PROPRIETARY DESIGN ASSIGNED TO SPIRA INTERNATIONAL, INC. ALL RIGHTS TO DUPLICATE, TRANSFER OR USE ARE EXPRESSLY RESERVED BY SPIRA INTERNATIONAL. THE BUYER IS LICENSED TO BUILD ONE ASSEMBLY FROM THESE PLANS.

REVISIONS				
ZONE	LTR	DESCRIPTION	DATE	APPROVED
	A	ADDED SPEC TABLE & MOVED V-BOW	03/22/21	JJS



SPECIFICATIONS	
MAX. DISPLACEMENT	7550 LBS
HULL WEIGHT	2420 LBS
MAX. HP	300 HP
RECOMMENDED HP	115 HP

 **Spira International, Inc.**
 Huntington Beach, California

SITKA
 27' PACIFIC POWER DORY

DRAWN BY: J. SPIRA	DATE: 07/05/08	DRAWING NO. SITK01
-----------------------	-------------------	-----------------------

SCALE 1/2" = 1' SHEET OF

4

3

2

1

A

A

B

B

C

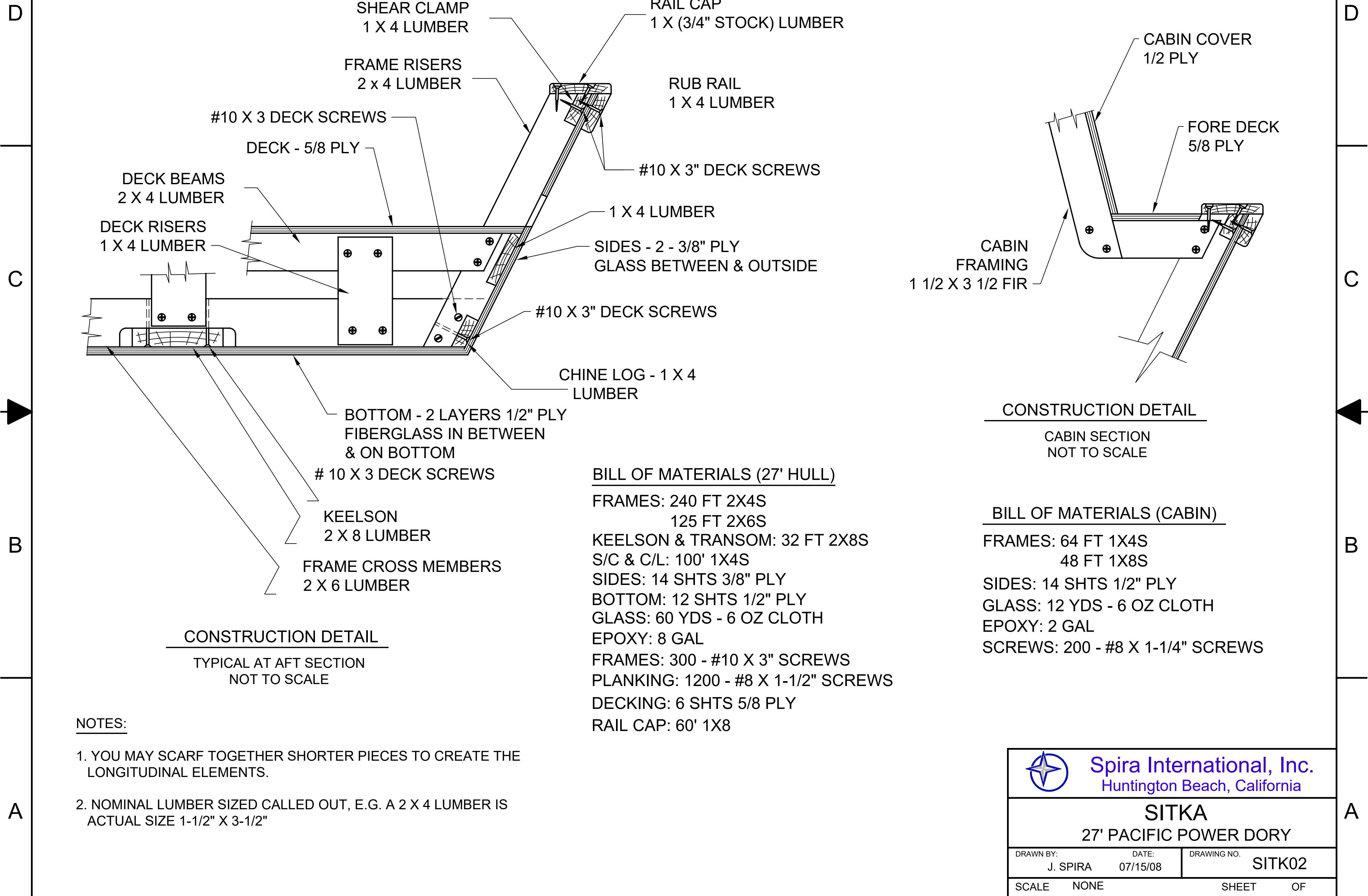
C

D

D

NOTICE
 THIS DRAWING CONTAINS A PROPRIETARY DESIGN ASSIGNED TO SPIRA INTERNATIONAL, INC. ALL RIGHTS TO DUPLICATE, TRANSFER OR USE ARE EXPRESSLY RESERVED BY SPIRA INTERNATIONAL. THE BUYER IS LICENSED TO BUILD ONE ASSEMBLY FROM THESE PLANS.

REVISIONS				
ZONE	LTR	DESCRIPTION	DATE	APPROVED
	B	CORRECTED SOME TYPOS	04/25/11	JJS



CONSTRUCTION DETAIL
 TYPICAL AT AFT SECTION
 NOT TO SCALE

CONSTRUCTION DETAIL
 CABIN SECTION
 NOT TO SCALE

BILL OF MATERIALS (27' HULL)


- FRAMES: 240 FT 2X4S
 125 FT 2X6S
- KEELSON & TRANSOM: 32 FT 2X8S
- S/C & C/L: 100' 1X4S
- SIDES: 14 SHTS 3/8" PLY
- BOTTOM: 12 SHTS 1/2" PLY
- GLASS: 60 YDS - 6 OZ CLOTH
- EPOXY: 8 GAL
- FRAMES: 300 - #10 X 3" SCREWS
- PLANKING: 1200 - #8 X 1-1/2" SCREWS
- DECKING: 6 SHTS 5/8 PLY
- RAIL CAP: 60' 1X8

BILL OF MATERIALS (CABIN)

- FRAMES: 64 FT 1X4S
 48 FT 1X8S
- SIDES: 14 SHTS 1/2" PLY
- GLASS: 12 YDS - 6 OZ CLOTH
- EPOXY: 2 GAL
- SCREWS: 200 - #8 X 1-1/4" SCREWS

NOTES:

1. YOU MAY SCARF TOGETHER SHORTER PIECES TO CREATE THE LONGITUDINAL ELEMENTS.
2. NOMINAL LUMBER SIZED CALLED OUT, E.G. A 2 X 4 LUMBER IS ACTUAL SIZE 1-1/2" X 3-1/2"



Spira International, Inc.
 Huntington Beach, California

SITKA
 27' PACIFIC POWER DORY

DRAWN BY: J. SPIRA	DATE: 07/15/08	DRAWING NO. SITK02
SCALE NONE	SHEET OF	