

4

3

2

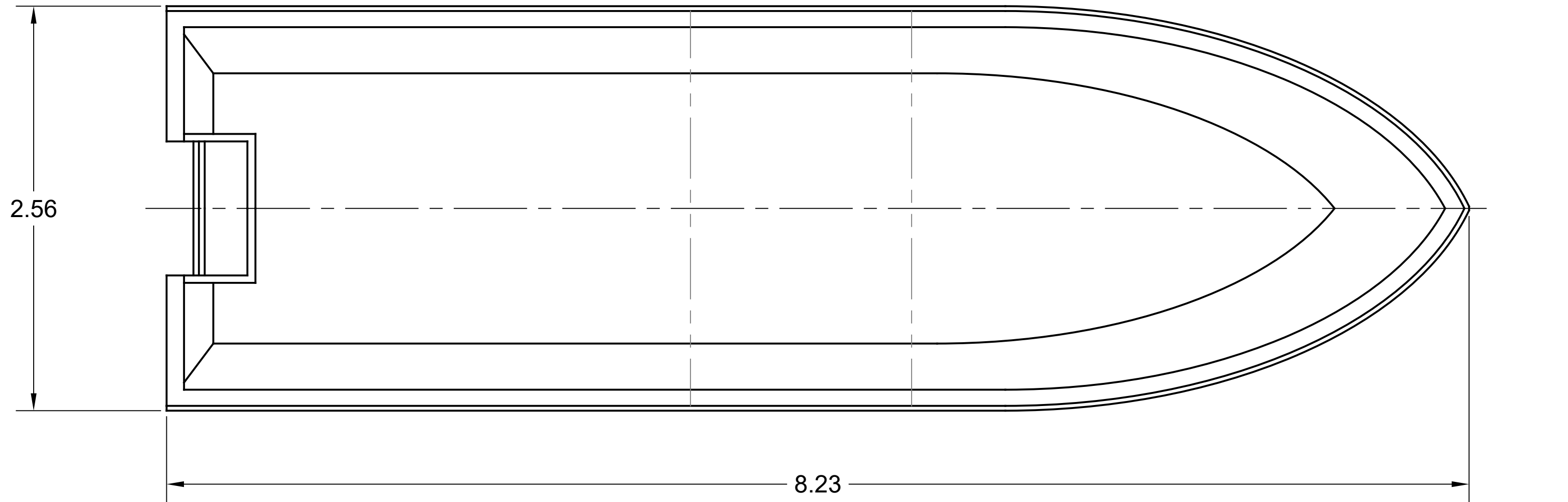
1

NOTICE
 THIS DRAWING CONTAINS A PROPRIETARY DESIGN ASSIGNED TO SPIRA INTERNATIONAL, INC. ALL RIGHTS TO DUPLICATE, TRANSFER OR USE ARE EXPRESSLY RESERVED BY SPIRA INTERNATIONAL. THE BUYER IS LICENSED TO BUILD ONE ASSEMBLY FROM THESE PLANS.

REVISIONS				
ZONE	LTR	DESCRIPTION	DATE	APPROVED
	A	ADDED SPEC TABLE	03/24/21	JJS

D

D

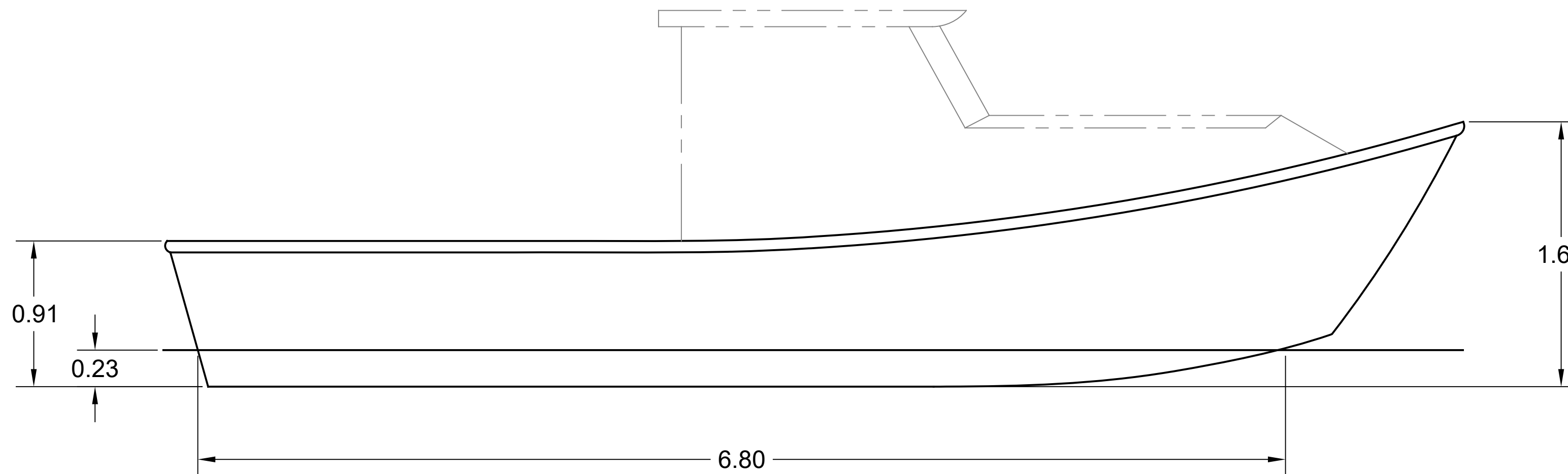


C

C

B

B




B

B

A

A

SPECIFICATIONS	
MAX. DISPLACEMENT	3410 KG
HULL WEIGHT	1110 KG
MAX. HP	300 HP
RECOMMENDED HP	115 HP

 Spira International, Inc. Huntington Beach, California		
SITKA 8.2 M PACIFIC POWER DORY		
DRAWN BY: J. SPIRA	DATE: 04/18/11	DRAWING NO. SITKM01
SCALE 1 / 24	SHEET OF	

4

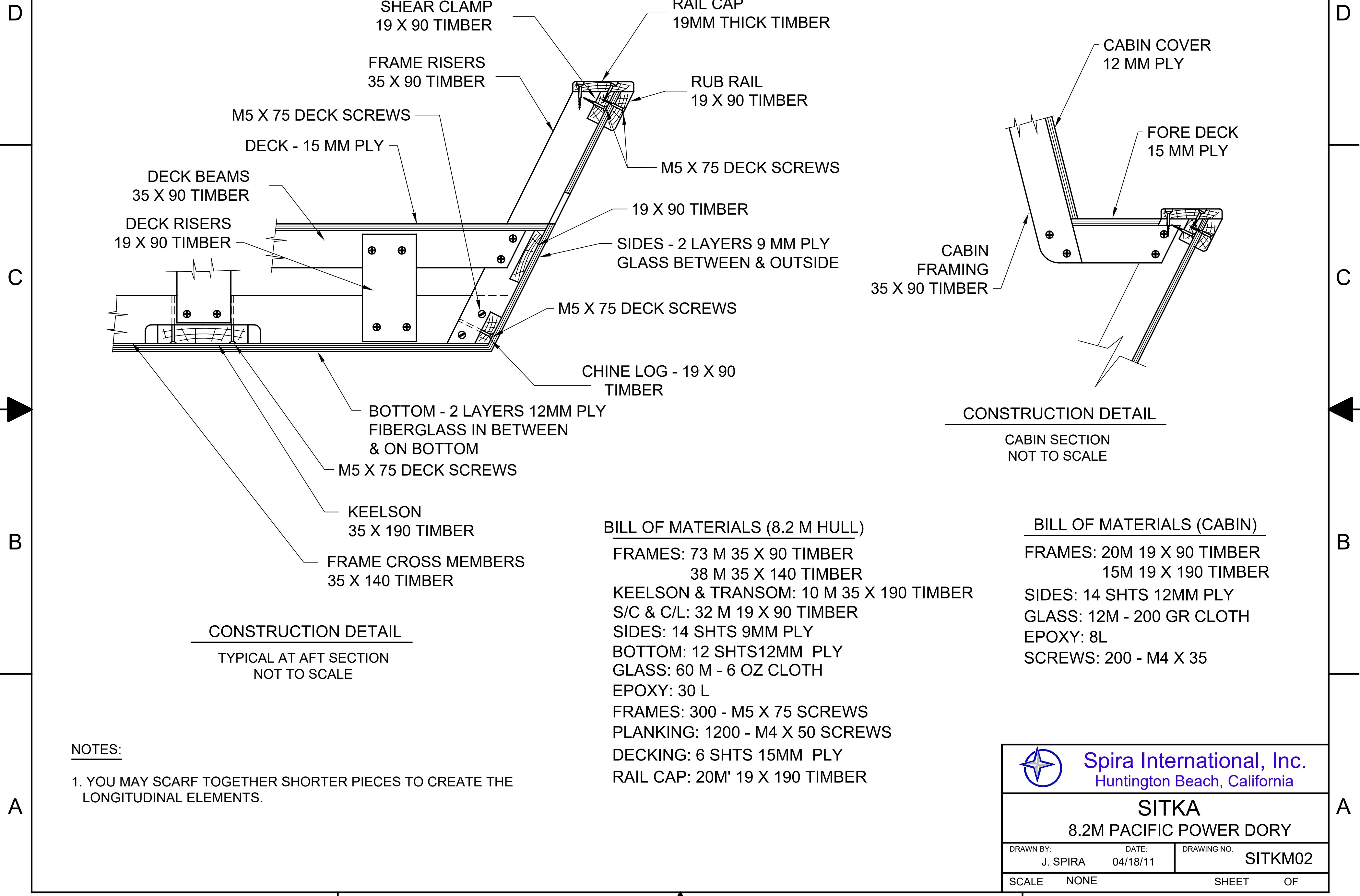
3

2

1

NOTICE
 THIS DRAWING CONTAINS A PROPRIETARY DESIGN ASSIGNED TO SPIRA INTERNATIONAL, INC. ALL RIGHTS TO DUPLICATE, TRANSFER OR USE ARE EXPRESSLY RESERVED BY SPIRA INTERNATIONAL. THE BUYER IS LICENSED TO BUILD ONE ASSEMBLY FROM THESE PLANS.

REVISIONS				
ZONE	LTR	DESCRIPTION	DATE	APPROVED



CONSTRUCTION DETAIL
 TYPICAL AT AFT SECTION
 NOT TO SCALE


CONSTRUCTION DETAIL
 CABIN SECTION
 NOT TO SCALE

BILL OF MATERIALS (8.2 M HULL)
 FRAMES: 73 M 35 X 90 TIMBER
 38 M 35 X 140 TIMBER
 KEELSON & TRANSOM: 10 M 35 X 190 TIMBER
 S/C & C/L: 32 M 19 X 90 TIMBER
 SIDES: 14 SHTS 9MM PLY
 BOTTOM: 12 SHTS 12MM PLY
 GLASS: 60 M - 6 OZ CLOTH
 EPOXY: 30 L
 FRAMES: 300 - M5 X 75 SCREWS
 PLANKING: 1200 - M4 X 50 SCREWS
 DECKING: 6 SHTS 15MM PLY
 RAIL CAP: 20M' 19 X 190 TIMBER

BILL OF MATERIALS (CABIN)
 FRAMES: 20M 19 X 90 TIMBER
 15M 19 X 190 TIMBER
 SIDES: 14 SHTS 12MM PLY
 GLASS: 12M - 200 GR CLOTH
 EPOXY: 8L
 SCREWS: 200 - M4 X 35

NOTES:

1. YOU MAY SCARF TOGETHER SHORTER PIECES TO CREATE THE LONGITUDINAL ELEMENTS.

 Spira International, Inc. Huntington Beach, California	
SITKA 8.2M PACIFIC POWER DORY	
DRAWN BY: J. SPIRA	DATE: 04/18/11
DRAWING NO. SITKM02	
SCALE NONE	SHEET OF