

4

3

2

1

NOTICE
 THIS DRAWING CONTAINS A PROPRIETARY DESIGN ASSIGNED TO SPIRA INTERNATIONAL, INC. ALL RIGHTS TO DUPLICATE, TRANSFER OR SELL THIS DESIGN ARE EXPRESSLY RESERVED. THE BUYER IS LICENSED TO BUILD ONE ASSEMBLY FROM THESE PLANS.

REVISIONS				
ZONE	LTR	DESCRIPTION	DATE	APPROVED
	B	UPDATED TO NEW FORMAT	01/07/09	JJS

D

D

C

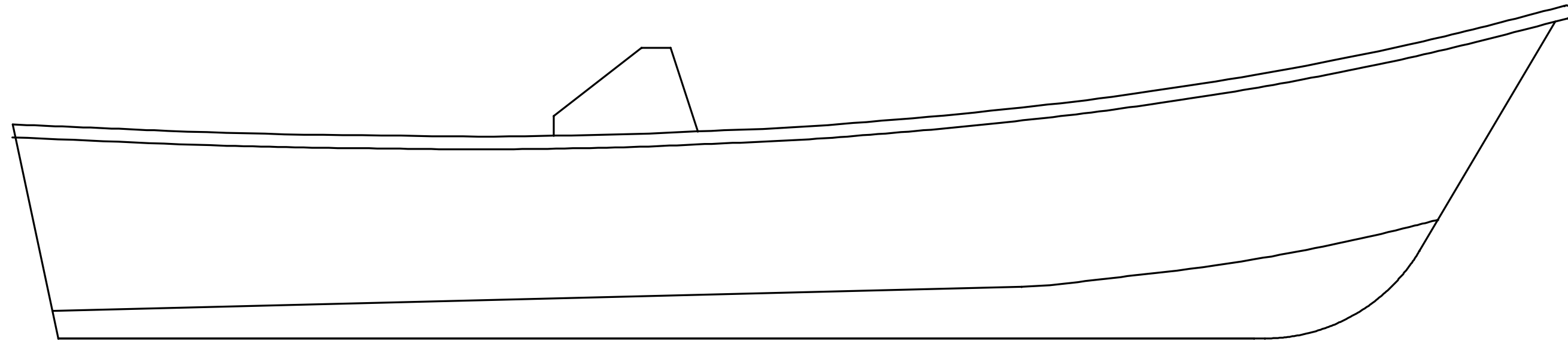
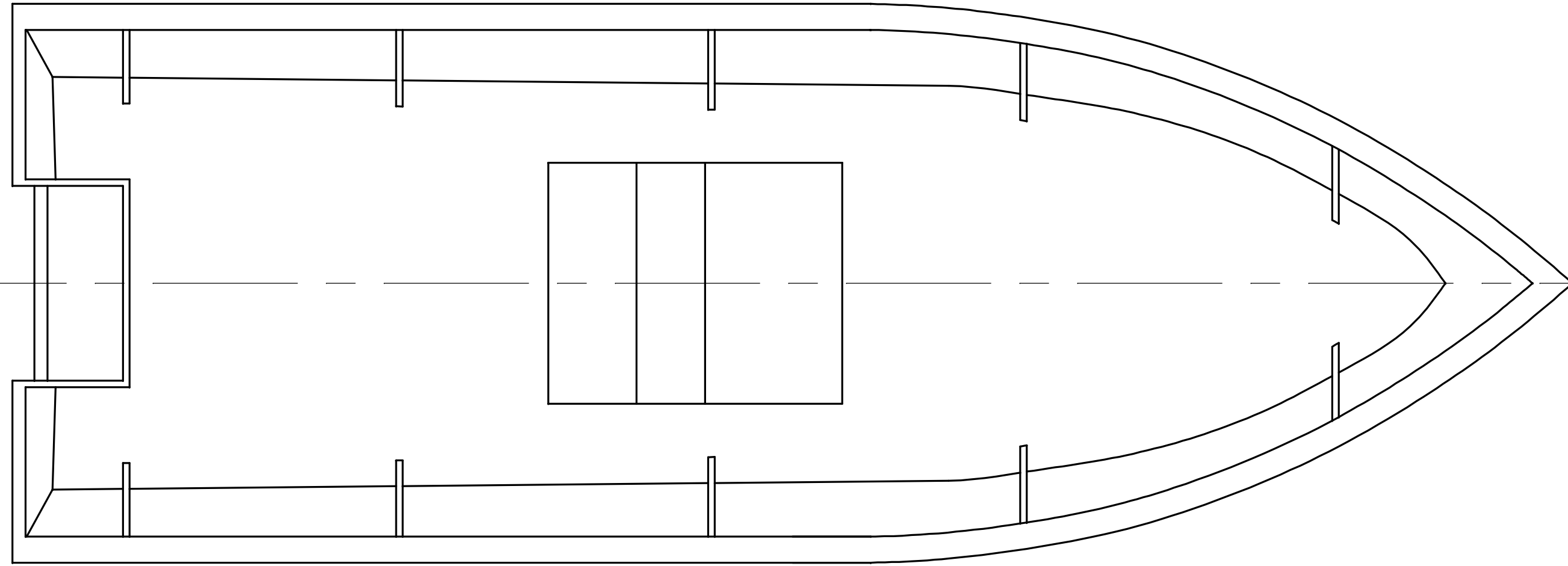
C

B

B

A

A



SAN DIEGAN	
LENGTH	18' 0"
BEAM	6' 6"

Spira International, Inc. <i>Huntington Beach, California</i>		
SAN DIEGAN VEE BOTTOM FISHING BOAT		
DRAWN BY: J. SPIRA	DATE: 04/09/02	DRAWING NO. SAND01
SCALE	3/4" = 1'	SHEET OF

4

3

2

1

4

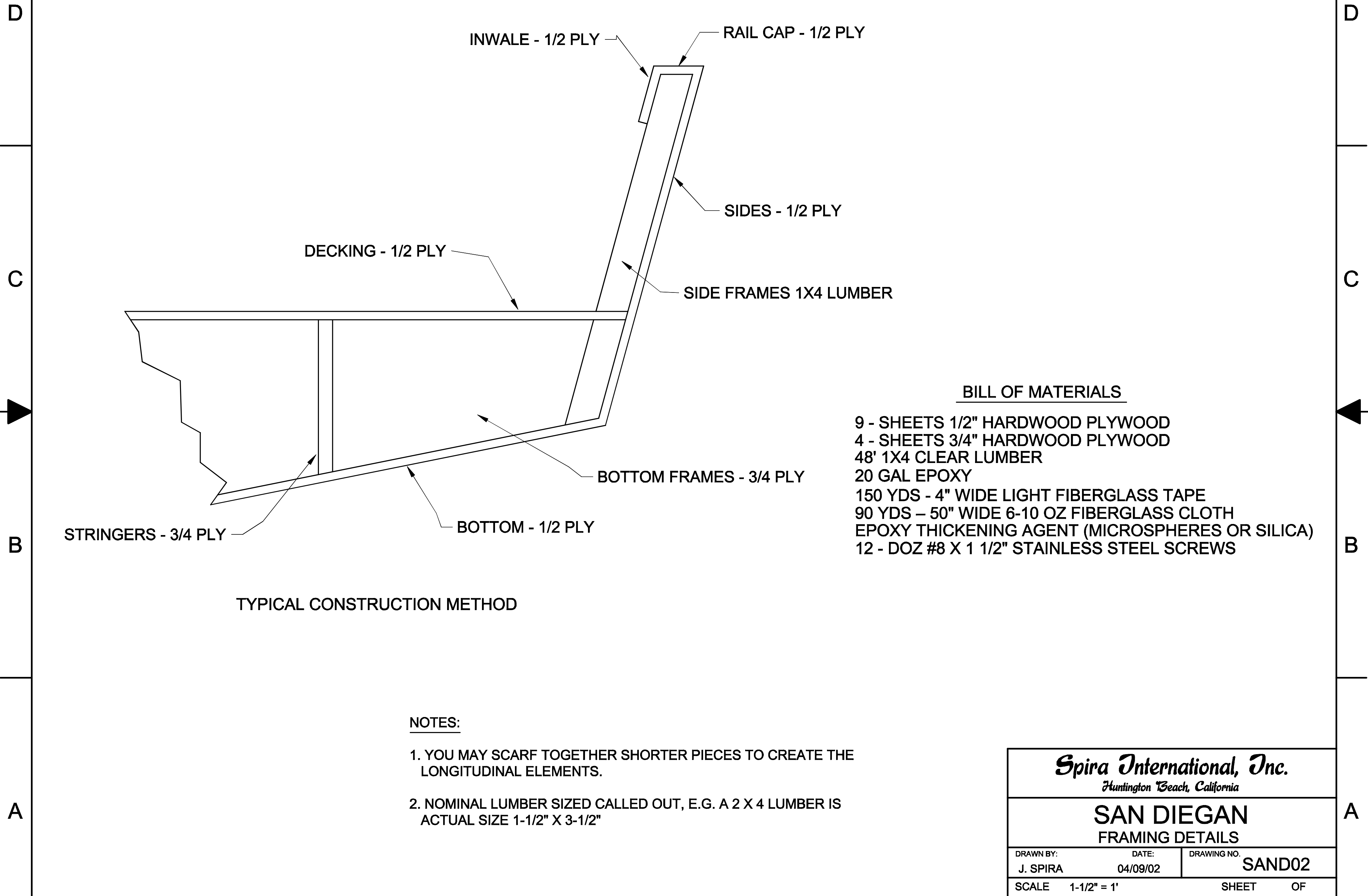
3

2

1

NOTICE
 THIS DRAWING CONTAINS A PROPRIETARY DESIGN ASSIGNED TO SPIRA INTERNATIONAL, INC. ALL RIGHTS TO DUPLICATE, TRANSFER OR USE ARE EXPRESSLY RESERVED BY SPIRA INTERNATIONAL. THE BUYER IS LICENSED TO BUILD ONE ASSEMBLY FROM THESE PLANS.

REVISIONS				
ZONE	LTR	DESCRIPTION	DATE	APPROVED
	C	UPDATED AND ADDED BOM	12/12/12	JJS



BILL OF MATERIALS

- 9 - SHEETS 1/2" HARDWOOD PLYWOOD
- 4 - SHEETS 3/4" HARDWOOD PLYWOOD
- 48' 1X4 CLEAR LUMBER
- 20 GAL EPOXY
- 150 YDS - 4" WIDE LIGHT FIBERGLASS TAPE
- 90 YDS - 50" WIDE 6-10 OZ FIBERGLASS CLOTH
- EPOXY THICKENING AGENT (MICROSPHERES OR SILICA)
- 12 - DOZ #8 X 1 1/2" STAINLESS STEEL SCREWS

TYPICAL CONSTRUCTION METHOD

NOTES:

1. YOU MAY SCARF TOGETHER SHORTER PIECES TO CREATE THE LONGITUDINAL ELEMENTS.
2. NOMINAL LUMBER SIZED CALLED OUT, E.G. A 2 X 4 LUMBER IS ACTUAL SIZE 1-1/2" X 3-1/2"

Spira International, Inc.
Huntington Beach, California

SAN DIEGAN
 FRAMING DETAILS

DRAWN BY: J. SPIRA	DATE: 04/09/02	DRAWING NO. SAND02
SCALE 1-1/2" = 1'		SHEET OF

4

3

2

1

A

A

B

B

C

C

D

D