

4

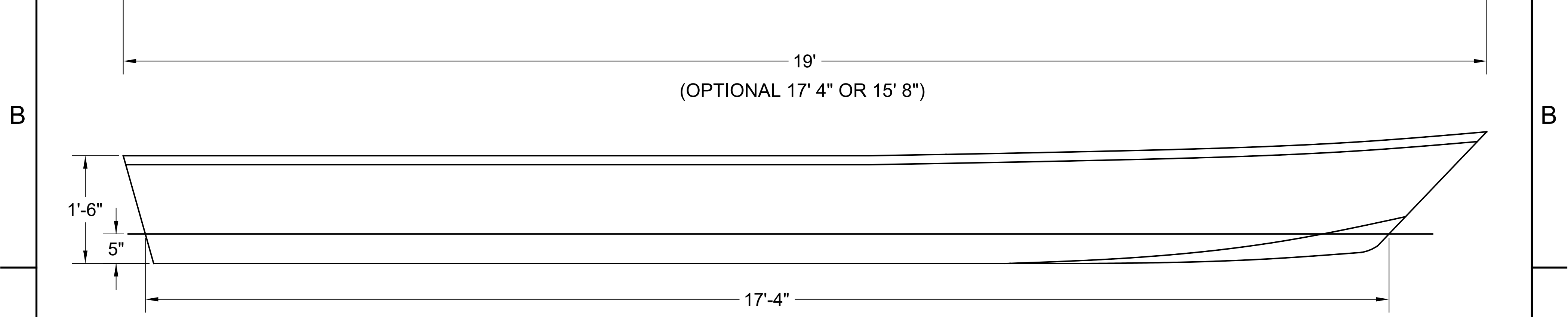
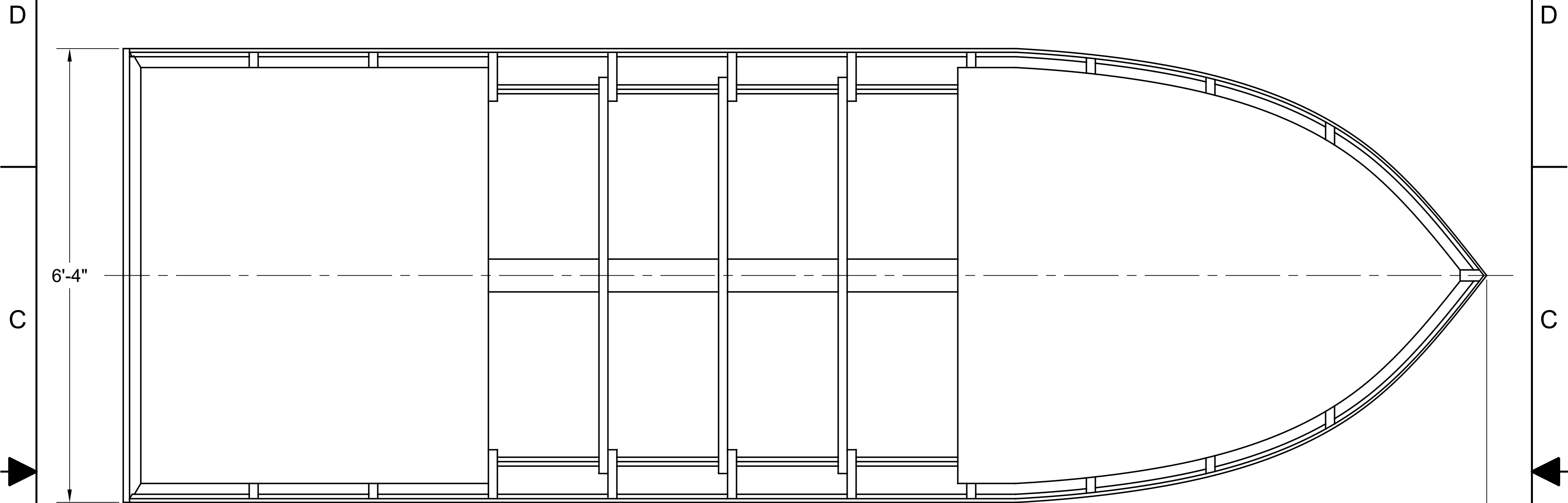
3

2

1

NOTICE
 THIS DRAWING CONTAINS A PROPRIETARY DESIGN ASSIGNED TO SPIRA INTERNATIONAL, INC. ALL RIGHTS TO DUPLICATE, TRANSFER OR USE ARE EXPRESSLY RESERVED BY SPIRA INTERNATIONAL. THE BUYER IS LICENSED TO BUILD ONE ASSEMBLY FROM THESE PLANS.

REVISIONS				
ZONE	LTR	DESCRIPTION	DATE	APPROVED
	B	ADDED WL LENGTH	11/24/14	JJS



SPECIFICATIONS	
MAX. DISPLACEMENT	3360 LBS
HULL WEIGHT	740 LBS
CALC. MAX. HORSEPOWER	120 HP
RECOMMENDED HP	40 HP

 **Spira International, Inc.**
 Huntington Beach, California

SABINE
 15-1/2', 17-1/2' OR 19' FLATS BOAT

DRAWN BY: J. SPIRA	DATE: 04/21/12	DRAWING NO. SABI01
-----------------------	-------------------	-----------------------

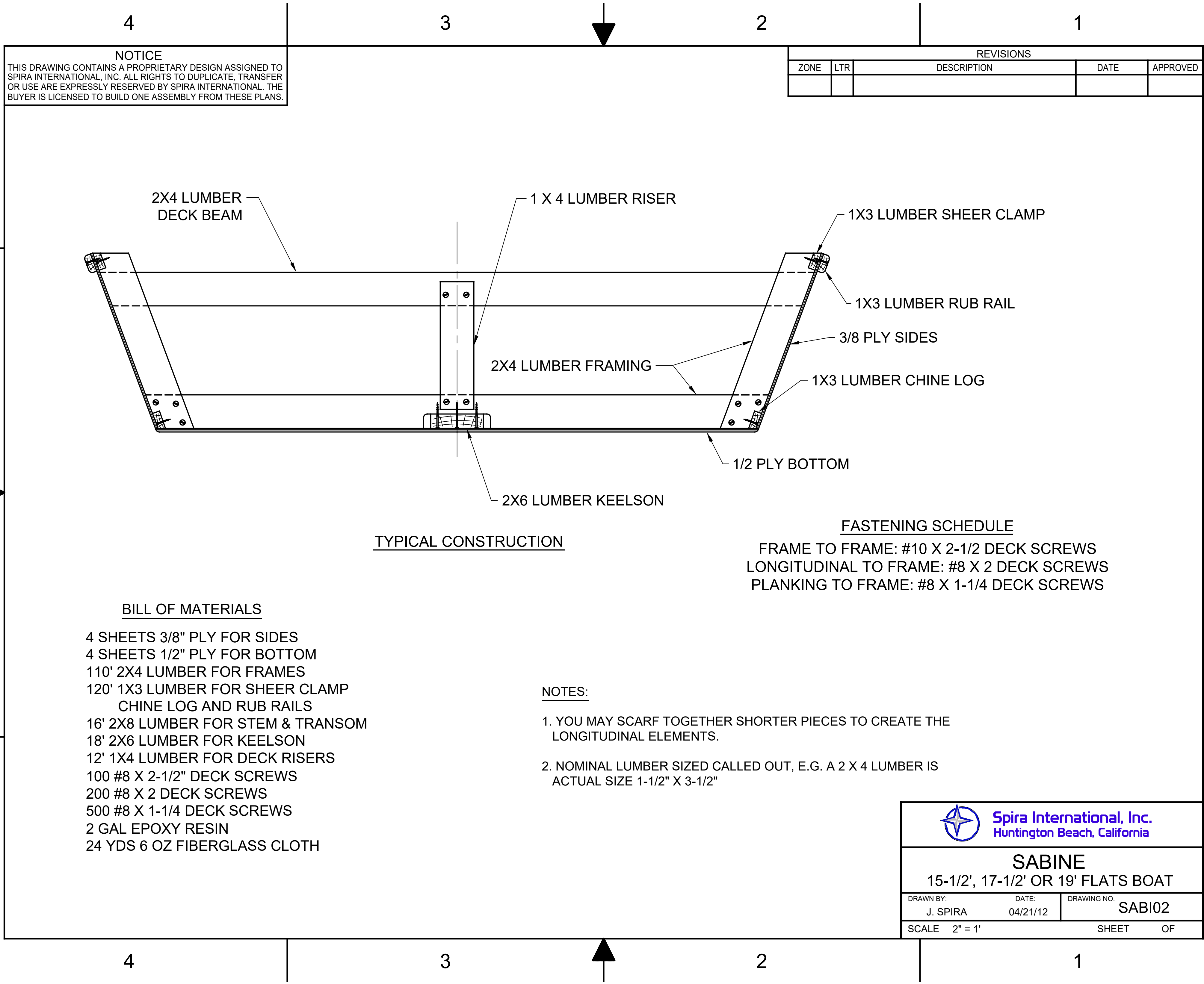
SCALE 1" = 1' SHEET OF

4

3

2

1



NOTICE
 THIS DRAWING CONTAINS A PROPRIETARY DESIGN ASSIGNED TO SPIRA INTERNATIONAL, INC. ALL RIGHTS TO DUPLICATE, TRANSFER OR USE ARE EXPRESSLY RESERVED BY SPIRA INTERNATIONAL. THE BUYER IS LICENSED TO BUILD ONE ASSEMBLY FROM THESE PLANS.

REVISIONS				
ZONE	LTR	DESCRIPTION	DATE	APPROVED

TYPICAL CONSTRUCTION


FASTENING SCHEDULE
 FRAME TO FRAME: #10 X 2-1/2 DECK SCREWS
 LONGITUDINAL TO FRAME: #8 X 2 DECK SCREWS
 PLANKING TO FRAME: #8 X 1-1/4 DECK SCREWS

BILL OF MATERIALS

- 4 SHEETS 3/8" PLY FOR SIDES
- 4 SHEETS 1/2" PLY FOR BOTTOM
- 110' 2X4 LUMBER FOR FRAMES
- 120' 1X3 LUMBER FOR SHEER CLAMP
CHINE LOG AND RUB RAILS
- 16' 2X8 LUMBER FOR STEM & TRANSOM
- 18' 2X6 LUMBER FOR KEELSON
- 12' 1X4 LUMBER FOR DECK RISERS
- 100 #8 X 2-1/2" DECK SCREWS
- 200 #8 X 2 DECK SCREWS
- 500 #8 X 1-1/4 DECK SCREWS
- 2 GAL EPOXY RESIN
- 24 YDS 6 OZ FIBERGLASS CLOTH

NOTES:

1. YOU MAY SCARF TOGETHER SHORTER PIECES TO CREATE THE LONGITUDINAL ELEMENTS.
2. NOMINAL LUMBER SIZED CALLED OUT, E.G. A 2 X 4 LUMBER IS ACTUAL SIZE 1-1/2" X 3-1/2"

 Spira International, Inc. Huntington Beach, California		
SABINE 15-1/2', 17-1/2' OR 19' FLATS BOAT		
DRAWN BY:	DATE:	DRAWING NO.
J. SPIRA	04/21/12	SABI02
SCALE 2" = 1'		SHEET OF