

4

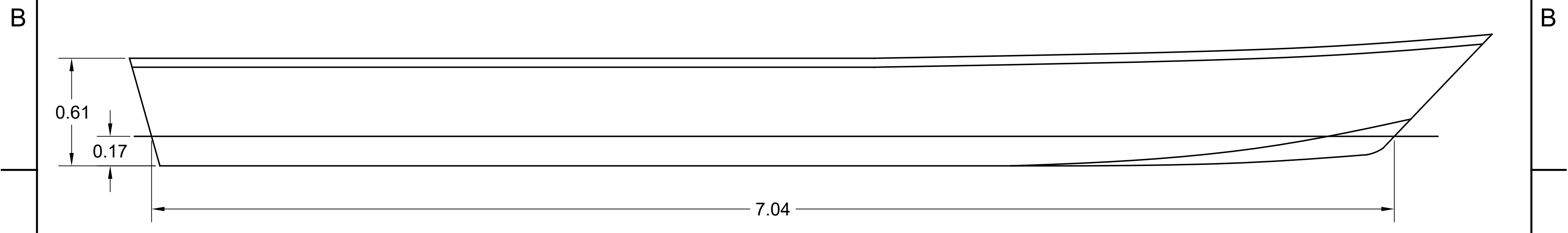
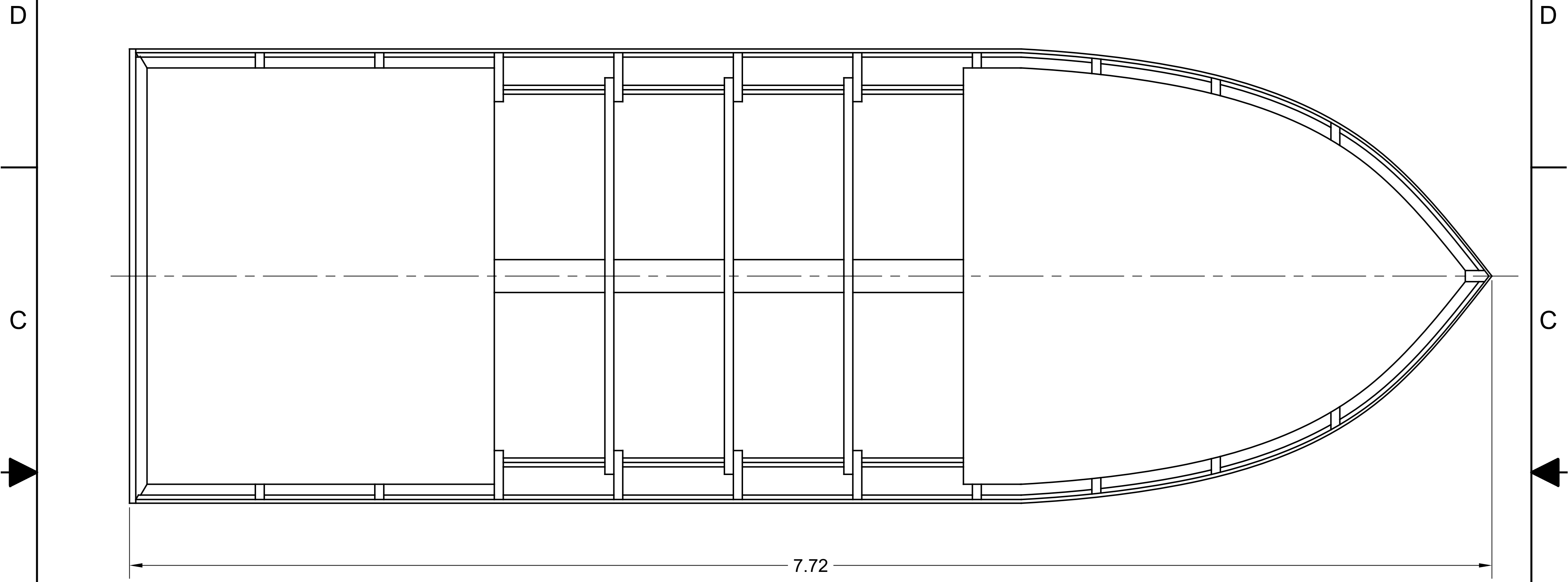
3

2


1

**NOTICE**  
 THIS DRAWING CONTAINS A PROPRIETARY DESIGN ASSIGNED TO SPIRA INTERNATIONAL, INC. ALL RIGHTS TO DUPLICATE, TRANSFER OR USE ARE EXPRESSLY RESERVED BY SPIRA INTERNATIONAL. THE BUYER IS LICENSED TO BUILD ONE ASSEMBLY FROM THESE PLANS.

REVISIONS				
ZONE	LTR	DESCRIPTION	DATE	APPROVED



SPECIFICATIONS	
MAX. DISPLACEMENT	1527 KG
HULL WEIGHT	335 KG
CALC. MAX. HORSEPOWER	120 HP
RECOMMENDED HP	40 HP

 **Spira International, Inc.**  
 Huntington Beach, California

**SABINE**  
 4.8M, 5.3M OR 5.7M FLATS BOAT

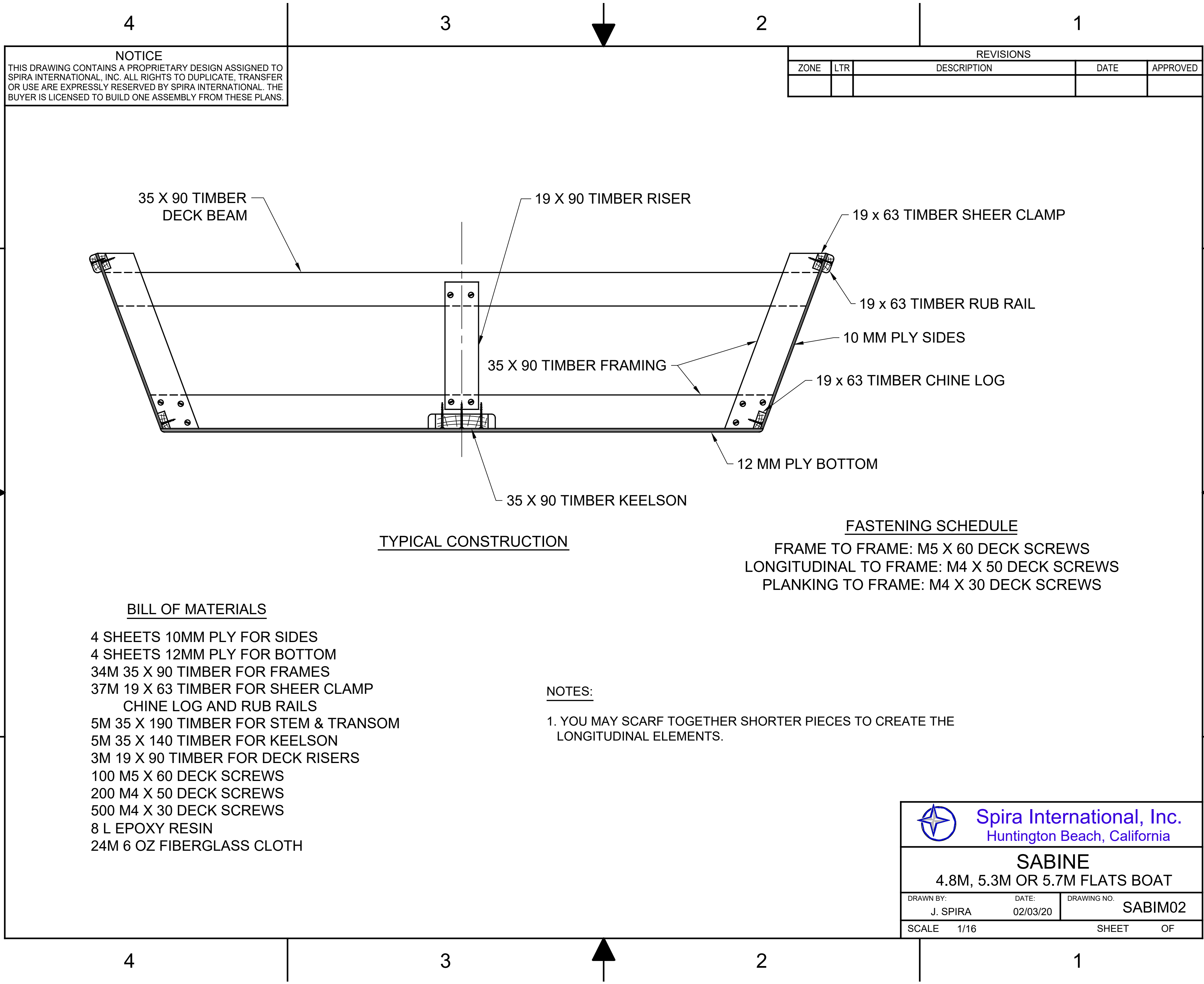
DRAWN BY: J. SPIRA	DATE: 02/03/20	DRAWING NO. SABIM01
SCALE 1/16	SHEET OF	

4

3

2

1



**NOTICE**  
 THIS DRAWING CONTAINS A PROPRIETARY DESIGN ASSIGNED TO SPIRA INTERNATIONAL, INC. ALL RIGHTS TO DUPLICATE, TRANSFER OR USE ARE EXPRESSLY RESERVED BY SPIRA INTERNATIONAL. THE BUYER IS LICENSED TO BUILD ONE ASSEMBLY FROM THESE PLANS.

REVISIONS				
ZONE	LTR	DESCRIPTION	DATE	APPROVED

TYPICAL CONSTRUCTION


FASTENING SCHEDULE  
 FRAME TO FRAME: M5 X 60 DECK SCREWS  
 LONGITUDINAL TO FRAME: M4 X 50 DECK SCREWS  
 PLANKING TO FRAME: M4 X 30 DECK SCREWS

BILL OF MATERIALS

- 4 SHEETS 10MM PLY FOR SIDES
- 4 SHEETS 12MM PLY FOR BOTTOM
- 34M 35 X 90 TIMBER FOR FRAMES
- 37M 19 X 63 TIMBER FOR SHEER CLAMP CHINE LOG AND RUB RAILS
- 5M 35 X 190 TIMBER FOR STEM & TRANSOM
- 5M 35 X 140 TIMBER FOR KEELSON
- 3M 19 X 90 TIMBER FOR DECK RISERS
- 100 M5 X 60 DECK SCREWS
- 200 M4 X 50 DECK SCREWS
- 500 M4 X 30 DECK SCREWS
- 8 L EPOXY RESIN
- 24M 6 OZ FIBERGLASS CLOTH

NOTES:

- 1. YOU MAY SCARF TOGETHER SHORTER PIECES TO CREATE THE LONGITUDINAL ELEMENTS.

 <b>Spira International, Inc.</b> Huntington Beach, California		
<b>SABINE</b> 4.8M, 5.3M OR 5.7M FLATS BOAT		
DRAWN BY:	DATE:	DRAWING NO.
J. SPIRA	02/03/20	SABIM02
SCALE	1/16	SHEET OF