

4

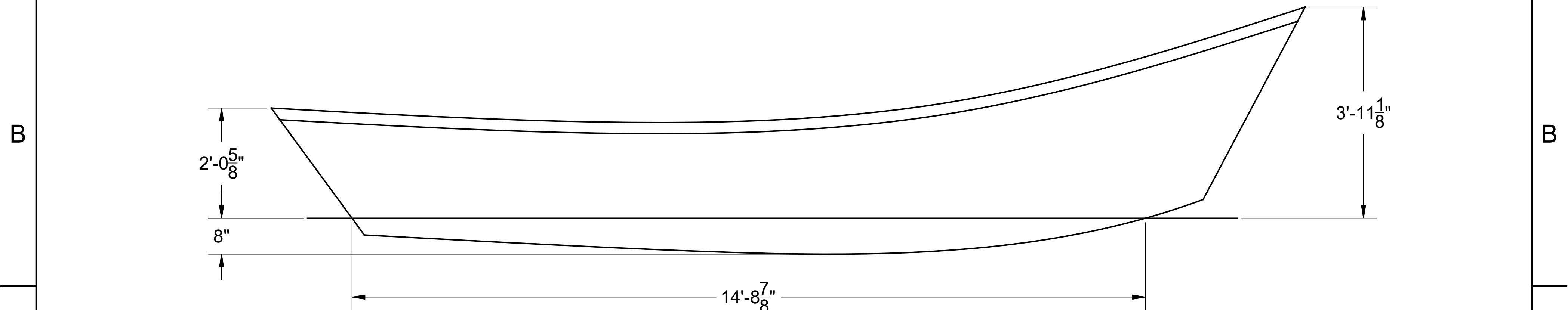
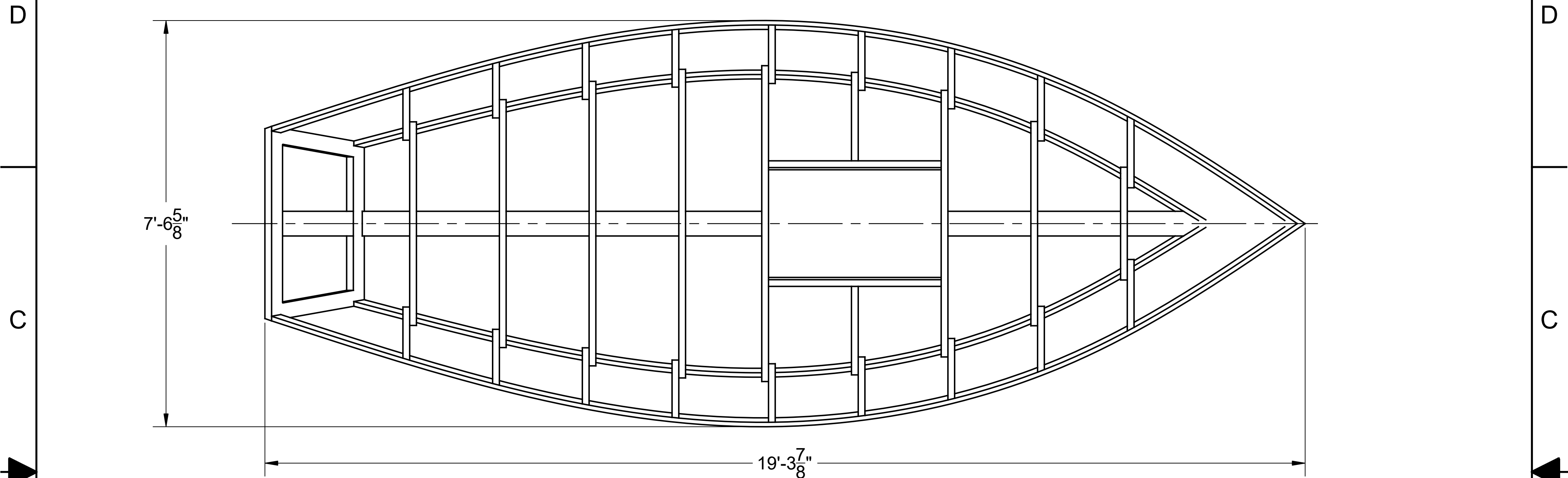
3

2


1

NOTICE
 THIS DRAWING CONTAINS A PROPRIETARY DESIGN ASSIGNED TO SPIRA INTERNATIONAL, INC. ALL RIGHTS TO DUPLICATE, TRANSFER OR USE ARE EXPRESSLY RESERVED BY SPIRA INTERNATIONAL. THE BUYER IS LICENSED TO BUILD ONE ASSEMBLY FROM THESE PLANS.

REVISIONS				
ZONE	LTR	DESCRIPTION	DATE	APPROVED



SPECIFICATIONS	
MAX. DISPLACEMENT	4450 LBS
HULL WEIGHT	1410 LBS
MAX. HP	50 HP
RECOMMENDED HP	25 HP

 **Spira International, Inc.**
 Huntington Beach, California

OUTER BANKS
 19' SURF DORY / POWER DRIFTER

DRAWN BY: J. SPIRA	DATE: 08/23/15	DRAWING NO. OUTE01
-----------------------	-------------------	-----------------------

SCALE 3/4" = 1' SHEET OF

4

3

2

1

4

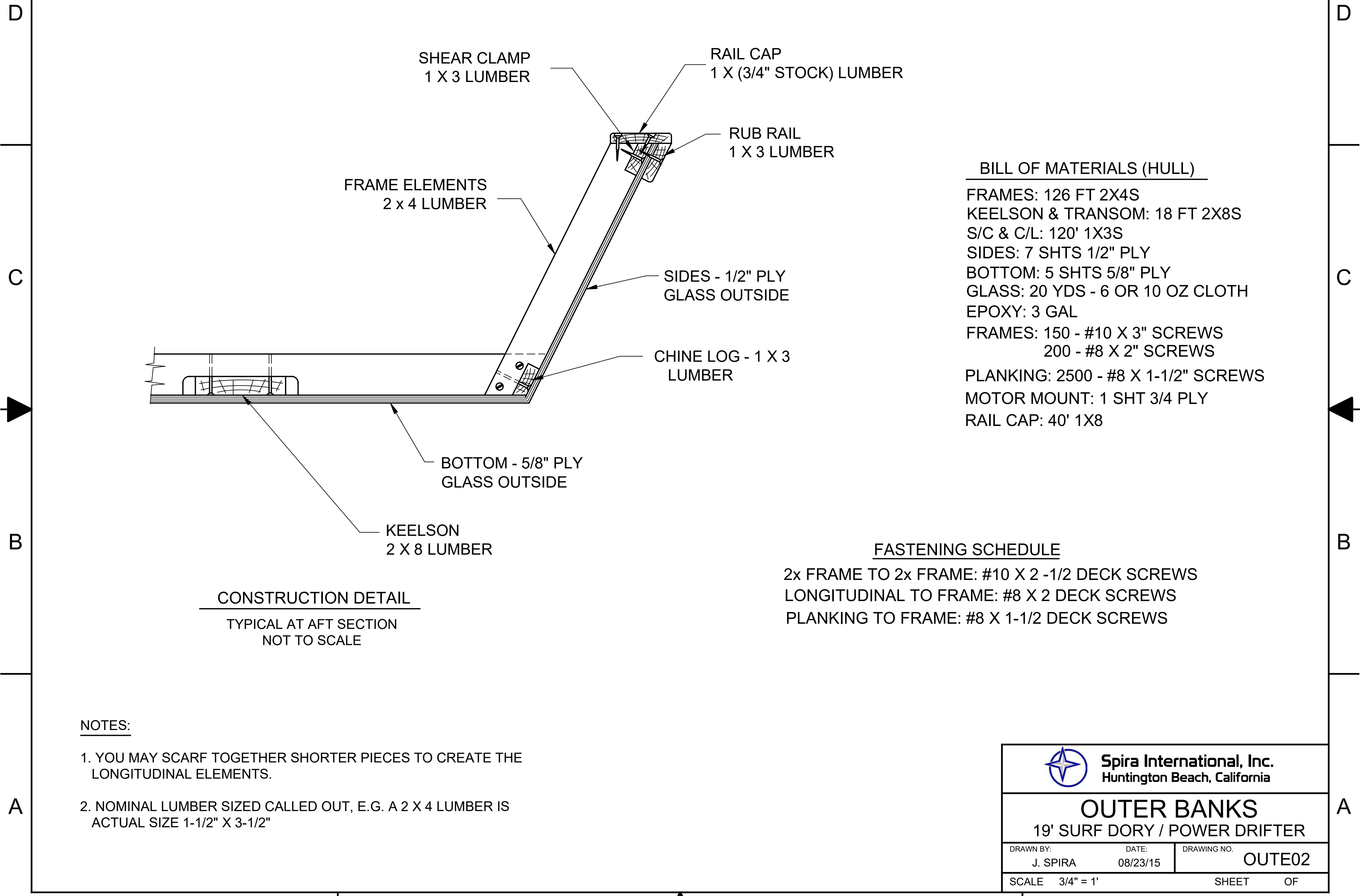
3

2

1

NOTICE
 THIS DRAWING CONTAINS A PROPRIETARY DESIGN ASSIGNED TO SPIRA INTERNATIONAL, INC. ALL RIGHTS TO DUPLICATE, TRANSFER OR USE ARE EXPRESSLY RESERVED BY SPIRA INTERNATIONAL. THE BUYER IS LICENSED TO BUILD ONE ASSEMBLY FROM THESE PLANS.

REVISIONS				
ZONE	LTR	DESCRIPTION	DATE	APPROVED



SHEAR CLAMP
1 X 3 LUMBER

RAIL CAP
1 X (3/4" STOCK) LUMBER

RUB RAIL
1 X 3 LUMBER

FRAME ELEMENTS
2 x 4 LUMBER

SIDES - 1/2" PLY
GLASS OUTSIDE

CHINE LOG - 1 X 3
LUMBER

BOTTOM - 5/8" PLY
GLASS OUTSIDE

KEELSON
2 X 8 LUMBER

BILL OF MATERIALS (HULL)

- FRAMES: 126 FT 2X4S
- KEELSON & TRANSOM: 18 FT 2X8S
- S/C & C/L: 120' 1X3S
- SIDES: 7 SHTS 1/2" PLY
- BOTTOM: 5 SHTS 5/8" PLY
- GLASS: 20 YDS - 6 OR 10 OZ CLOTH
- EPOXY: 3 GAL
- FRAMES: 150 - #10 X 3" SCREWS
- 200 - #8 X 2" SCREWS
- PLANKING: 2500 - #8 X 1-1/2" SCREWS
- MOTOR MOUNT: 1 SHT 3/4 PLY
- RAIL CAP: 40' 1X8

FASTENING SCHEDULE

- 2x FRAME TO 2x FRAME: #10 X 2 -1/2 DECK SCREWS
- LONGITUDINAL TO FRAME: #8 X 2 DECK SCREWS
- PLANKING TO FRAME: #8 X 1-1/2 DECK SCREWS

CONSTRUCTION DETAIL

TYPICAL AT AFT SECTION
NOT TO SCALE

NOTES:

1. YOU MAY SCARF TOGETHER SHORTER PIECES TO CREATE THE LONGITUDINAL ELEMENTS.
2. NOMINAL LUMBER SIZED CALLED OUT, E.G. A 2 X 4 LUMBER IS ACTUAL SIZE 1-1/2" X 3-1/2"



Spira International, Inc.
Huntington Beach, California

OUTER BANKS

19' SURF DORY / POWER DRIFTER

DRAWN BY: J. SPIRA	DATE: 08/23/15	DRAWING NO. OUTE02
-----------------------	-------------------	-----------------------

SCALE 3/4" = 1' SHEET OF

4

3

2

1