

4

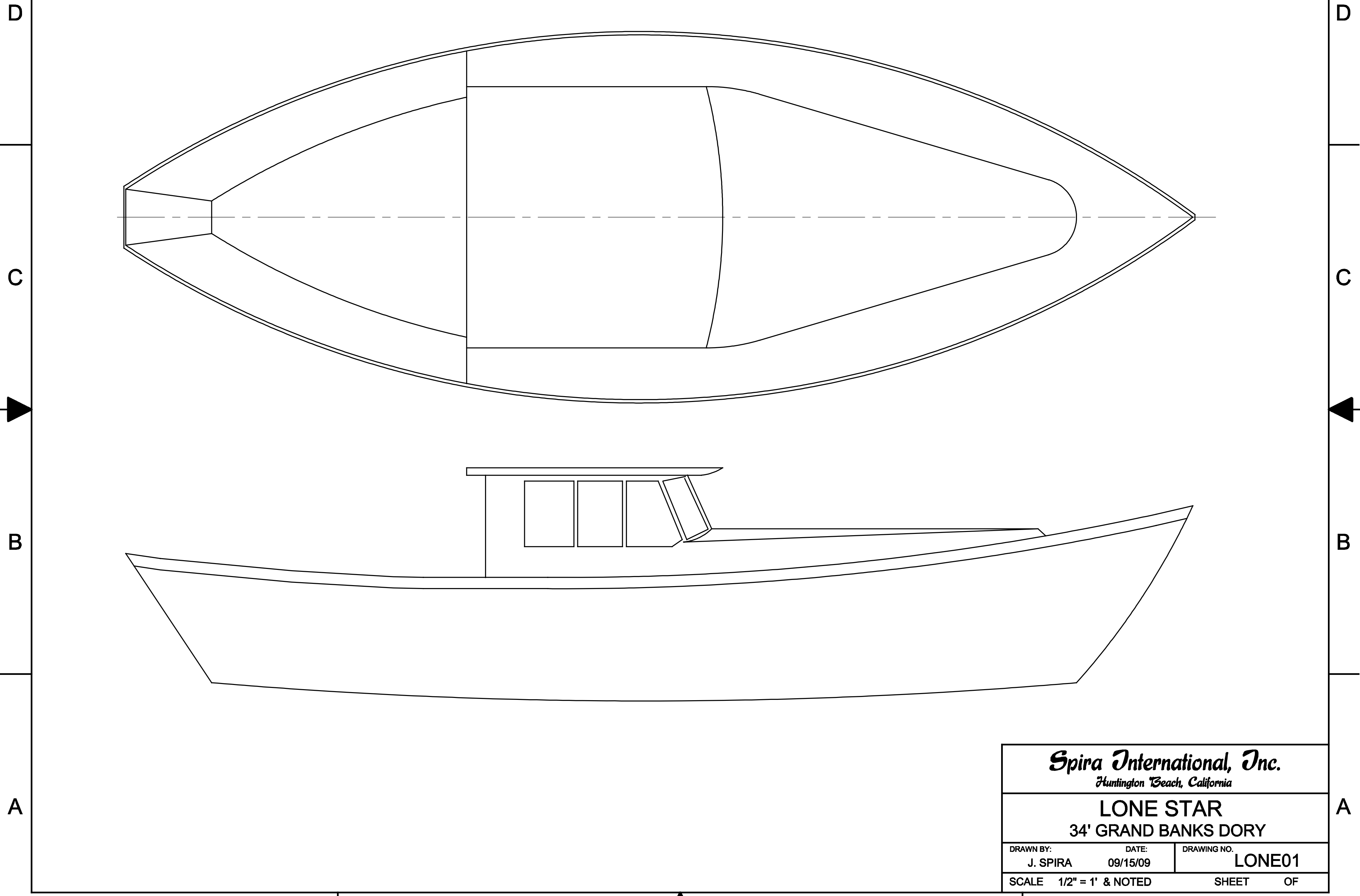
3

2

1

NOTICE
 THIS DRAWING CONTAINS A PROPRIETARY DESIGN ASSIGNED TO SPIRA INTERNATIONAL, INC. ALL RIGHTS TO DUPLICATE, TRANSFER OR USE ARE EXPRESSLY RESERVED BY SPIRA INTERNATIONAL. THE BUYER IS LICENSED TO BUILD ONE ASSEMBLY FROM THESE PLANS.

REVISIONS				
ZONE	LTR	DESCRIPTION	DATE	APPROVED



Spira International, Inc.
Huntington Beach, California

LONE STAR
34' GRAND BANKS DORY

DRAWN BY: J. SPIRA	DATE: 09/15/09	DRAWING NO. LONE01
SCALE 1/2" = 1' & NOTED		SHEET OF

4

3

2

1

4

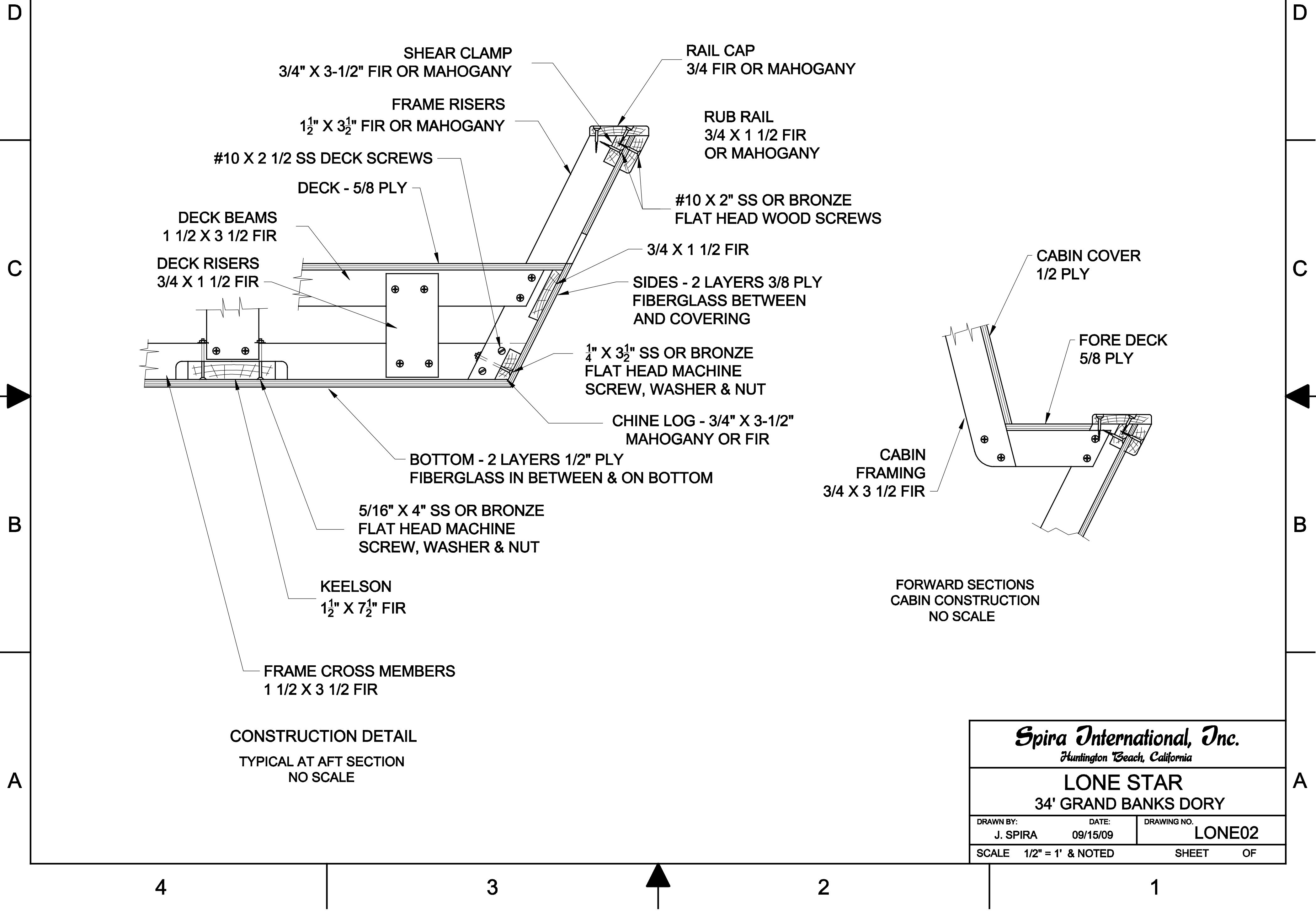
3

2

1

NOTICE
 THIS DRAWING CONTAINS A PROPRIETARY DESIGN ASSIGNED TO SPIRA INTERNATIONAL, INC. ALL RIGHTS TO DUPLICATE, TRANSFER OR USE ARE EXPRESSLY RESERVED BY SPIRA INTERNATIONAL. THE BUYER IS LICENSED TO BUILD ONE ASSEMBLY FROM THESE PLANS.

REVISIONS				
ZONE	LTR	DESCRIPTION	DATE	APPROVED



CONSTRUCTION DETAIL
 TYPICAL AT AFT SECTION
 NO SCALE

FORWARD SECTIONS
 CABIN CONSTRUCTION
 NO SCALE

Spira International, Inc. <i>Huntington Beach, California</i>		
LONE STAR 34' GRAND BANKS DORY		
DRAWN BY: J. SPIRA	DATE: 09/15/09	DRAWING NO. LONE02
SCALE 1/2" = 1' & NOTED		SHEET OF