

4

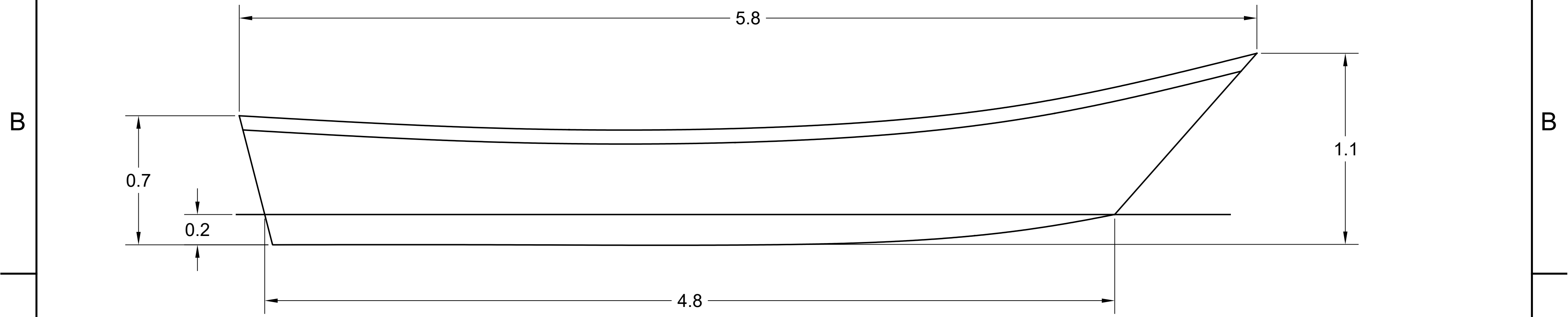
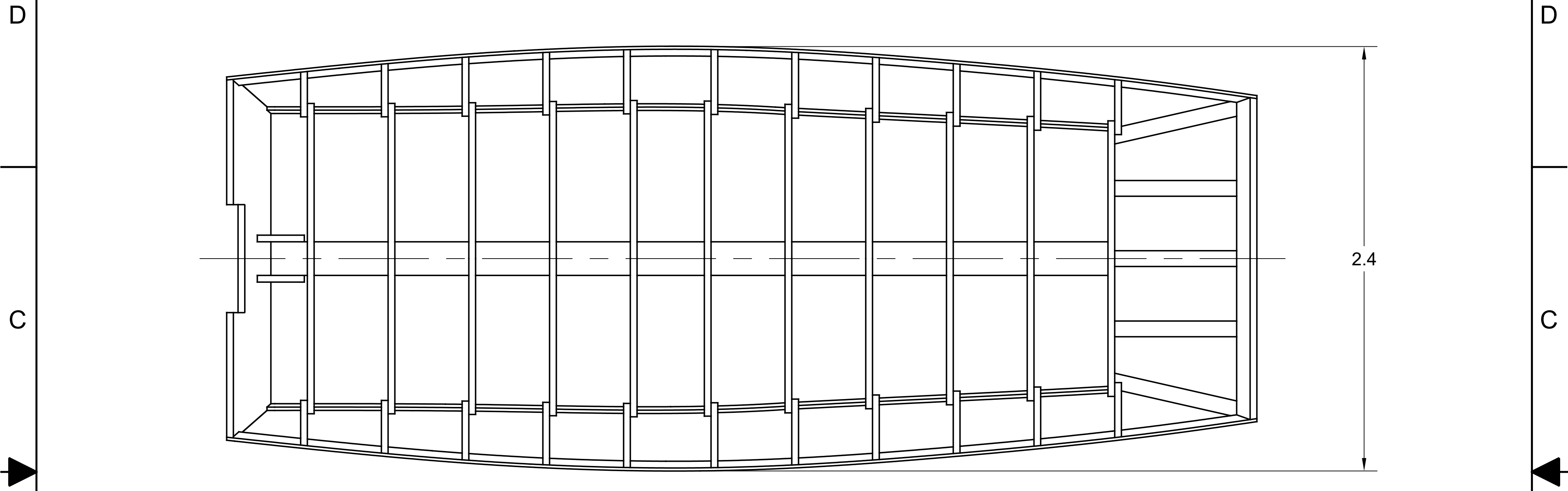
3

2


1

NOTICE
 THIS DRAWING CONTAINS A PROPRIETARY DESIGN ASSIGNED TO SPIRA INTERNATIONAL, INC. ALL RIGHTS TO DUPLICATE, TRANSFER OR USE ARE EXPRESSLY RESERVED BY SPIRA INTERNATIONAL. THE BUYER IS LICENSED TO BUILD ONE ASSEMBLY FROM THESE PLANS.

REVISIONS				
ZONE	LTR	DESCRIPTION	DATE	APPROVED



SPECIFICATIONS	
MAX. DISPLACEMENT	1055 KG
HULL WEIGHT	470 KG
MAX. HP - 20" REMOTE	150 HP (112 KW)
RECOMMENDED HP	50 HP (36 KW)

 **Spira International, Inc.**
 Huntington Beach, California

GALVESTON
 5.8M GARVEY

DRAWN BY: J. SPIRA	DATE: 12/21/18	DRAWING NO. GALVM01
-----------------------	-------------------	------------------------

SCALE 1 / 16 & NOTED SHEET OF

4

3

2

1

4

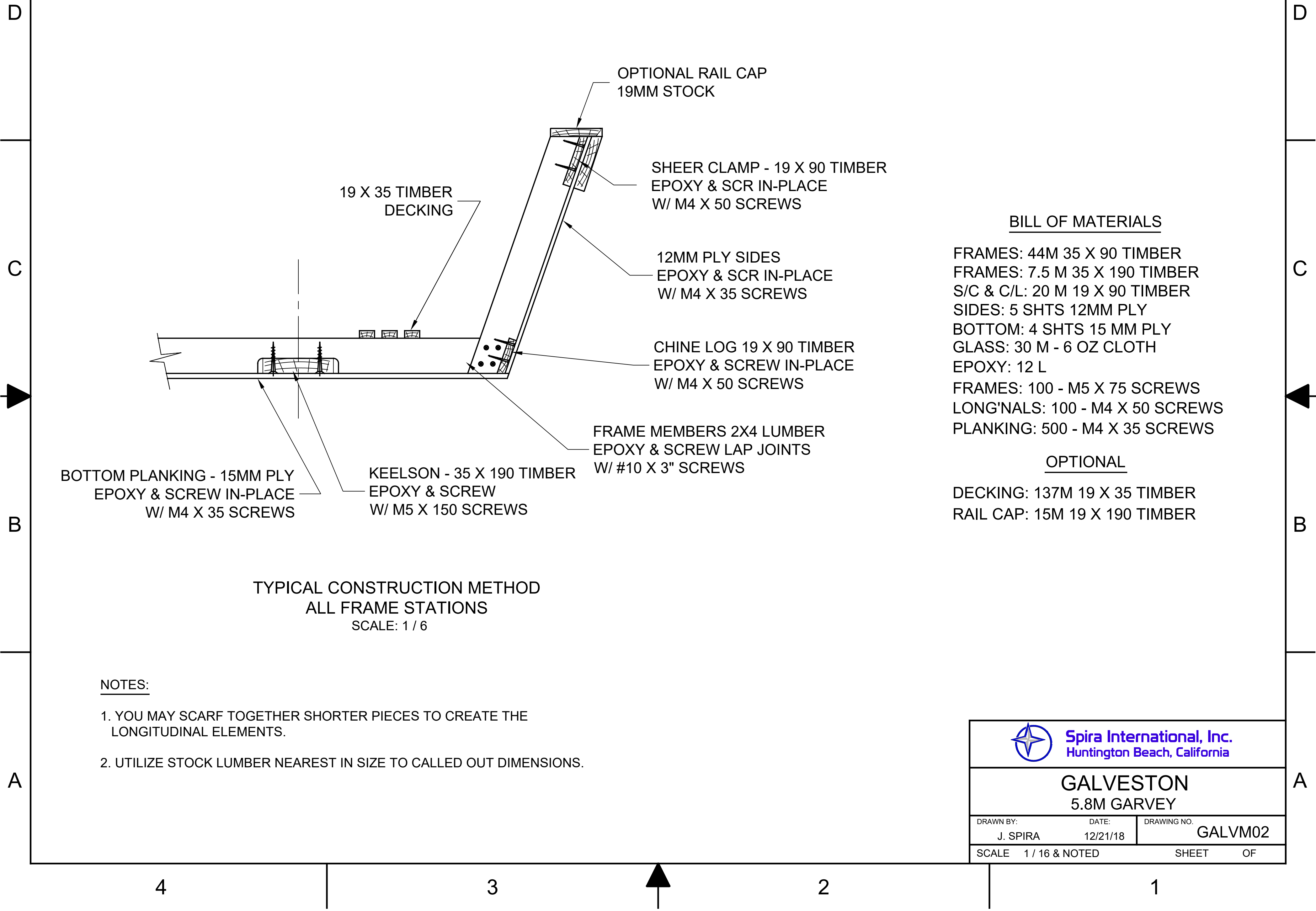
3

2

1

NOTICE
 THIS DRAWING CONTAINS A PROPRIETARY DESIGN ASSIGNED TO SPIRA INTERNATIONAL, INC. ALL RIGHTS TO DUPLICATE, TRANSFER OR USE ARE EXPRESSLY RESERVED BY SPIRA INTERNATIONAL. THE BUYER IS LICENSED TO BUILD ONE ASSEMBLY FROM THESE PLANS.

REVISIONS				
ZONE	LTR	DESCRIPTION	DATE	APPROVED



BILL OF MATERIALS

- FRAMES: 44M 35 X 90 TIMBER
- FRAMES: 7.5 M 35 X 190 TIMBER
- S/C & C/L: 20 M 19 X 90 TIMBER
- SIDES: 5 SHTS 12MM PLY
- BOTTOM: 4 SHTS 15 MM PLY
- GLASS: 30 M - 6 OZ CLOTH
- EPOXY: 12 L
- FRAMES: 100 - M5 X 75 SCREWS
- LONG'NALS: 100 - M4 X 50 SCREWS
- PLANKING: 500 - M4 X 35 SCREWS


OPTIONAL

- DECKING: 137M 19 X 35 TIMBER
- RAIL CAP: 15M 19 X 190 TIMBER

TYPICAL CONSTRUCTION METHOD
 ALL FRAME STATIONS
 SCALE: 1 / 6

NOTES:

1. YOU MAY SCARF TOGETHER SHORTER PIECES TO CREATE THE LONGITUDINAL ELEMENTS.
2. UTILIZE STOCK LUMBER NEAREST IN SIZE TO CALLED OUT DIMENSIONS.

 Spira International, Inc. Huntington Beach, California		
GALVESTON 5.8M GARVEY		
DRAWN BY: J. SPIRA	DATE: 12/21/18	DRAWING NO. GALVM02
SCALE 1 / 16 & NOTED		SHEET OF