

4

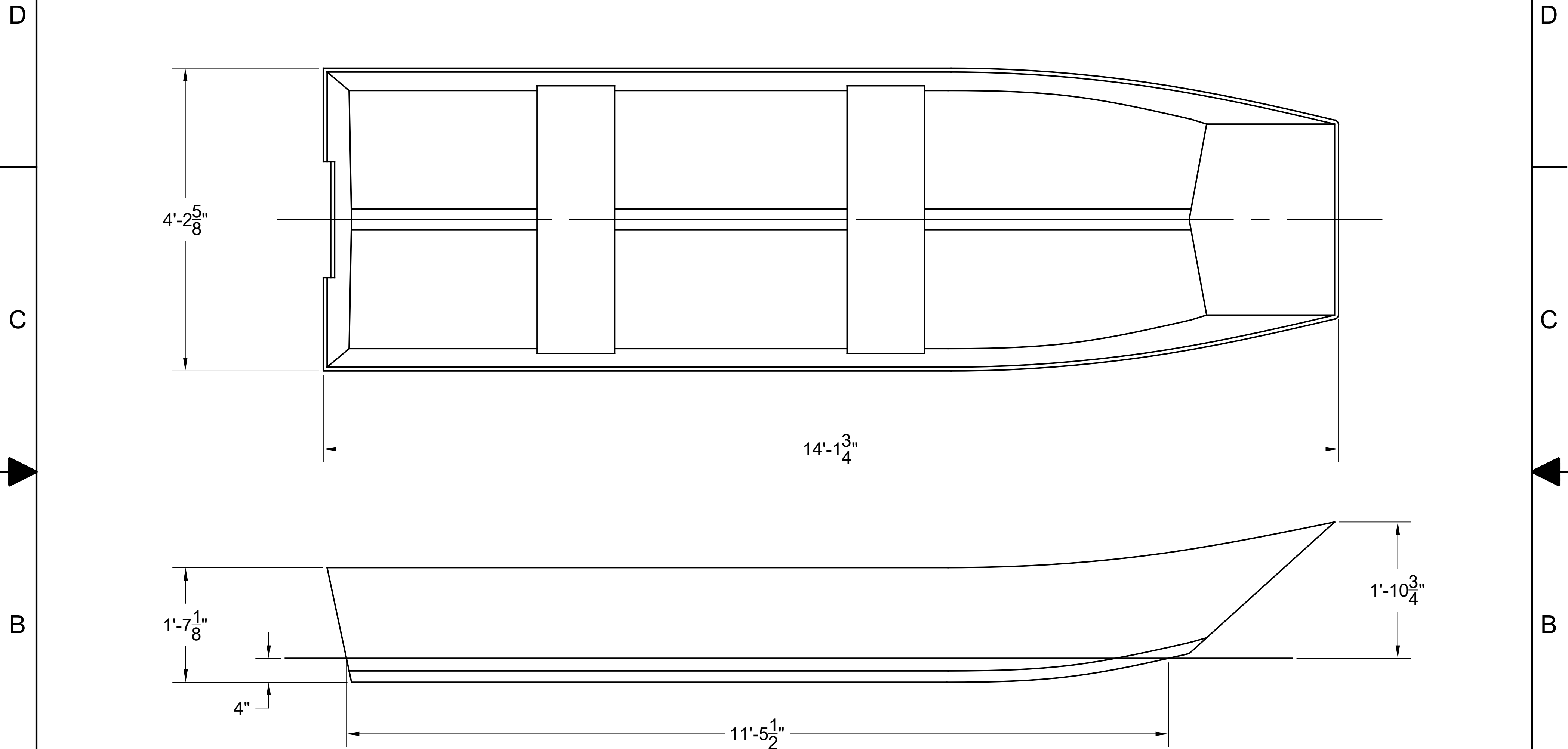
3

2


1

NOTICE
 THIS DRAWING CONTAINS A PROPRIETARY DESIGN ASSIGNED TO SPIRA INTERNATIONAL, INC. ALL RIGHTS TO DUPLICATE, TRANSFER OR USE ARE EXPRESSLY RESERVED BY SPIRA INTERNATIONAL. THE BUYER IS LICENSED TO BUILD ONE ASSEMBLY FROM THESE PLANS.

REVISIONS				
ZONE	LTR	DESCRIPTION	DATE	APPROVED
	A	ADDED TABLE	19/13/14	JJS



SPECIFICATIONS	
MAX. DISPLACEMENT	900 LBS
HULL WEIGHT	180 LBS
CALC. MAX. HORSEPOWER	20 HP
RECOMMENDED HP	9.9 HP

 **Spira International, Inc.**
 Huntington Beach, California

CRAWDAD
 SEMI-VEE JON BOAT

DRAWN BY: J. SPIRA	DATE: 04/12/08	DRAWING NO. CRAW01
SCALE 1" = 1'		SHEET OF

4

3

2

1

A

A

B

B

C

C

D

D

4

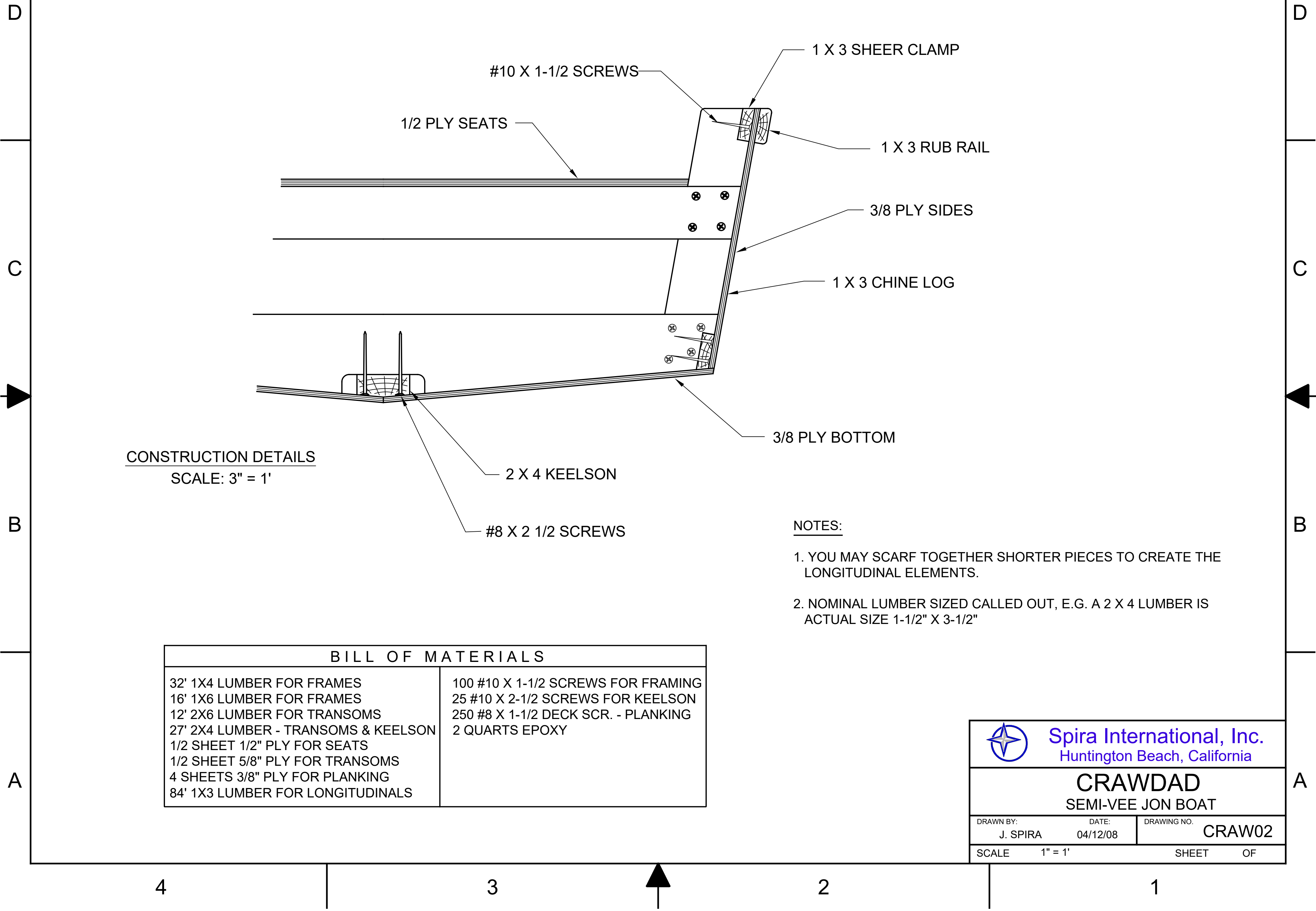
3

2

1

NOTICE
 THIS DRAWING CONTAINS A PROPRIETARY DESIGN ASSIGNED TO SPIRA INTERNATIONAL, INC. ALL RIGHTS TO DUPLICATE, TRANSFER OR USE ARE EXPRESSLY RESERVED BY SPIRA INTERNATIONAL. THE BUYER IS LICENSED TO BUILD ONE ASSEMBLY FROM THESE PLANS.

REVISIONS				
ZONE	LTR	DESCRIPTION	DATE	APPROVED
	A	UPDATED BOM AND NOTES	03/01/13	JJS




CONSTRUCTION DETAILS
 SCALE: 3" = 1'

NOTES:

1. YOU MAY SCARF TOGETHER SHORTER PIECES TO CREATE THE LONGITUDINAL ELEMENTS.
2. NOMINAL LUMBER SIZED CALLED OUT, E.G. A 2 X 4 LUMBER IS ACTUAL SIZE 1-1/2" X 3-1/2"

BILL OF MATERIALS	
32' 1X4 LUMBER FOR FRAMES	100 #10 X 1-1/2 SCREWS FOR FRAMING
16' 1X6 LUMBER FOR FRAMES	25 #10 X 2-1/2 SCREWS FOR KEELSON
12' 2X6 LUMBER FOR TRANSOMS	250 #8 X 1-1/2 DECK SCR. - PLANKING
27' 2X4 LUMBER - TRANSOMS & KEELSON	2 QUARTS EPOXY
1/2 SHEET 1/2" PLY FOR SEATS	
1/2 SHEET 5/8" PLY FOR TRANSOMS	
4 SHEETS 3/8" PLY FOR PLANKING	
84' 1X3 LUMBER FOR LONGITUDINALS	

 **Spira International, Inc.**
 Huntington Beach, California

CRAWDAD
 SEMI-VEE JON BOAT

DRAWN BY: J. SPIRA	DATE: 04/12/08	DRAWING NO. CRAW02
SCALE 1" = 1'		SHEET OF