

4

3

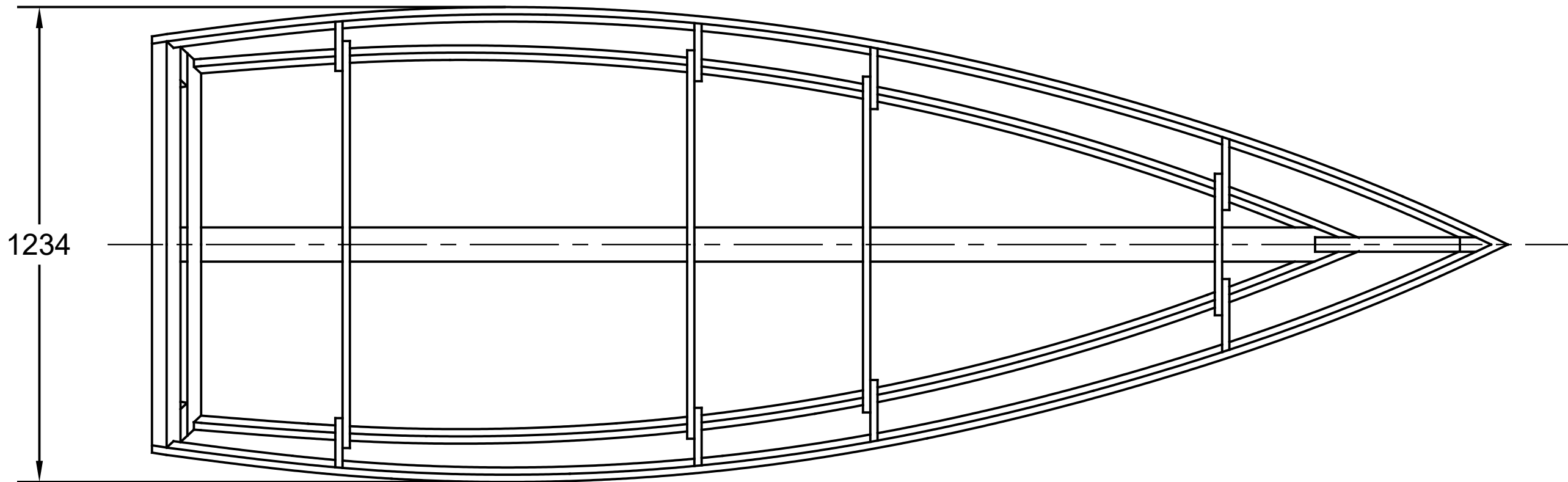
2

1

NOTICE
 THIS DRAWING CONTAINS A PROPRIETARY DESIGN ASSIGNED TO SPIRA INTERNATIONAL, INC. ALL RIGHTS TO DUPLICATE, TRANSFER OR USE ARE EXPRESSLY RESERVED BY SPIRA INTERNATIONAL. THE BUYER IS LICENSED TO BUILD ONE ASSEMBLY FROM THESE PLANS.

REVISIONS				
ZONE	LTR	DESCRIPTION	DATE	APPROVED

D



D

C

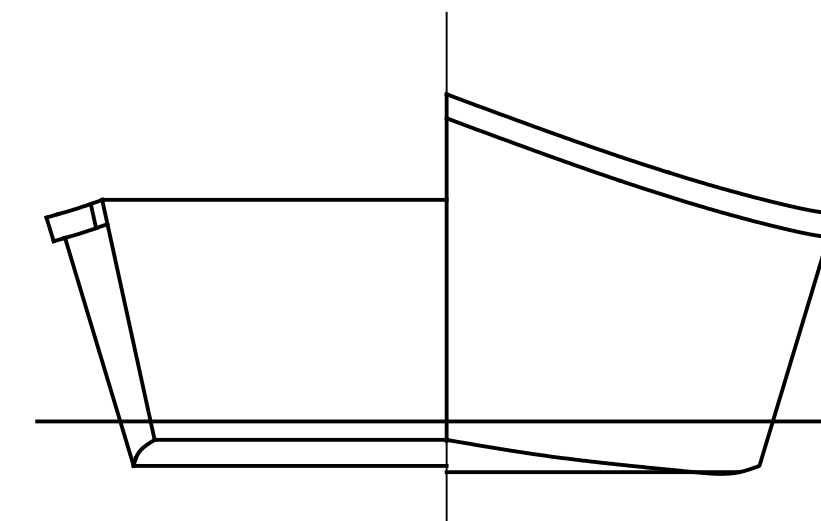
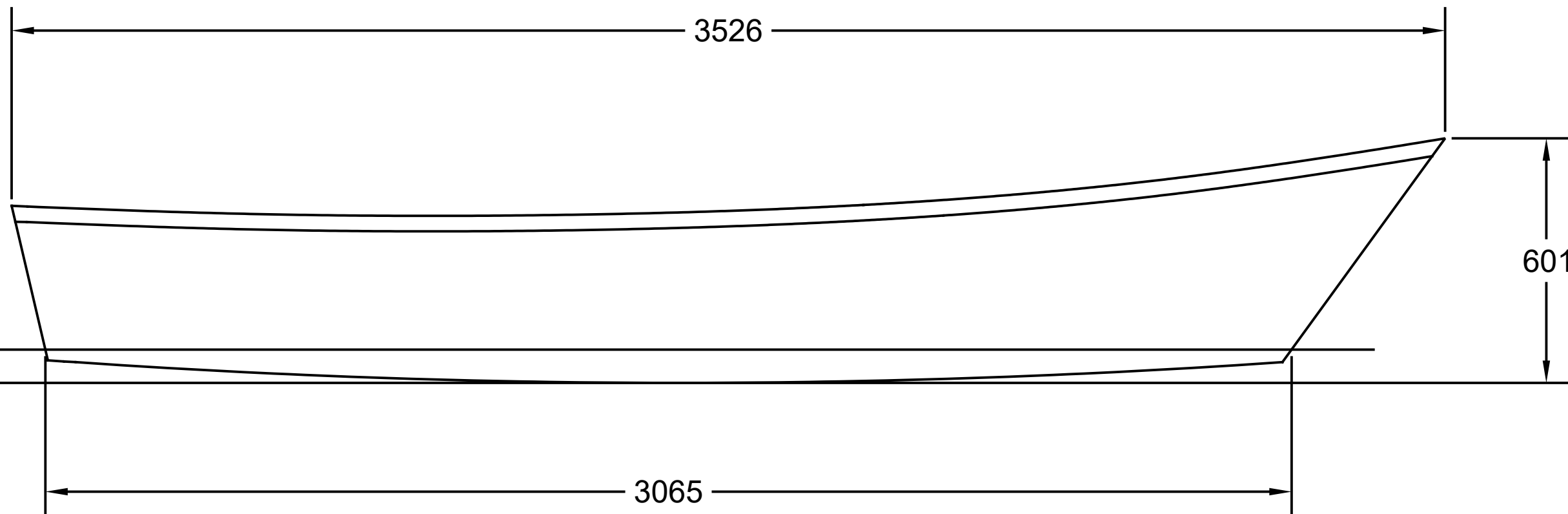
C

B

B

B


B



A

A

SPECIFICATIONS	
MAX. DISPLACEMENT	386 KG
HULL WEIGHT	48 KG
HP - MAXIMUM	7 1/2 HP (5.5 KW)
HP - RECOMMENDED	4 HP (3 KW)

 **Spira International, Inc.**
 Huntington Beach, California

CHAMPLAIN
 3.5 M ROW / POWER SKIFF

DRAWN BY: J. SPIRA	DATE: 12/15/18	DRAWING NO. CHAMM01
SCALE 1 / 12		SHEET OF

4

3

2

1

4

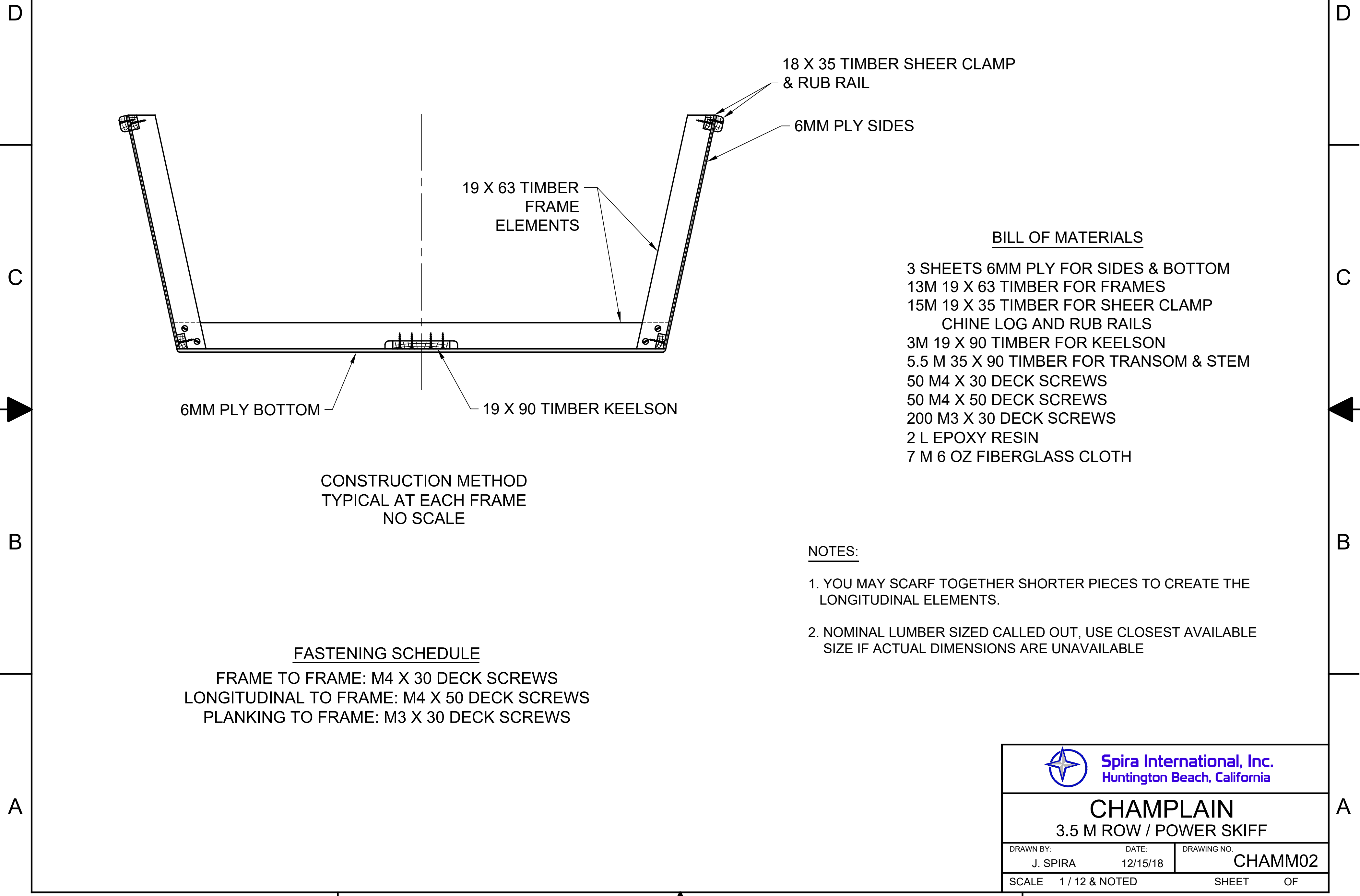
3

2

1

NOTICE
 THIS DRAWING CONTAINS A PROPRIETARY DESIGN ASSIGNED TO SPIRA INTERNATIONAL, INC. ALL RIGHTS TO DUPLICATE, TRANSFER OR USE ARE EXPRESSLY RESERVED BY SPIRA INTERNATIONAL. THE BUYER IS LICENSED TO BUILD ONE ASSEMBLY FROM THESE PLANS.

REVISIONS				
ZONE	LTR	DESCRIPTION	DATE	APPROVED



BILL OF MATERIALS

- 3 SHEETS 6MM PLY FOR SIDES & BOTTOM
- 13M 19 X 63 TIMBER FOR FRAMES
- 15M 19 X 35 TIMBER FOR SHEER CLAMP CHINE LOG AND RUB RAILS
- 3M 19 X 90 TIMBER FOR KEELSON
- 5.5 M 35 X 90 TIMBER FOR TRANSOM & STEM
- 50 M4 X 30 DECK SCREWS
- 50 M4 X 50 DECK SCREWS
- 200 M3 X 30 DECK SCREWS
- 2 L EPOXY RESIN
- 7 M 6 OZ FIBERGLASS CLOTH

NOTES:

1. YOU MAY SCARF TOGETHER SHORTER PIECES TO CREATE THE LONGITUDINAL ELEMENTS.
2. NOMINAL LUMBER SIZED CALLED OUT, USE CLOSEST AVAILABLE SIZE IF ACTUAL DIMENSIONS ARE UNAVAILABLE

FASTENING SCHEDULE

- FRAME TO FRAME: M4 X 30 DECK SCREWS
- LONGITUDINAL TO FRAME: M4 X 50 DECK SCREWS
- PLANKING TO FRAME: M3 X 30 DECK SCREWS



Spira International, Inc.
 Huntington Beach, California

CHAMPLAIN

3.5 M ROW / POWER SKIFF

DRAWN BY: J. SPIRA	DATE: 12/15/18	DRAWING NO. CHAMM02
-----------------------	-------------------	------------------------

SCALE 1 / 12 & NOTED SHEET OF

4

3

2

1