

4

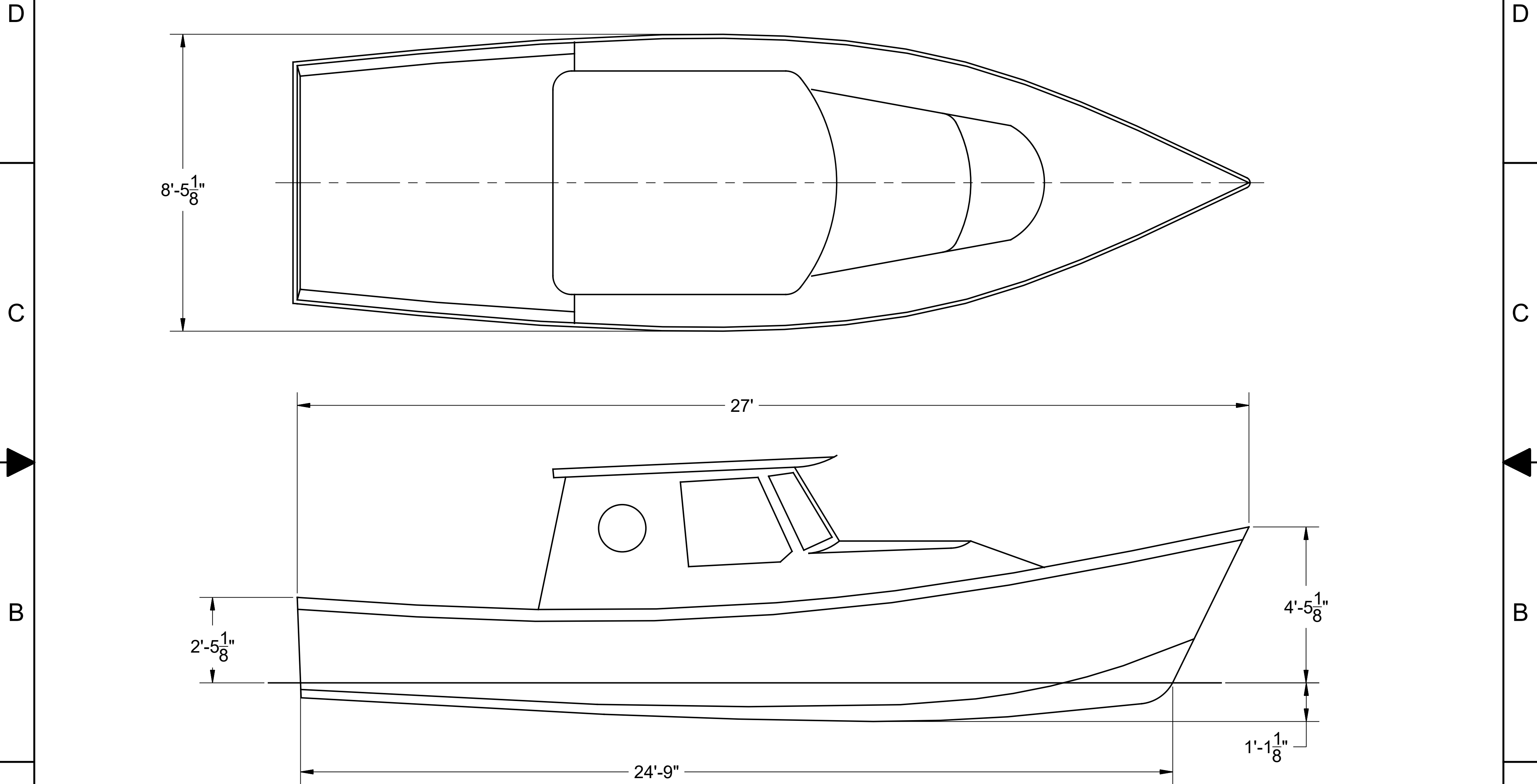
3

2


1

NOTICE
 THIS DRAWING CONTAINS A PROPRIETARY DESIGN ASSIGNED TO SPIRA INTERNATIONAL, INC. ALL RIGHTS TO DUPLICATE, TRANSFER OR USE ARE EXPRESSLY RESERVED BY SPIRA INTERNATIONAL. THE BUYER IS LICENSED TO BUILD ONE ASSEMBLY FROM THESE PLANS.

REVISIONS				
ZONE	LTR	DESCRIPTION	DATE	APPROVED
	A	ADDED SPECIFICATION SHEET	07/27/16	JJS



SPECIFICATIONS	
MAX. DISPLACEMENT	8600 LBS
HULL WEIGHT	2800 LBS
MAX. HP	200 HP
RECOMMENDED HP	40 - 75 HP

 **Spira International, Inc.**
 Huntington Beach, California

CANE RIVER
 27' SEMI-PLANING CRUISER

DRAWN BY: J. SPIRA	DATE: 08/30/10	DRAWING NO. CANE01
-----------------------	-------------------	-----------------------

SCALE 1/2" = 1' & NOTED SHEET OF

4

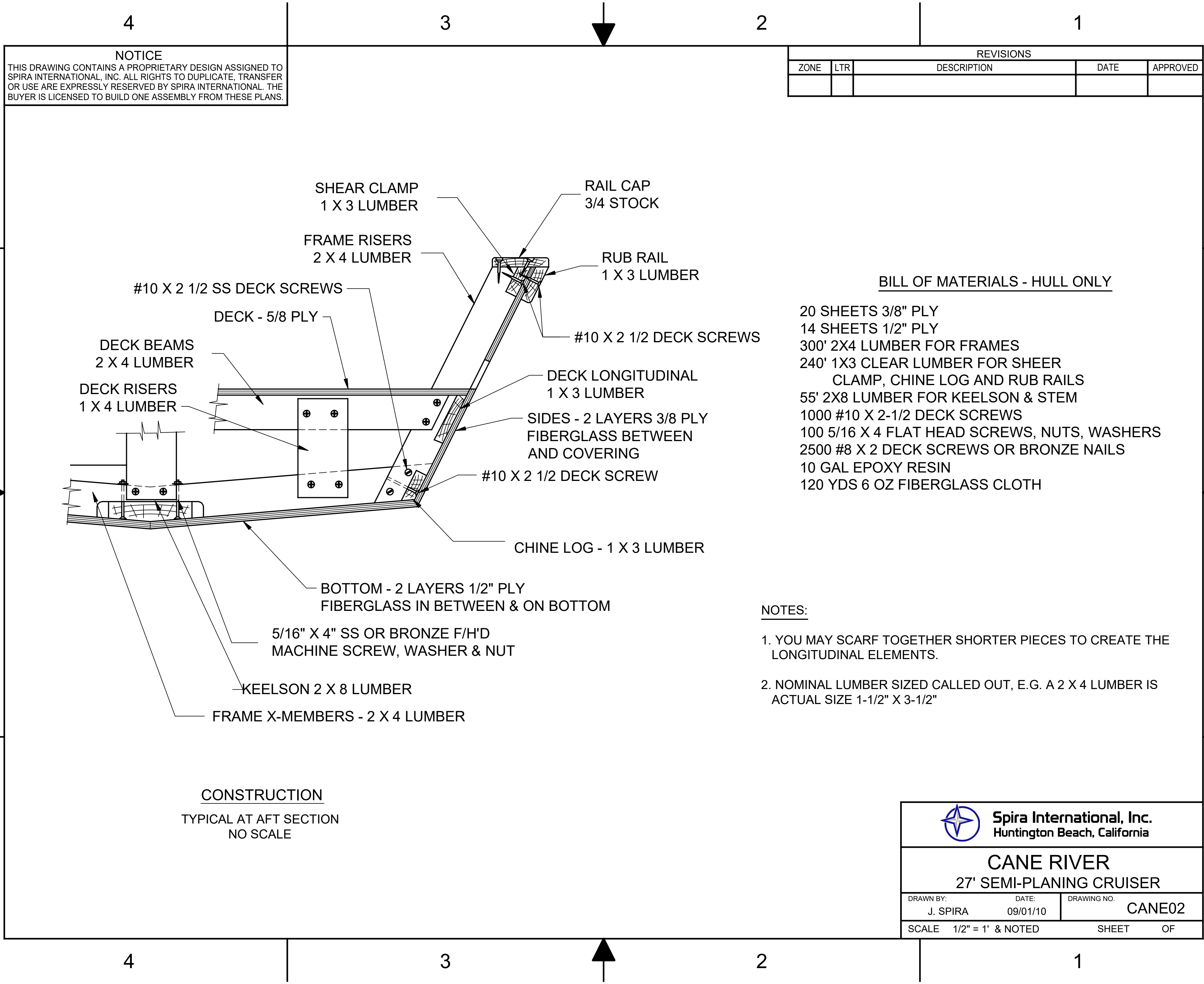
3

2

1

A

A



NOTICE
 THIS DRAWING CONTAINS A PROPRIETARY DESIGN ASSIGNED TO SPIRA INTERNATIONAL, INC. ALL RIGHTS TO DUPLICATE, TRANSFER OR USE ARE EXPRESSLY RESERVED BY SPIRA INTERNATIONAL. THE BUYER IS LICENSED TO BUILD ONE ASSEMBLY FROM THESE PLANS.

REVISIONS				
ZONE	LTR	DESCRIPTION	DATE	APPROVED


BILL OF MATERIALS - HULL ONLY

- 20 SHEETS 3/8" PLY
- 14 SHEETS 1/2" PLY
- 300' 2X4 LUMBER FOR FRAMES
- 240' 1X3 CLEAR LUMBER FOR SHEER CLAMP, CHINE LOG AND RUB RAILS
- 55' 2X8 LUMBER FOR KEELSON & STEM
- 1000 #10 X 2-1/2 DECK SCREWS
- 100 5/16 X 4 FLAT HEAD SCREWS, NUTS, WASHERS
- 2500 #8 X 2 DECK SCREWS OR BRONZE NAILS
- 10 GAL EPOXY RESIN
- 120 YDS 6 OZ FIBERGLASS CLOTH

NOTES:

1. YOU MAY SCARF TOGETHER SHORTER PIECES TO CREATE THE LONGITUDINAL ELEMENTS.
2. NOMINAL LUMBER SIZED CALLED OUT, E.G. A 2 X 4 LUMBER IS ACTUAL SIZE 1-1/2" X 3-1/2"

CONSTRUCTION
 TYPICAL AT AFT SECTION
 NO SCALE

 Spira International, Inc. Huntington Beach, California		
CANE RIVER 27' SEMI-PLANING CRUISER		
DRAWN BY:	DATE:	DRAWING NO.
J. SPIRA	09/01/10	CANE02
SCALE 1/2" = 1' & NOTED		SHEET OF