

4

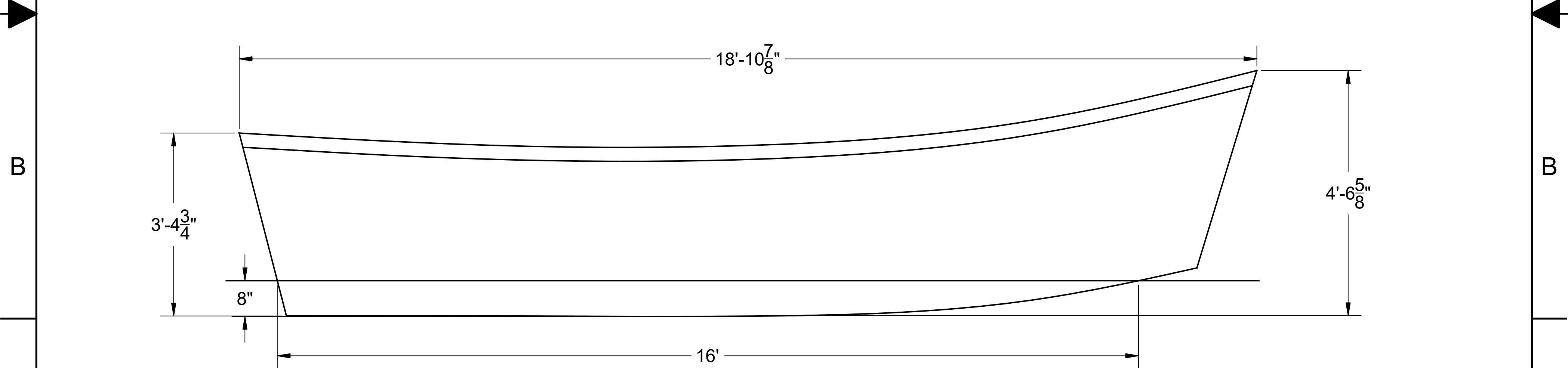
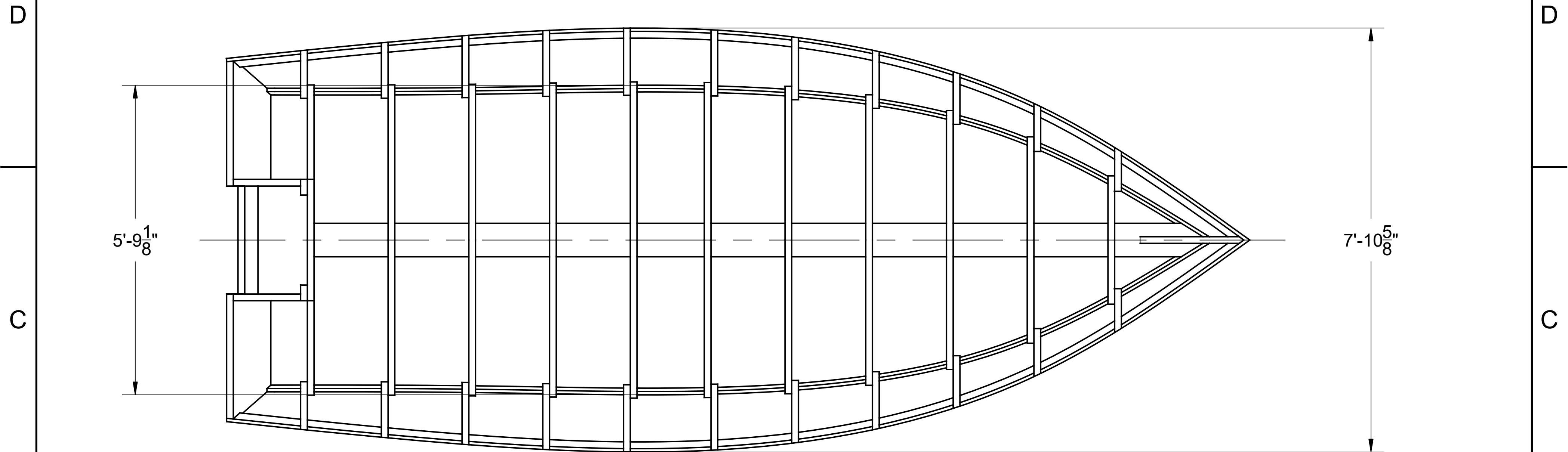
3

2


1

**NOTICE**  
 THIS DRAWING CONTAINS A PROPRIETARY DESIGN ASSIGNED TO SPIRA INTERNATIONAL, INC. ALL RIGHTS TO DUPLICATE, TRANSFER OR USE ARE EXPRESSLY RESERVED BY SPIRA INTERNATIONAL. THE BUYER IS LICENSED TO BUILD ONE ASSEMBLY FROM THESE PLANS.

REVISIONS				
ZONE	LTR	DESCRIPTION	DATE	APPROVED
	A	ADDED WATERLINE AND SPECIFICATIONS	11/14/15	JJS



SPECIFICATIONS	
MAX. DISPLACEMENT	4450 LBS
HULL WEIGHT	1440 LBS
HP <sub>MAX</sub> (20" O/B, REMOTE)	120 HP
HP RECOMMENDED	50-75 HP

 **Spira International, Inc.**  
 Huntington Beach, California

**ANACAPA**  
 19' OFFSHORE PACIFIC POWER DORY

DRAWN BY: J. SPIRA	DATE: 07/25/10	DRAWING NO. ANAC01
-----------------------	-------------------	-----------------------

SCALE 3/4" = 1' SHEET OF

4

3

2

1

4

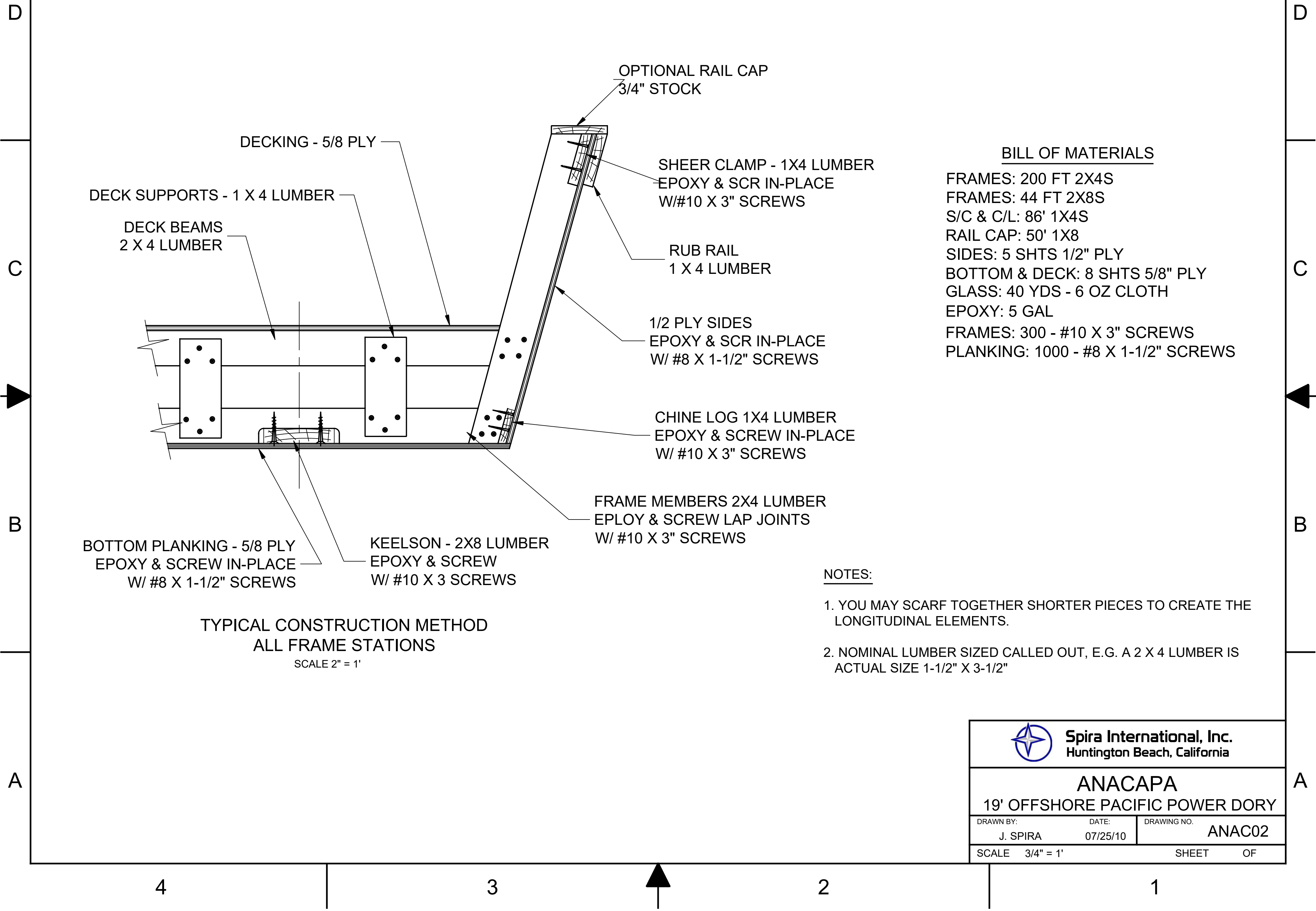
3

2

1

**NOTICE**  
 THIS DRAWING CONTAINS A PROPRIETARY DESIGN ASSIGNED TO SPIRA INTERNATIONAL, INC. ALL RIGHTS TO DUPLICATE, TRANSFER OR USE ARE EXPRESSLY RESERVED BY SPIRA INTERNATIONAL. THE BUYER IS LICENSED TO BUILD ONE ASSEMBLY FROM THESE PLANS.

REVISIONS				
ZONE	LTR	DESCRIPTION	DATE	APPROVED




**BILL OF MATERIALS**

- FRAMES: 200 FT 2X4S
- FRAMES: 44 FT 2X8S
- S/C & C/L: 86' 1X4S
- RAIL CAP: 50' 1X8
- SIDES: 5 SHTS 1/2" PLY
- BOTTOM & DECK: 8 SHTS 5/8" PLY
- GLASS: 40 YDS - 6 OZ CLOTH
- EPOXY: 5 GAL
- FRAMES: 300 - #10 X 3" SCREWS
- PLANKING: 1000 - #8 X 1-1/2" SCREWS

**TYPICAL CONSTRUCTION METHOD**  
**ALL FRAME STATIONS**  
 SCALE 2" = 1'

**NOTES:**

1. YOU MAY SCARF TOGETHER SHORTER PIECES TO CREATE THE LONGITUDINAL ELEMENTS.
2. NOMINAL LUMBER SIZED CALLED OUT, E.G. A 2 X 4 LUMBER IS ACTUAL SIZE 1-1/2" X 3-1/2"

 <b>Spira International, Inc.</b> Huntington Beach, California		
<b>ANACAPA</b> 19' OFFSHORE PACIFIC POWER DORY		
DRAWN BY:	DATE:	DRAWING NO.
J. SPIRA	07/25/10	ANAC02
SCALE 3/4" = 1'		SHEET OF