

4

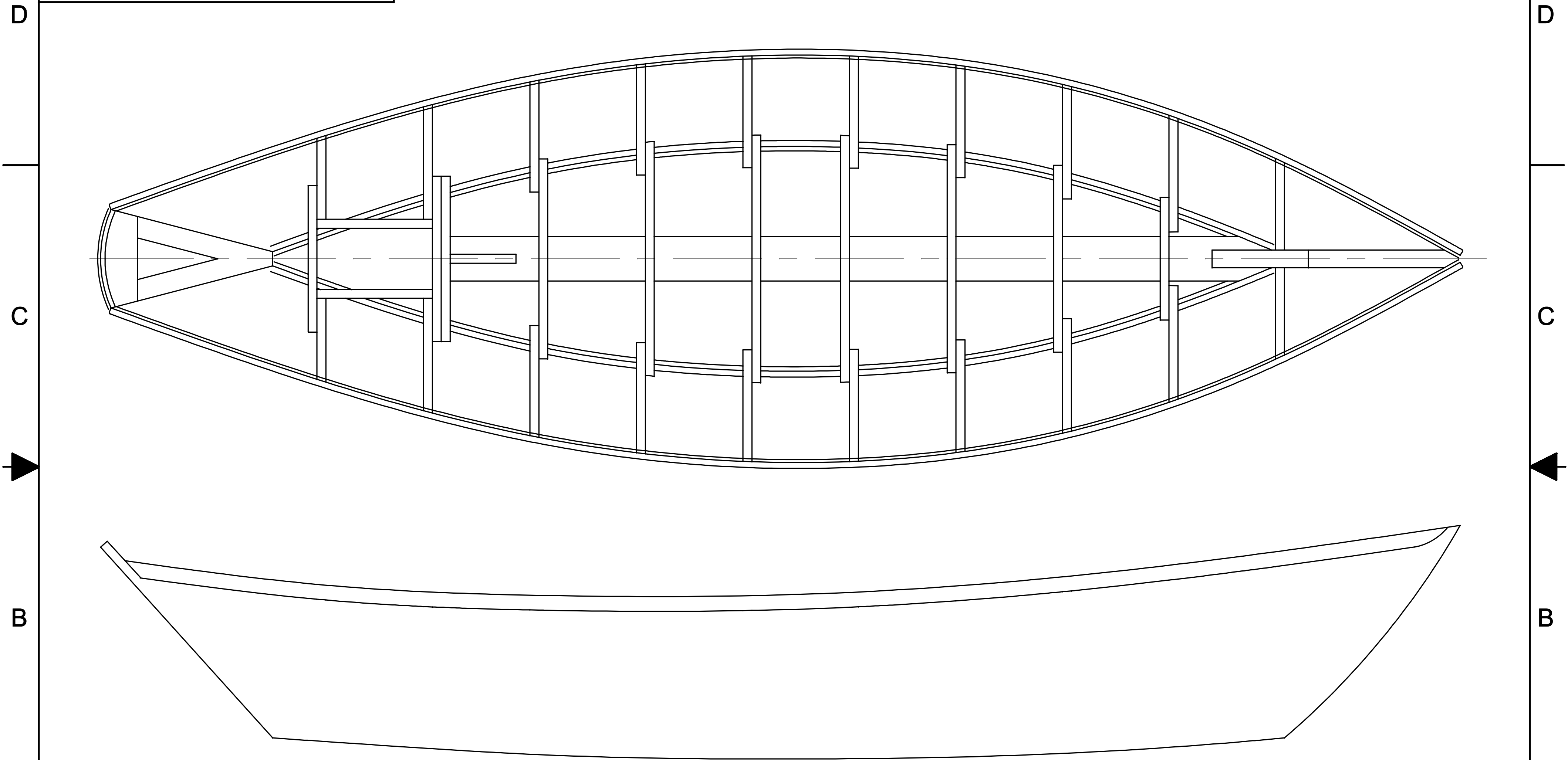
3

2

1

NOTICE
 THIS DRAWING CONTAINS A PROPRIETARY DESIGN ASSIGNED TO SPIRA INTERNATIONAL, INC. ALL RIGHTS TO DUPLICATE, TRANSFER OR SELL THIS DESIGN ARE EXPRESSLY RESERVED. THE BUYER IS LICENSED TO BUILD ONE ASSEMBLY FROM THESE PLANS.

REVISIONS				
ZONE	LTR	DESCRIPTION	DATE	APPROVED
	A	REVISED AND UPDATED	11/19/10	JJS



GENERAL DIMENSIONS	
LENGTH OVER ALL	5.8M
LENGTH AT WATERLINE	4.3M
BEAM	2.8M
DRAFT	0.1M
FREEBOARD MAX	0.9M
FREEBOARD MIN	0.5M

Spira International, Inc.
Huntington Beach, California

ALASKAN
 5.8M ROW/POWER/SAIL DORY

DRAWN BY: J. SPIRA	DATE: 06/29/09	DRAWING NO. ALASM01
SCALE 1/12 & NOTED		SHEET OF

A

A

4

3

2

1

4

3

2

1

NOTICE
 THIS DRAWING CONTAINS A PROPRIETARY DESIGN ASSIGNED TO SPIRA INTERNATIONAL, INC. ALL RIGHTS TO DUPLICATE, TRANSFER OR SELL THIS DESIGN ARE EXPRESSLY RESERVED. THE BUYER IS LICENSED TO BUILD ONE ASSEMBLY FROM THESE PLANS.

REVISIONS				
ZONE	LTR	DESCRIPTION	DATE	APPROVED
	A	REVISED AND UPDATED	11/19/10	JJS

BILL OF MATERIALS - HULL ONLY

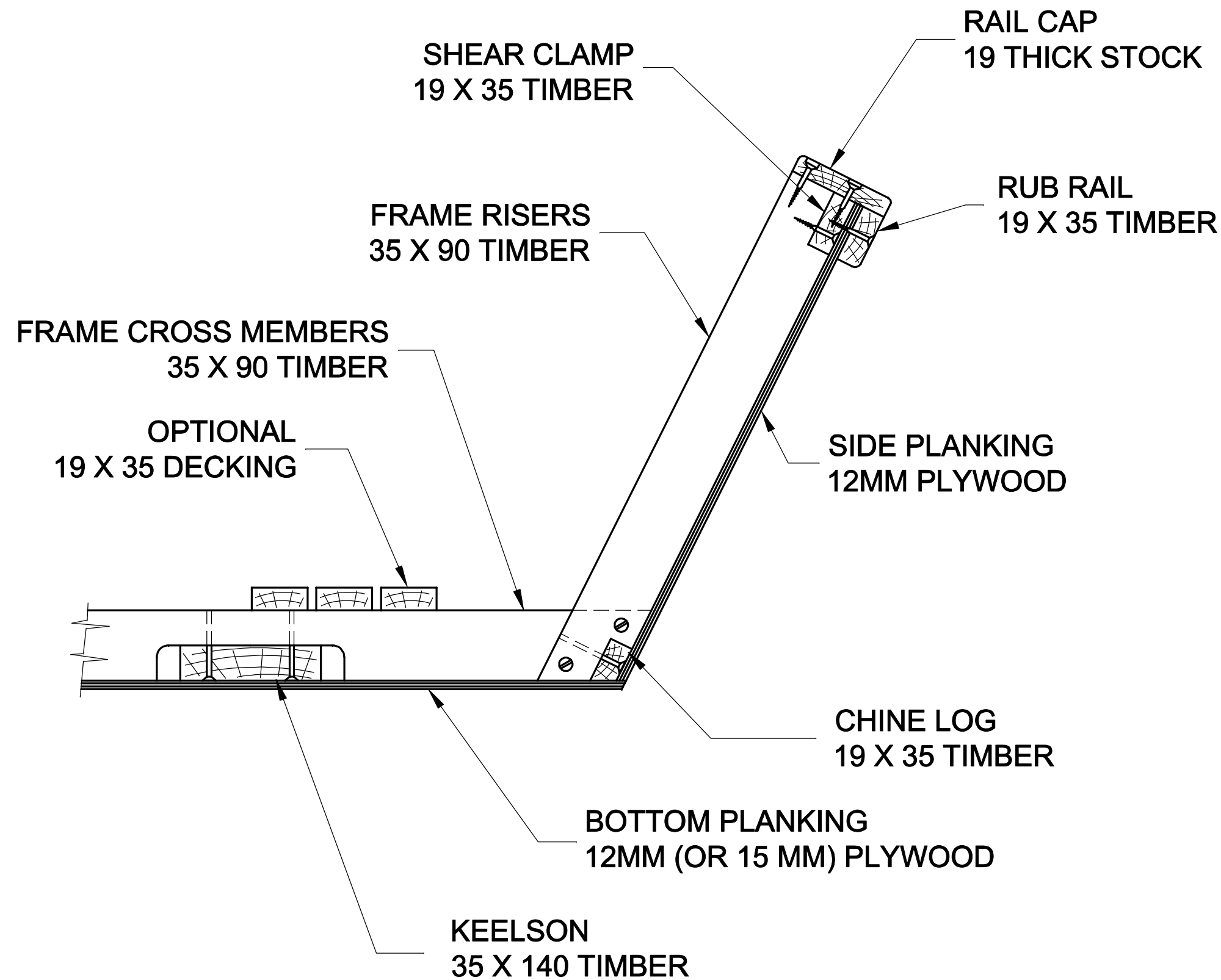
- 8 SHEETS 12MM PLY
- 1/2 SHEET 19MM PLY
- 30M 35 X 90 TIMBER FOR FRAMES
- 28M 19 X 35 TIMBER FOR SHEER CLAMP & CHINE LOG
- 6M 35 X 140 TIMBER FOR KEELSON
- 2M 35 X 190 TIMBER FOR STEM
- 42M 19 X 35 TIMBER FOR DECKING
 (OPTIONAL DECKING 2 SHT 12MM PLYWOOD)
- 50 - M5 X 75 DECK SCREWS
- 250 - M4 X 60 DECK SCREWS
- 500 - M3 X 30 DECK SCREWS
- 12L EPOXY RESIN
- 20M 6 OZ FIBERGLASS CLOTH

FASTENING SCHEDULE

- KEELSON TO FRAMES: M5 X 75 DECK SCREWS
- FRAMES TO FRAMES: M4 X 60 DECK SCREWS
- LONGITUDINALS: M4 X 60 DECK SCREWS
- PLY TO FRAMES: M3 X 60 DECK SCREWS

NOTES:

- 1. YOU MAY SCARF TOGETHER SHORTER PIECES TO CREATE THE LONGITUDINAL ELEMENTS.



CONSTRUCTION METHOD
 TYPICAL AT EACH FRAME
 NOT TO SCALE

Spira International, Inc. <i>Huntington Beach, California</i>		
ALASKAN CONSTRUCTION DETAILS		
DRAWN BY: J. SPIRA	DATE: 05/31/09	DRAWING NO. ALASM02
SCALE 1/2 & NOTED	SHEET OF	

4

3

2

1