

4

3

2

1

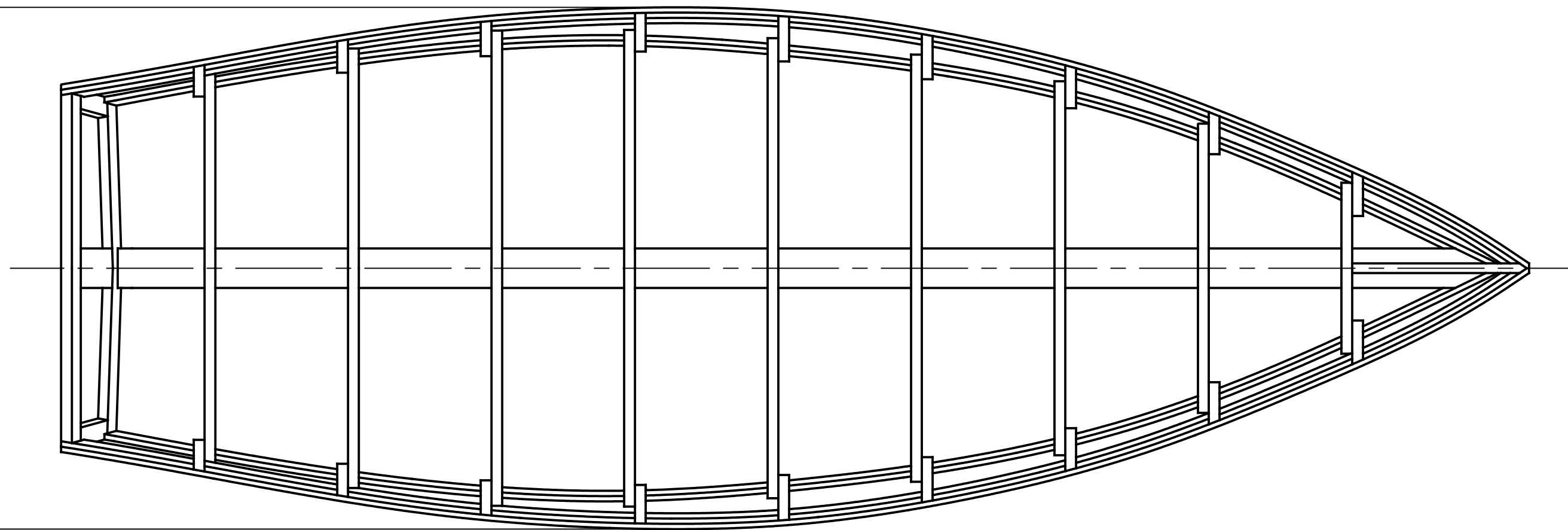
NOTICE
 THIS DRAWING CONTAINS A PROPRIETARY DESIGN ASSIGNED TO SPIRA INTERNATIONAL, INC. ALL RIGHTS TO DUPLICATE, TRANSFER OR USE ARE EXPRESSLY RESERVED BY SPIRA INTERNATIONAL. THE BUYER IS LICENSED TO BUILD ONE ASSEMBLY FROM THESE PLANS.

REVISIONS				
ZONE	LTR	DESCRIPTION	DATE	APPROVED
	A	ADDED SPEC TABLE & NEW FORMAT	09/16/14	JJS

D

D

6'- $\frac{3}{4}$ "
 (1.83 M)



C

C

B

B

17'- $\frac{1}{8}$ "
 (5.1 M)

1'- $6\frac{1}{4}$ "
 (0.46 M)

2'- $2\frac{1}{4}$ "
 (0.67 M)

15'-8"
 (4.8 M)

B

B

A

A

SPECIFICATIONS

MAX. DISPLACEMENT	2600 LBS [1180 KG]
HULL WEIGHT	680 LBS [310 KG]
MAX. HP	65 HP
RECOMMENDED HP	15 HP



Spira International, Inc.
 Huntington Beach, California

ABLEMARLE
 17' POWER SKIPJACK

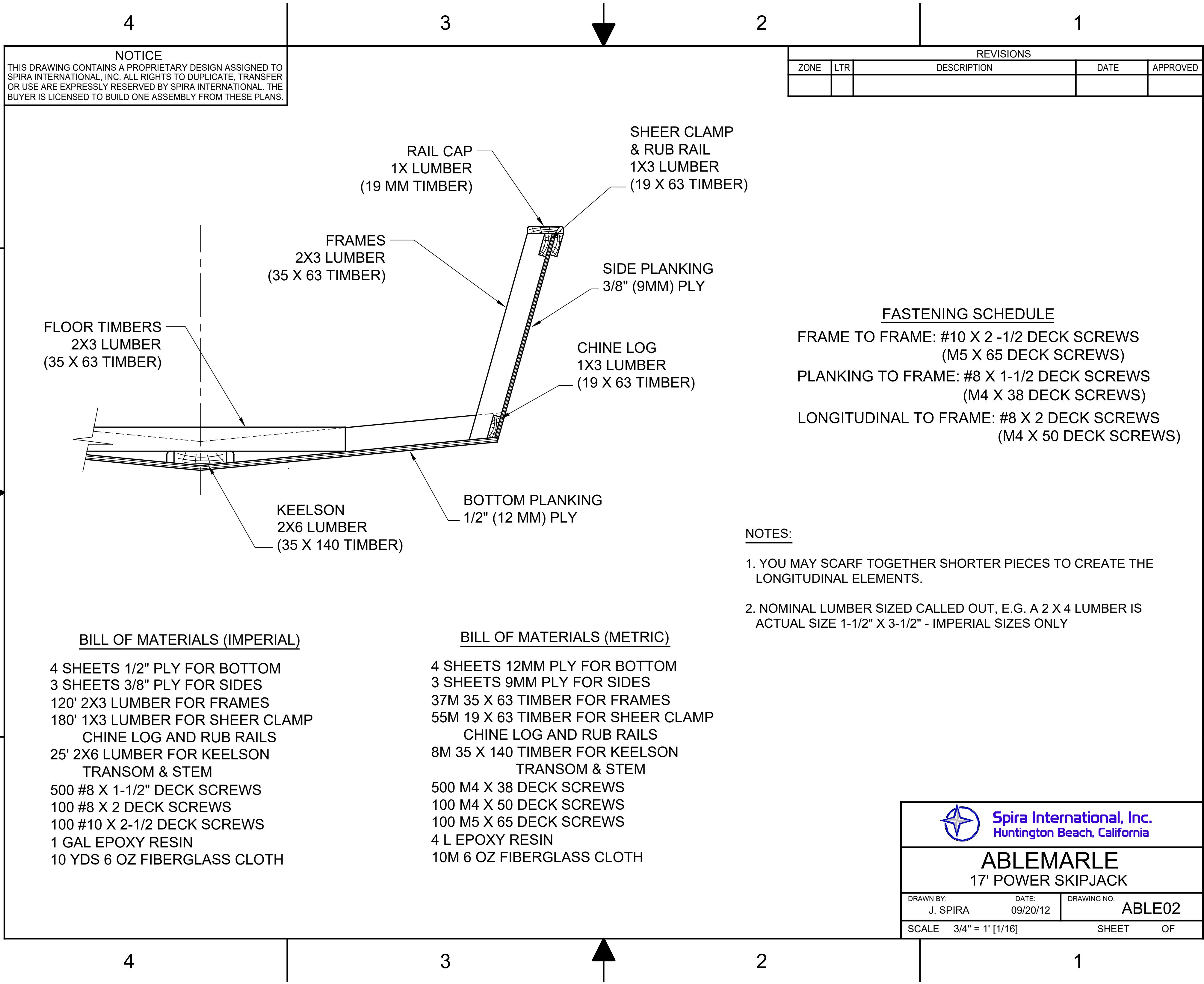
DRAWN BY: J. SPIRA	DATE: 09/20/12	DRAWING NO. ABLE01
SCALE 3/4" = 1' [1/16]		SHEET OF

4

3

2

1



NOTICE
 THIS DRAWING CONTAINS A PROPRIETARY DESIGN ASSIGNED TO SPIRA INTERNATIONAL, INC. ALL RIGHTS TO DUPLICATE, TRANSFER OR USE ARE EXPRESSLY RESERVED BY SPIRA INTERNATIONAL. THE BUYER IS LICENSED TO BUILD ONE ASSEMBLY FROM THESE PLANS.

REVISIONS				
ZONE	LTR	DESCRIPTION	DATE	APPROVED

FASTENING SCHEDULE
 FRAME TO FRAME: #10 X 2 -1/2 DECK SCREWS
 (M5 X 65 DECK SCREWS)
 PLANKING TO FRAME: #8 X 1-1/2 DECK SCREWS
 (M4 X 38 DECK SCREWS)
 LONGITUDINAL TO FRAME: #8 X 2 DECK SCREWS
 (M4 X 50 DECK SCREWS)

- NOTES:**
1. YOU MAY SCARF TOGETHER SHORTER PIECES TO CREATE THE LONGITUDINAL ELEMENTS.
 2. NOMINAL LUMBER SIZED CALLED OUT, E.G. A 2 X 4 LUMBER IS ACTUAL SIZE 1-1/2" X 3-1/2" - IMPERIAL SIZES ONLY

BILL OF MATERIALS (IMPERIAL)

- 4 SHEETS 1/2" PLY FOR BOTTOM
- 3 SHEETS 3/8" PLY FOR SIDES
- 120' 2X3 LUMBER FOR FRAMES
- 180' 1X3 LUMBER FOR SHEER CLAMP CHINE LOG AND RUB RAILS
- 25' 2X6 LUMBER FOR KEELSON TRANSOM & STEM
- 500 #8 X 1-1/2" DECK SCREWS
- 100 #8 X 2 DECK SCREWS
- 100 #10 X 2-1/2 DECK SCREWS
- 1 GAL EPOXY RESIN
- 10 YDS 6 OZ FIBERGLASS CLOTH

BILL OF MATERIALS (METRIC)

- 4 SHEETS 12MM PLY FOR BOTTOM
- 3 SHEETS 9MM PLY FOR SIDES
- 37M 35 X 63 TIMBER FOR FRAMES
- 55M 19 X 63 TIMBER FOR SHEER CLAMP CHINE LOG AND RUB RAILS
- 8M 35 X 140 TIMBER FOR KEELSON TRANSOM & STEM
- 500 M4 X 38 DECK SCREWS
- 100 M4 X 50 DECK SCREWS
- 100 M5 X 65 DECK SCREWS
- 4 L EPOXY RESIN
- 10M 6 OZ FIBERGLASS CLOTH

 **Spira International, Inc.**
 Huntington Beach, California

ABLEMARLE
 17' POWER SKIPJACK

DRAWN BY: J. SPIRA	DATE: 09/20/12	DRAWING NO. ABLE02
SCALE 3/4" = 1' [1/16]		SHEET OF