

4

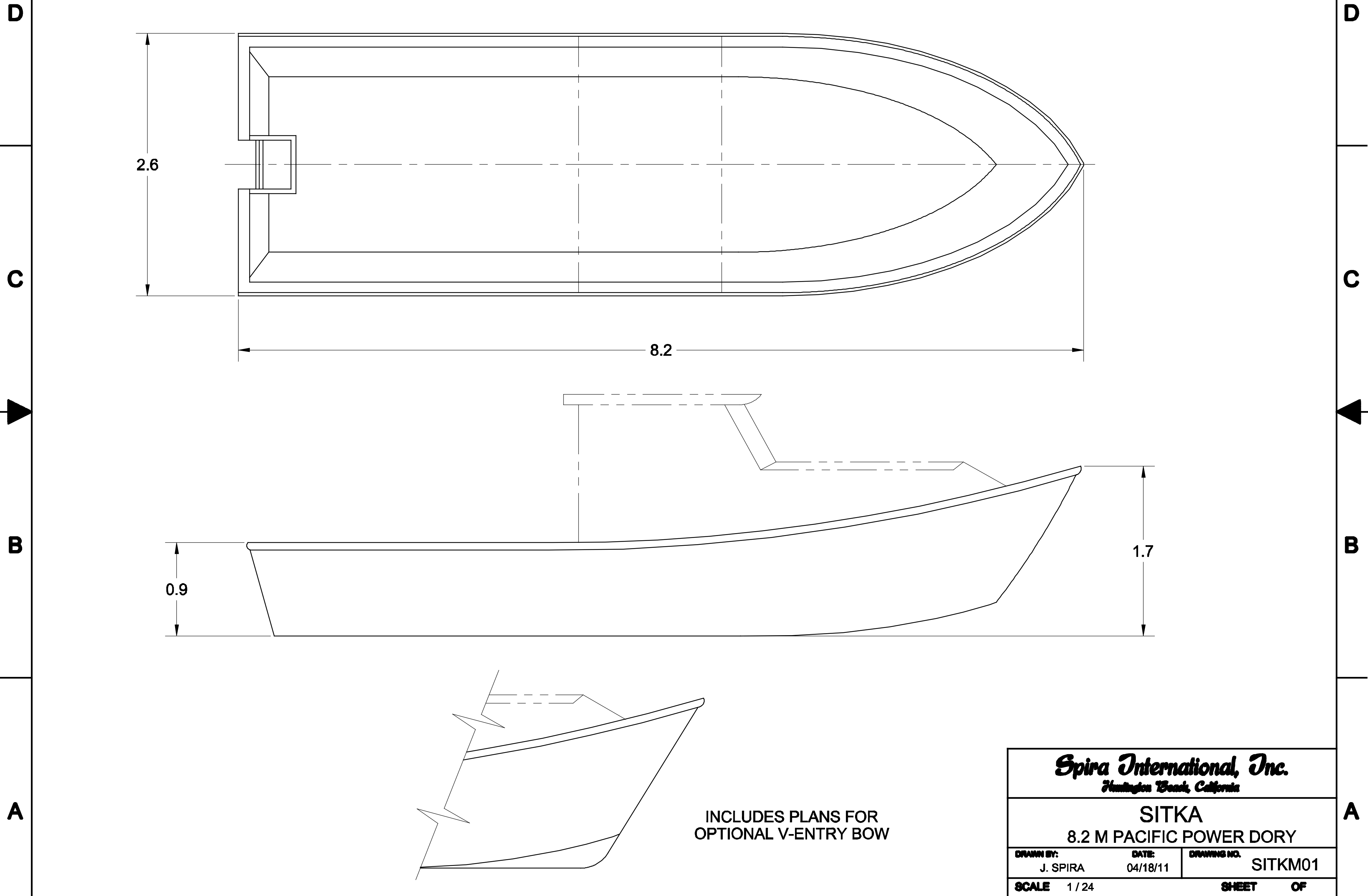
3

2

1

NOTICE
 THIS DRAWING CONTAINS A PROPRIETARY DESIGN ASSIGNED TO SPIRA INTERNATIONAL, INC. ALL RIGHTS TO DUPLICATE, TRANSFER OR USE ARE EXPRESSLY RESERVED BY SPIRA INTERNATIONAL. THE BUYER IS LICENSED TO BUILD ONE ASSEMBLY FROM THESE PLANS.

REVISIONS				
ZONE	LTR	DESCRIPTION	DATE	APPROVED



INCLUDES PLANS FOR
 OPTIONAL V-ENTRY BOW

Spira International, Inc.
Huntington Beach, California

SITKA
 8.2 M PACIFIC POWER DORY

DRAWN BY: J. SPIRA	DATE: 04/18/11	DRAWING NO.: SITKM01
SCALE 1 / 24	SHEET OF	

4

3

2

1

A

A

4

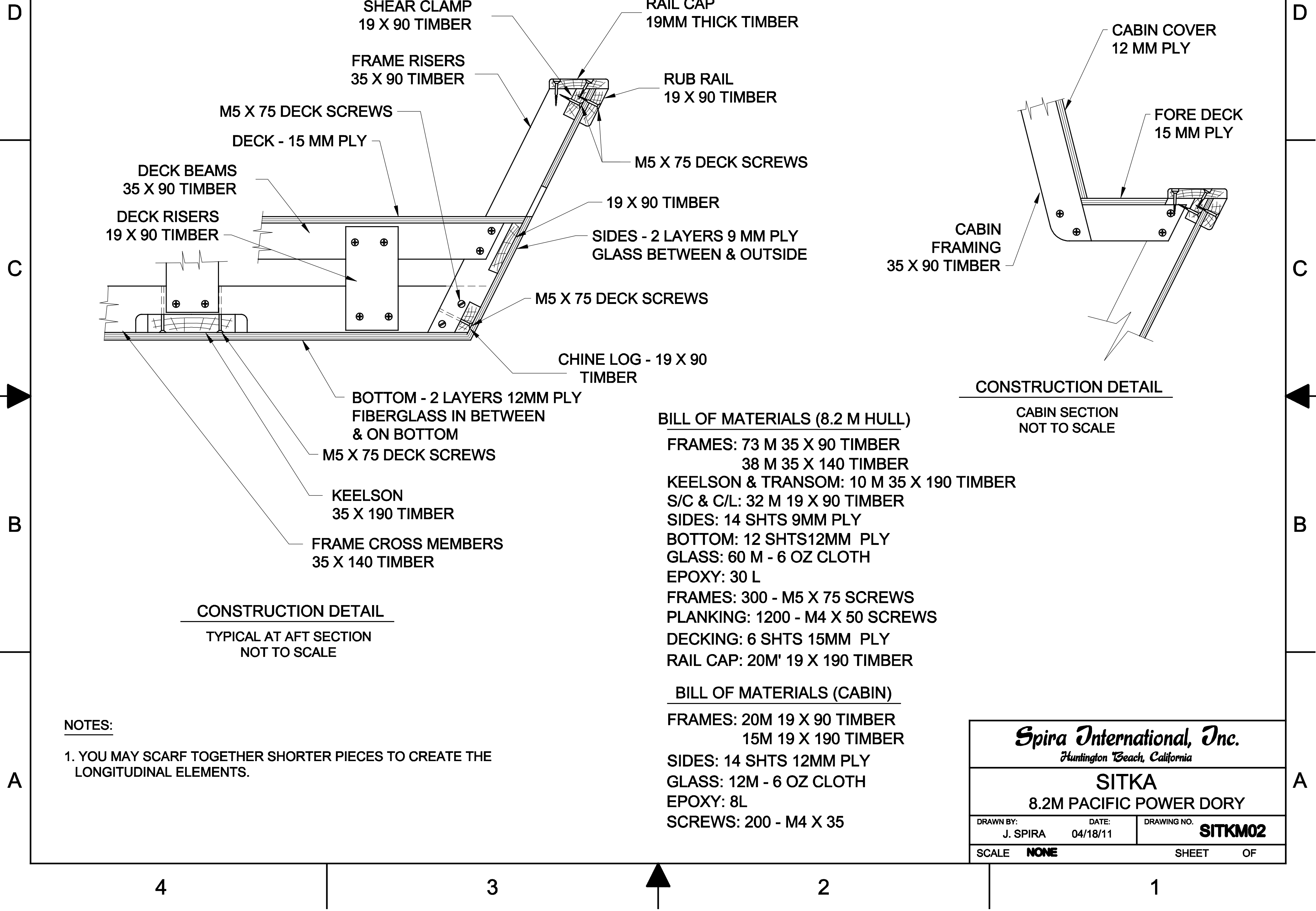
3

2

1

NOTICE
 THIS DRAWING CONTAINS A PROPRIETARY DESIGN ASSIGNED TO SPIRA INTERNATIONAL, INC. ALL RIGHTS TO DUPLICATE, TRANSFER OR USE ARE EXPRESSLY RESERVED BY SPIRA INTERNATIONAL. THE BUYER IS LICENSED TO BUILD ONE ASSEMBLY FROM THESE PLANS.

REVISIONS				
ZONE	LTR	DESCRIPTION	DATE	APPROVED



CONSTRUCTION DETAIL
 TYPICAL AT AFT SECTION
 NOT TO SCALE

CONSTRUCTION DETAIL
 CABIN SECTION
 NOT TO SCALE

BILL OF MATERIALS (8.2 M HULL)

- FRAMES: 73 M 35 X 90 TIMBER
 38 M 35 X 140 TIMBER
- KEELSON & TRANSOM: 10 M 35 X 190 TIMBER
- S/C & C/L: 32 M 19 X 90 TIMBER
- SIDES: 14 SHTS 9MM PLY
- BOTTOM: 12 SHTS 12MM PLY
- GLASS: 60 M - 6 OZ CLOTH
- EPOXY: 30 L
- FRAMES: 300 - M5 X 75 SCREWS
- PLANKING: 1200 - M4 X 50 SCREWS
- DECKING: 6 SHTS 15MM PLY
- RAIL CAP: 20M' 19 X 190 TIMBER

BILL OF MATERIALS (CABIN)

- FRAMES: 20M 19 X 90 TIMBER
 15M 19 X 190 TIMBER
- SIDES: 14 SHTS 12MM PLY
- GLASS: 12M - 6 OZ CLOTH
- EPOXY: 8L
- SCREWS: 200 - M4 X 35

NOTES:

1. YOU MAY SCARF TOGETHER SHORTER PIECES TO CREATE THE LONGITUDINAL ELEMENTS.

Spira International, Inc.
Huntington Beach, California

SITKA
 8.2M PACIFIC POWER DORY

DRAWN BY: J. SPIRA	DATE: 04/18/11	DRAWING NO. SITKM02
SCALE NONE		SHEET OF