

4

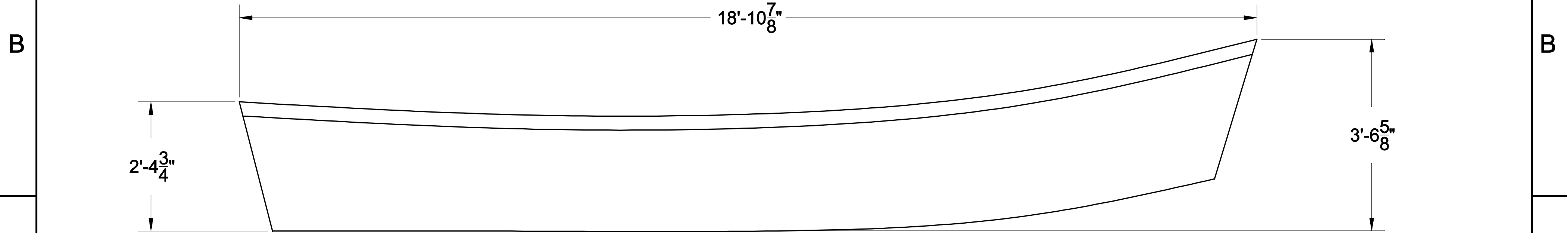
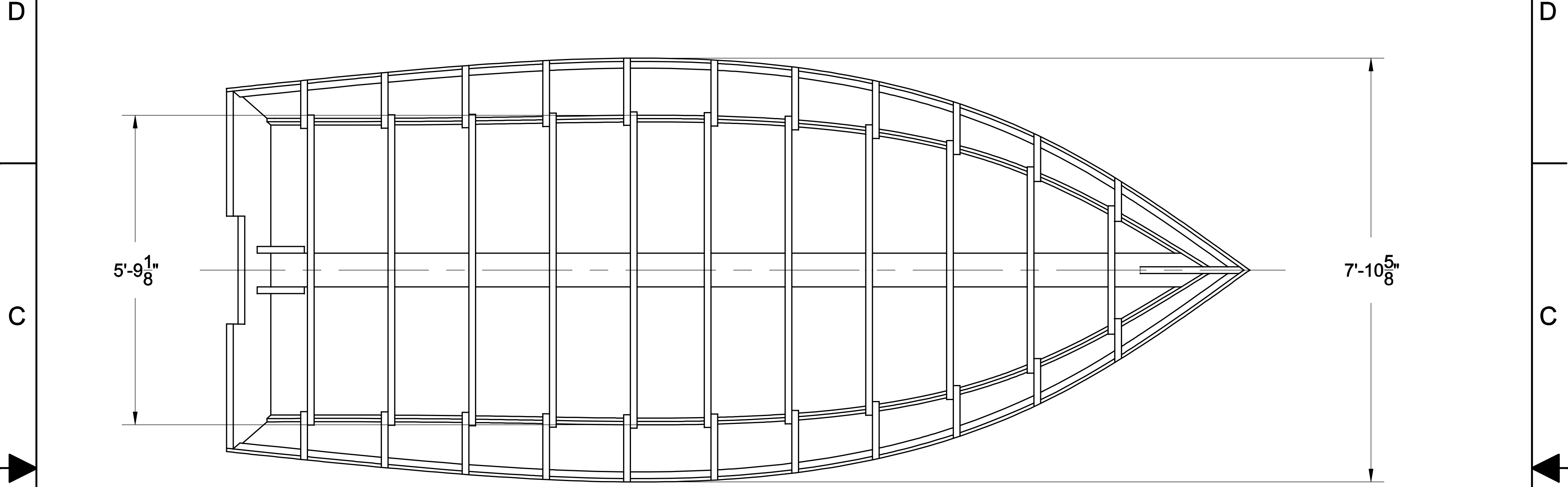
3

2

1

NOTICE
 THIS DRAWING CONTAINS A PROPRIETARY DESIGN ASSIGNED TO SPIRA INTERNATIONAL, INC. ALL RIGHTS TO DUPLICATE, TRANSFER OR SELL THIS DESIGN ARE EXPRESSLY RESERVED. THE BUYER IS LICENSED TO BUILD ONE ASSEMBLY FROM THESE PLANS.

REVISIONS				
ZONE	LTR	DESCRIPTION	DATE	APPROVED



Spira International, Inc.
Huntington Beach, California

ALBION
19' PACIFIC POWER DORY

DRAWN BY: J. SPIRA	DATE: 06/15/09	DRAWING NO. ALB101
SCALE 3/4" = 1'		SHEET OF

4

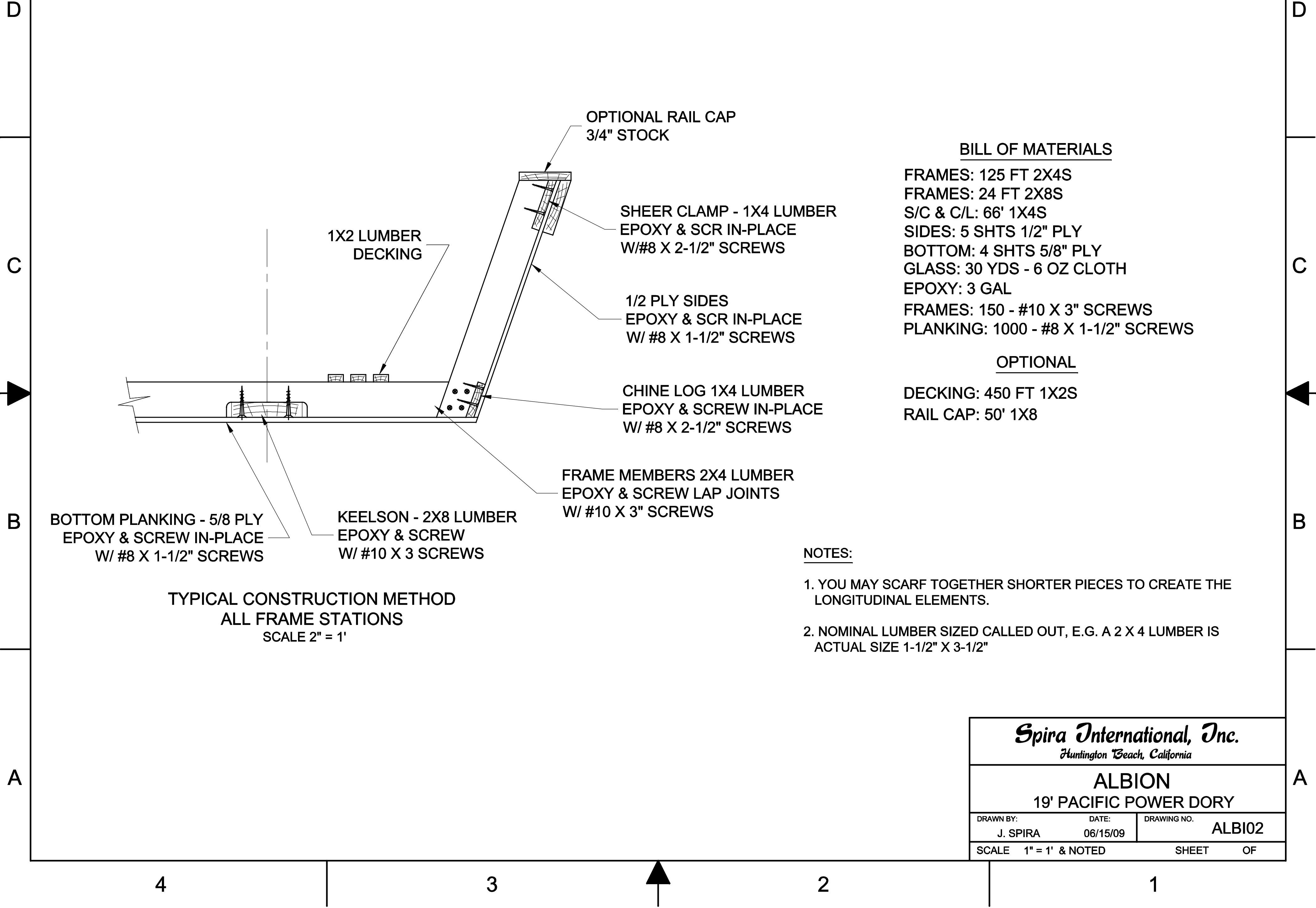
3

2

1

NOTICE
 THIS DRAWING CONTAINS A PROPRIETARY DESIGN ASSIGNED TO SPIRA INTERNATIONAL, INC. ALL RIGHTS TO DUPLICATE, TRANSFER OR SELL THIS DESIGN ARE EXPRESSLY RESERVED. THE BUYER IS LICENSED TO BUILD ONE ASSEMBLY FROM THESE PLANS.

REVISIONS				
ZONE	LTR	DESCRIPTION	DATE	APPROVED
	B	ADDED NOTES	08/17/10	JJS



BILL OF MATERIALS

- FRAMES: 125 FT 2X4S
- FRAMES: 24 FT 2X8S
- S/C & C/L: 66' 1X4S
- SIDES: 5 SHTS 1/2" PLY
- BOTTOM: 4 SHTS 5/8" PLY
- GLASS: 30 YDS - 6 OZ CLOTH
- EPOXY: 3 GAL
- FRAMES: 150 - #10 X 3" SCREWS
- PLANKING: 1000 - #8 X 1-1/2" SCREWS

OPTIONAL

- DECKING: 450 FT 1X2S
- RAIL CAP: 50' 1X8

NOTES:

1. YOU MAY SCARF TOGETHER SHORTER PIECES TO CREATE THE LONGITUDINAL ELEMENTS.
2. NOMINAL LUMBER SIZED CALLED OUT, E.G. A 2 X 4 LUMBER IS ACTUAL SIZE 1-1/2" X 3-1/2"

Spira International, Inc.
 Huntington Beach, California

ALBION
 19' PACIFIC POWER DORY

DRAWN BY: J. SPIRA	DATE: 06/15/09	DRAWING NO. ALB102
SCALE 1" = 1' & NOTED		SHEET OF